

OVER VIEW

EN .V6.2

SIBU | DESIGN
we decorate.

NA

non-adhesive

SA

strongly adhesive

FR

flame-retardant version
available on request

PRD

digital printing possible

PRS

screen printing possible

PR+

digital/screen printing possible

PR+*

digital/screen printing possible
Prior to printing a corona or plasma
treatment has to be carried out.
By request available in pre-treated version.

PRS*

screen printing possible
Prior to printing a corona or plasma
treatment has to be carried out.
By request available in pre-treated version.

■■■■

wet room suitability

■■■■□

limited suitability for wet rooms

AR

abrasion-resistant

AR+

scratch-resistant

+ ▼

entire panel length not shown
in image

LEATHER-LINE (LL) 13
SIBUGLAS (SG) 31
WOODLINE (WL) 47
DECO-LINE (DM) 55
MULTISTYLE (MS) 89
STRUCTURE-LINE (SL) 97
ACRYLIC-LINE (AC) 107
TRANSLUCENT-LINE (TL) 111
PUNCH-LINE / 3D (PL/PL3D) 115
ANTIGRAV 123

LEGENDE 137

PRODUCT CHARACTERISTICS 138
EXTRA EQUIPMENT 140
PROCESSING 141
ACCESSORIES 142

STORAGE / TRANSPORT GENERAL 143

CLEANING / DISPOSAL GENERAL 143

PROCESSING INSTRUCTIONS GENERAL 144

PROCESSING INSTRUCTIONS SIBUGLAS 146

GLUED AND PRESSED ON ABSORBENT WOOD BASE SHEETS 146
BONDED ONTO COATED WOOD BASE SHEETS INCLUDING EDGES AND MILLING 149
GLUED AND PRESSED ON ABSORBENT WOOD BASE SHEETS 150

PROCESSING INSTRUCTIONS ANTIGRAV 152

SIBU | DESIGN
we decorate.

Here we could tell you about ...

- our over 35 years of experience that helped us becoming the market leader
- our wide product portfolio with more than 300 storing designs
- our short delivery time and just-in-time projects
- our high standards in quality and processing.

Or as we, as a design sheet manufacturer in green Upper Austria, focus on lastingness using 100% PVC-free material. However, this is what you assume anyway, and from our point of view - rightly!

The SIBU designer team gets inspired by fashion, architecture, furniture, automobiles and sport, perceives trends and works out concepts for individual demands.

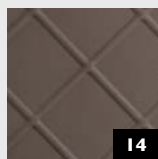
Precise. Innovative. Stylish.

If you also believe in these values, we should become acquainted!

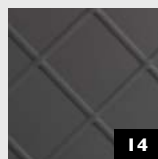
LEATHER-LINE



LL CORD
Stony Ground



LL CORD
Dove Tale



LL CORD
Charcoal Light



LL ROMBO 40
Bianco matt



LL ROMBO 40
Creme



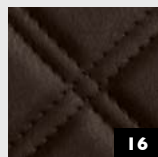
LL ROMBO 40
Nero matt



LL ROMBO 85
Bianco matt



LL ROMBO 85
Creme



LL ROMBO 85
Mocca matt



LL ROMBO 85
Nero matt



CR CRISTAL
ROMBO 85 Bianco
matt/Silver



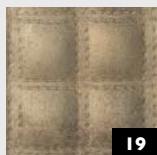
LL QUADRO
Bianco matt



LL QUADRO
Creme



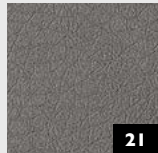
LL QUADRO
Nero matt



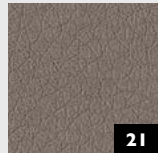
LL QUADRO
Luxury Bronze



LL Charcoal
Dark



LL Charcoal
Light



LL Dove Tale



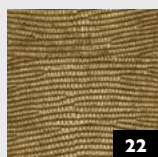
LL London Clay



LL Stony Ground



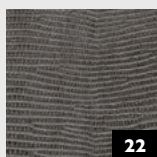
LL LEGUAN
Silver



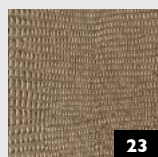
LL LEGUAN
Gold



LL LEGUAN
Copper



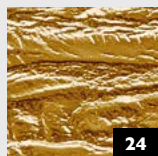
LL LEGUAN
Nero



LL LEGUAN Silk



LL LEGUAN
Bianco



LL PERSIAN
Gold



LL PERSIAN
Metallic



LL PEARL RAY
Gold



LL FLORAL
White



LL FLORAL
Vintage Silver/
Silver



LL FLORAL
White/Silver
matt



LL FLORAL
White/Gold matt



LL FLORAL
Black/Silver matt



LL COLLAGE
Oro



LL PELO
Marabu

SIBUGLAS



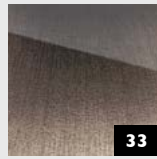
SG CURVED
Silver AR+



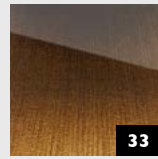
SG CURVED
Gold AR+



SG CURVED
Rose AR+



SG ALIGNED
Silver AR+



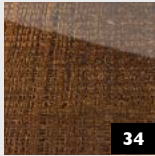
SG ALIGNED
Gold AR+



SG ALIGNED
Rose AR+



SG GRID
Silver AR+



SG GRID
Gold AR+



SG GRID
Rose AR+



SG GENESIS
Grey AR+



SG MARBLE
Brown AR+



SG MARBLE
Alpine AR+



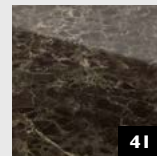
SG MARBLE
Black AR+



SG MARBLE
White AR+



SG MARBLE
Grey AR+



SG MARBLE
Emperador AR+



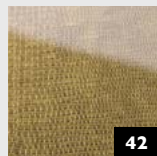
SG LEGUAN
Bianco met AR+



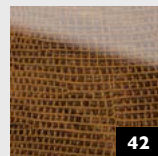
SG LEGUAN
Silver AR+



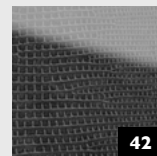
SG LEGUAN Silk
AR+



SG LEGUAN
Gold AR+



SG LEGUAN
Copper AR+



SG LEGUAN
Nero AR+



SG Vintage Silver
AR+



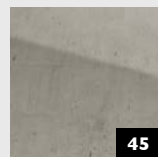
SG Vintage
Copper AR+



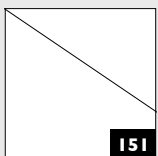
SG LUXURY
Gold AR+



SG LUXURY
Bronze AR+



SG Old Platin
AR+

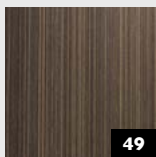


suitable
balancing sheet

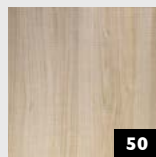
WOODLINE



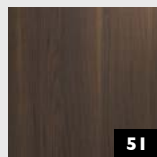
WL Carbonized
Wood



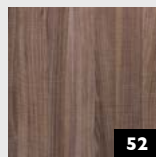
WL Wenge
Wood



WL Maple Alpine

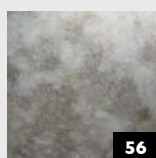


WL Nutwood

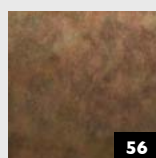


WL Nutwood
Country

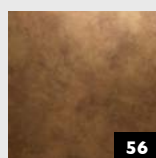
DECO-LINE



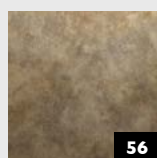
DM OXIDIZED
Silver AR



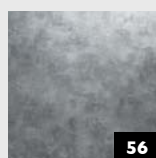
DM OXIDIZED
Autumn AR



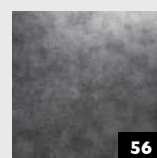
DM OXIDIZED
Copper AR



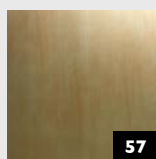
DM OXIDIZED
Nickel AR



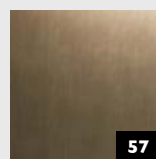
DM OXIDIZED
Platin AR



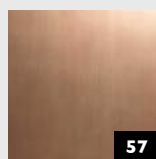
DM OXIDIZED
Titan AR



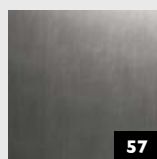
DM SLIGHTLY
USED Gold AR



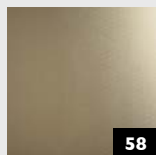
DM SLIGHTLY
USED Bronze AR



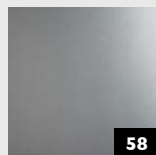
DM SLIGHTLY
USED Copper AR



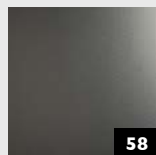
DM SLIGHTLY
USED Titan AR



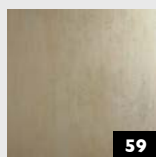
DM METALLIC
USED
Champagne AR



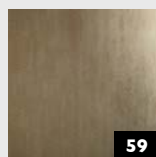
DM METALLIC
USED Silver AR



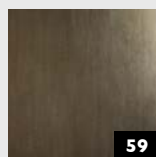
DM METALLIC
USED Titan AR



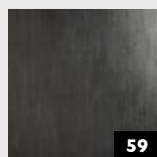
DM METALLIC
USED Ivory AR



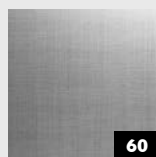
DM METALLIC
USED Sand AR



DM METALLIC
USED Bronze AR



DM METALLIC
USED Steel AR



DM REFINED
METAL Silver AR



DM REFINED
METAL Titan AR

DECO-LINE



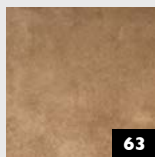
DM Silent Gold
AR



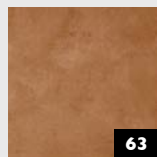
DM Iron Age AR



DM Classy Silver
AR



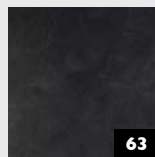
DM Classy
Bronze AR



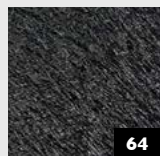
DM Classy
Copper AR



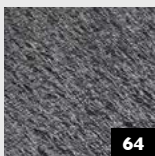
DM Classy Gold
AR



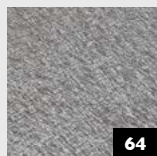
DM Classy Black
AR



DM Tecido Black



DM Tecido
Anthracite



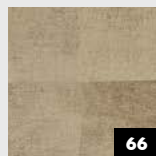
DM Tecido Silver



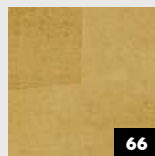
DM MONSOON
Vintage Brown



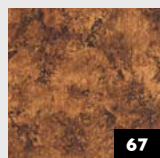
DM LUXURY
Silver AR



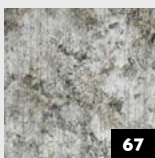
DM LUXURY
Bronze AR



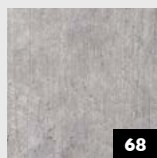
DM LUXURY
Gold AR



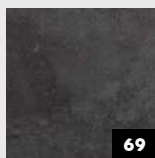
DM Vintage
Copper



DM Vintage
Silver



DM CEMENT
Light



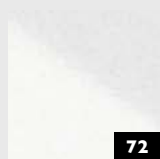
DM CEMENT
Dark



DM MARBLE
White



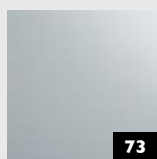
DM Travertin



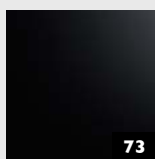
DM Magic White
AR



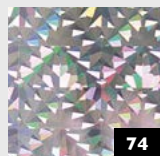
DM Magic Black
AR



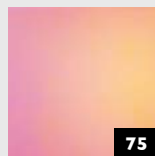
DM Magic
White matt AR



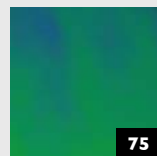
DM Magic Black
matt AR



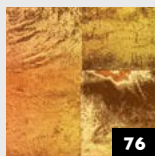
DM Galaxy
Silver



DM Hollywood

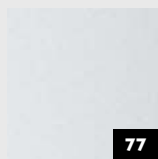


DM Aqua

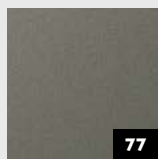


DM LUXURY
Holografico

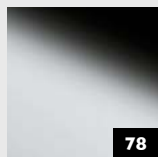
DECO-LINE



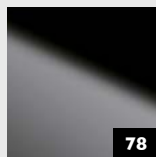
DM Silver PF
met



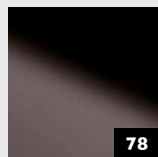
DM Smoke PF
met



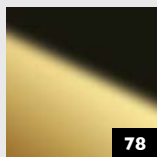
DM OPTICAL
MIRROR
Silver AR



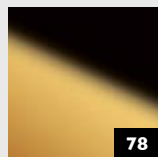
DM OPTICAL
MIRROR
Fashion Grey AR



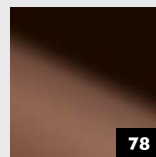
DM OPTICAL
MIRROR
Anthracite AR



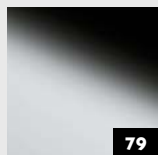
DM OPTICAL
MIRROR
Brass AR



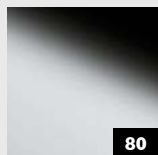
DM OPTICAL
MIRROR
Gold AR



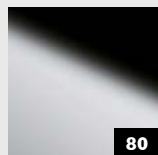
DM OPTICAL
MIRROR
Copper AR



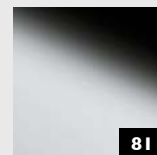
DM Silver H23



DM Silver



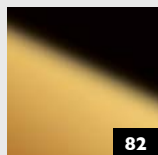
DM Silver/White



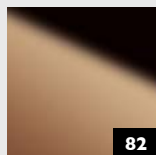
DM Silver MMS



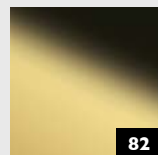
DM Gold MMS



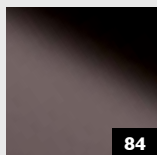
DM Gold AR



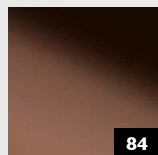
DM Rosegold AR



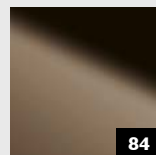
DM Brass AR



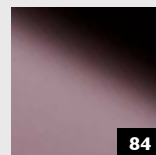
DM Anthracite
AR



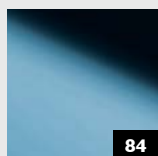
DM Copper AR



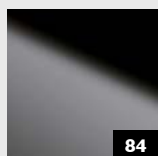
DM Brown AR



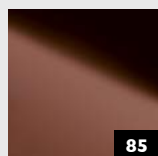
DM Rose AR



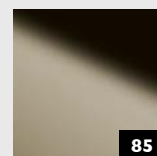
DM Iceblue AR



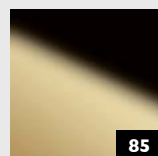
DM Fashion Grey
AR



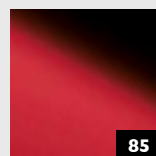
DM Bronze



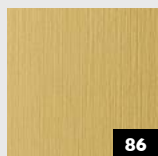
DM
Champagne



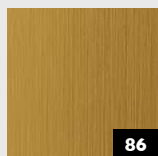
DM Gold 30



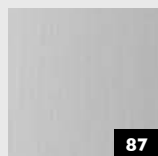
DM Fashion Red



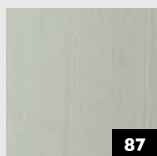
DM Brass
brushed matt AR



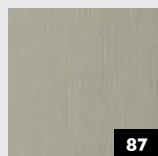
DM Gold
brushed matt AR



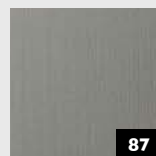
DM Silver
brushed



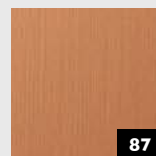
DM HGS



DM Champagne
brushed

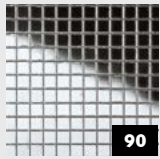


DM Titan
brushed

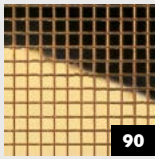


DM Copper
brushed

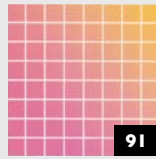
MULTISTYLE



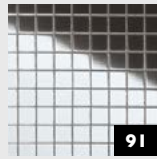
MS Silver 3x3
flex. Classic



MS Gold AR
3x3 flex. Classic



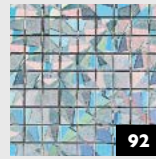
MS Hollywood
5x5 flex. Classic



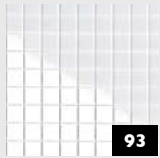
MS Silver 5x5
flex. Classic



MS Gold AR
5x5 flex. Classic



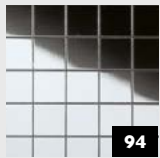
MS Galaxy Silver
5x5 flex. Classic



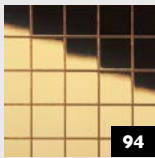
MS Magic White
5x5 flex. Classic



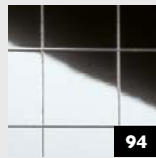
MS Magic Black
5x5 flex. Classic



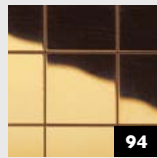
MS Silver 10x10
flex. Classic



MS Gold AR
10x10 flex.
Classic



MS Silver 20x20
flex. Classic



MS Gold AR
20x20 flex.
Classic

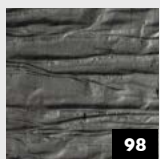


MSC Silver
10x10 flex.
Classic

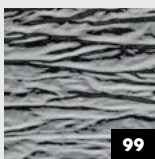


MSC Silver
30x30 flex.
Classic

STRUCTURE-LINE



SL CRASHED
Old Platin



SL CRASHED
Mirror Silver



SL IMPACT
Vintage Silver



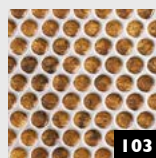
SL IMPACT
Antique Bronze



SL LAVA Copper



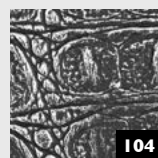
SL RACE Vintage
Silver/Bronze



SL RACE
Vintage Copper/
Silver



SL CROCO
Silver PF met/
Silver



SL CROCO
Smoke PF met/
Silver

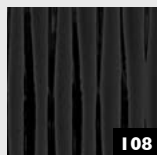


SL SQUARE 3
HGS

ACRYLIC-LINE



AC MOTION
ONE White



AC MOTION
ONE Black

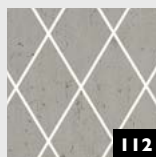


AC MOTION
TWO White

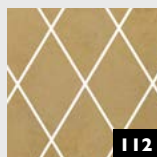


AC MOTION
TWO Black

TRANSLUCENT-LINE



TL LINEA
104x62 Old
Platin



TL LINEA
104x62 Silent
Gold

PUNCH-LINE / 3D



PL 3D Q-10-30
Old Platin/Silver



PL 3D H-10-30
Pearl White
PF/Gold



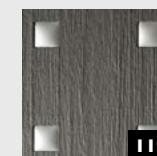
PL 3D ROSES
Pearl White PF/
Gold



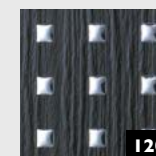
PL 3D ROSES
Silver PF met/
Silver



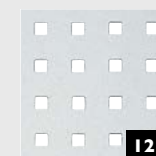
PL 3D Q 10-40-40
Silver PF met/
Silver



PL 3D Q 10-40-40
Smoke PF met
touch I/Silver matt

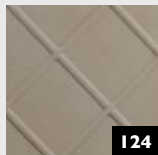


PL 3D Q 5-15-15
Black touch I/
Silver

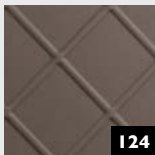


PL Q 5-15-15
Silver PF met

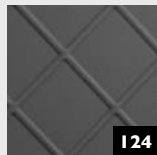
ANTIGRAV



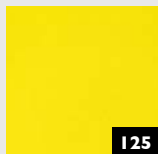
LL CORD
Stony Ground
AntigraV



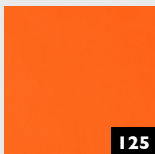
LL CORD
Dove Tale
AntigraV



LL CORD
Charcoal Light
AntigraV



LL Lemon
Yellow
AntigraV



LL Pumpkin
Orange
AntigraV



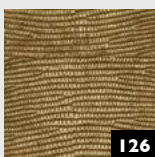
LL Cobalt Blue
AntigraV



LL Apple Green
AntigraV



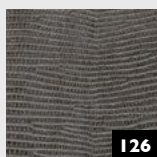
LL LEGUAN
Silver
AntigraV



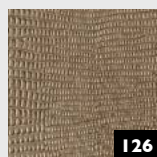
LL LEGUAN
Gold AntigraV



LL LEGUAN
Copper
AntigraV



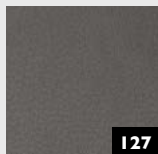
LL LEGUAN
Nero AntigraV



LL LEGUAN Silk
AntigraV



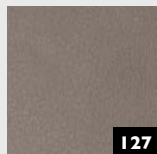
LL LEGUAN
Bianco
AntigraV



LL Charcoal
Dark AntigraV



LL Charcoal
Light AntigraV



LL Dove Tale
AntigraV



LL London Clay
AntigraV



LL Stony Ground
AntigraV



LL IMPERIAL
White AntigraV



DM CEMENT
Light AntigraV



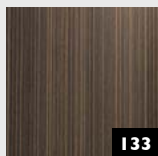
DM CEMENT
Dark AntigraV



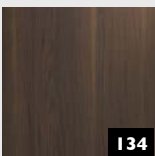
DM MARBLE
White AntigraV



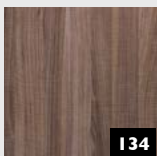
DM Travertin
AntigraV



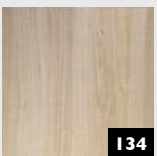
WL Wenge Wood
AntigraV



WL Nutwood
AntigraV



WL Nutwood
Country
AntigraV



WL Maple Alpine
AntigraV



WL Carbonized
Wood
AntigraV

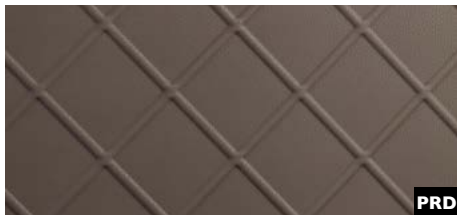


LEATHER-LINE

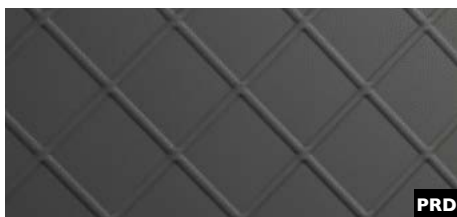
SIBU | DESIGN
we decorate.



LL CORD Stony Ground
2600 x 1000 / **NA** I9542 / **SA** I9545



LL CORD Dove Tale
2600 x 1000 / **NA** I9532 / **SA** I9544



LL CORD Charcoal Light
2600 x 1000 / **NA** I9543 / **SA** I9546



Photo: iStock.com

2600 x 1000



LEATHER-LINE

LL CORD

Product characteristics

	NA	SA
Base material	HIPS	
Surface material	PU-leather	
Material thickness mm	2	2,13
Max. relief height mm	3,2	3,33
Temperature stability	up to 60 °C	
Wet room suitability	■■■■■	
Rolled packable *	✓	✓

* Design sheets to be rolled with the decor side outwardly (both – NA and SA version). We recommend rolling not more than 3 sheets per carton (480 x 480 mm).

Extra equipment

	NA	SA
Special formats	—	—
Further thicknesses	—	—
Cuttings	✓	✓
Magnetic from 3 sheets	✓	
PVA pre-treatment	✓	—

Processing

	NA	SA
Cutting, punching	✓	✓
Drilling	✓	✓
Sawing	✓	—
Laser cutting	✓	✓
Hot bending	✓	—
PVA compressible	✓	—
Smallest bending radius	150 mm	150 mm

Accessories

SIBUKLE	Spatula A2
---------	------------

Special colors

On request



LL ROMBO 40 Bianco matt
2600 x 1000 / **NA** I5025 / **SA** I5041



LL ROMBO 40 Creme
2600 x 1000 / **NA** I3848 / **SA** I3863



LL ROMBO 40 Nero matt
2600 x 1000 / **NA** I5014 / **SA** I5029



LEATHER-LINE

LL ROMBO 40

2600 x 1000



Product characteristics

	NA	SA
Base material	HIPS, PE-foam	
Surface material	PU-leather	
Material thickness mm	3,8	4,04
Max. relief height mm	5,0	5,24
Temperature stability	up to 60 °C	
Wet room suitability	■■■■■	
Rolled packable *	✓	✓

* Design sheets to be rolled with the decor side outwardly (both – NA and SA version). We recommend rolling not more than 3 sheets per carton (480 x 480 mm).

Extra equipment

	NA	SA
Special formats	—	—
Further thicknesses	—	—
Cuttings	✓	✓
Magnetic	—	
PVA pre-treatment	—	—

Processing

	NA	SA
Cutting, punching	✓	✓
Drilling	✓	✓
Laser cutting	✓	✓
Hot bending	—	—
PVA compressible	—	—
Smallest bending radius	300 mm	300 mm

Accessories

SIBUKLE	Spatula A2
---------	------------

Special colors

On request



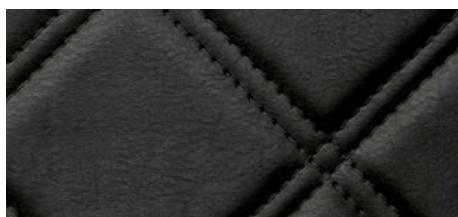
LL ROMBO 85 Bianco matt
2600 x 1000 / **NA** I5026 / **SA** I5042



LL ROMBO 85 Creme
2600 x 1000 / **NA** I3852 / **SA** I3867

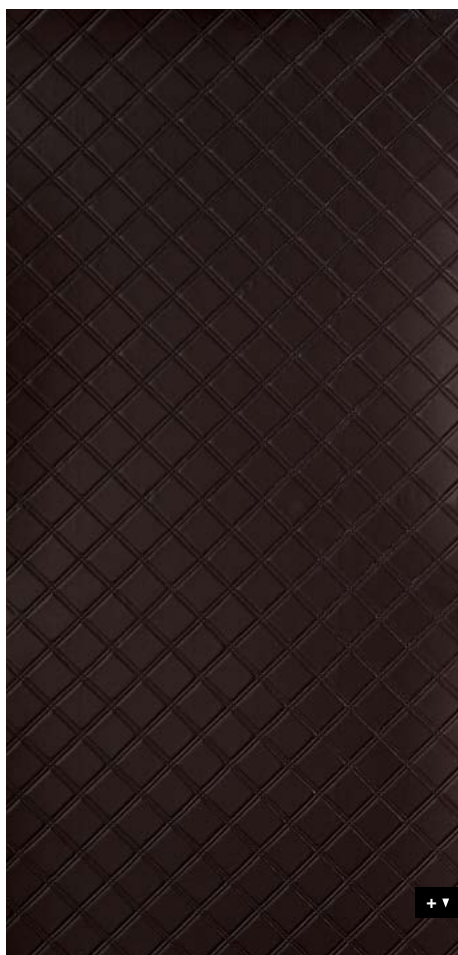


LL ROMBO 85 Mocca matt
2600 x 1000 / **NA** I5021 / **SA** I5037



LL ROMBO 85 Nero matt
2600 x 1000 / **NA** I5015 / **SA** I5030

2600 x 1000



□
LL ROMBO 85
Creme matt

Photo: Boris Breuer - CABINET Schranksysteme AG

LEATHER-LINE

LL ROMBO 85

Product characteristics

	NA	SA
Base material	HIPS, PE-foam	
Surface material	PU-leather	
Material thickness mm	3,8	4,04
Max. relief height mm	5,0	5,24
Temperature stability	up to 60 °C	
Wet room suitability	■■■■■	
Rolled packable *	✓	✓

* Design sheets to be rolled with the decor side outwardly (both – NA and SA version). We recommend rolling not more than 3 sheets per carton (480 x 480 mm).

Extra equipment

	NA	SA
Special formats	—	—
Further thicknesses	—	—
Cuttings	✓	✓
Magnetic	—	
PVA pre-treatment	—	—

Processing

	NA	SA
Cutting, punching	✓	✓
Drilling	✓	✓
Laser cutting	✓	✓
Hot bending	—	—
PVA compressible	—	—
Smallest bending radius	300 mm	300 mm

Accessories

SIBUKLE	Spatula A2
---------	------------

Special colors

On request



□
CR CRISTAL ROMBO 85
Bianco matt/Silver



CR CRISTAL ROMBO 85 Bianco matt/Silver
2600 x 1000 / **SA** 15044

LEATHER-LINE

CR CRISTAL ROMBO 85

Product characteristics

	SA
Base material	HIPS, PE-foam
Surface material	PU-leather, crystal: PMMA
Material thickness mm	4,04
Max. relief height mm	5,24
Temperature stability	up to 60 °C
Wet room suitability	■■■■□
Rolled packable *	✓

* Design sheets to be rolled with the decor side outwardly (both – NA and SA version). We recommend rolling not more than 3 sheets per carton (480 x 480 mm).

Extra equipment

	SA
Special formats	—
Further thicknesses	—
Cuttings	✓
Magnetic	—
PVA pre-treatment	—

Processing

	SA
Cutting, punching	✓
Drilling	✓
Laser cutting	✓
Hot bending	—
PVA compressible	—
Smallest bending radius	300 mm

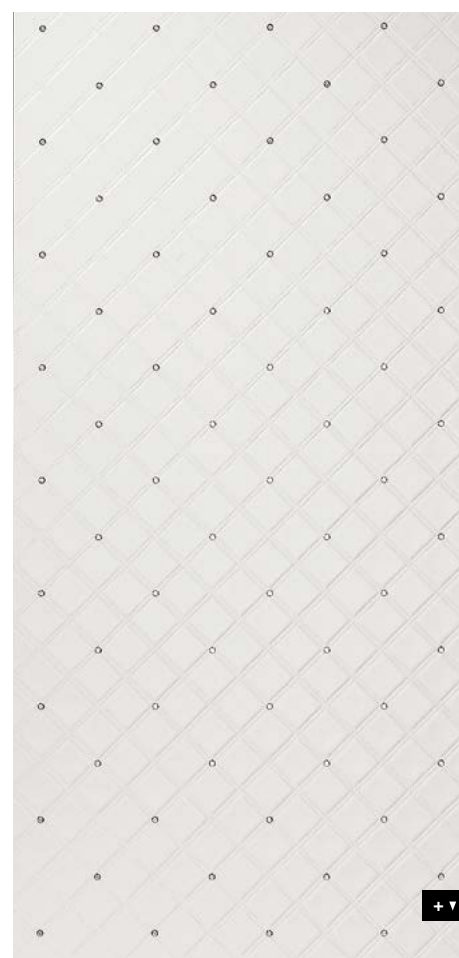
Accessories

SIBUKLE	Spatula A2
---------	------------

Special colors

On request

2600 x 1000

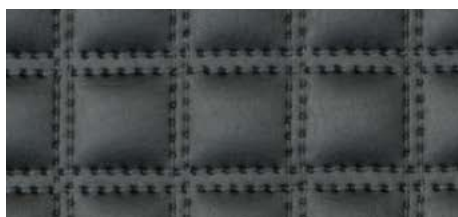




LL QUADRO Bianco matt
2600 x 1000 / **NA** I6420 / **SA** I5175



LL QUADRO Creme
2600 x 1000 / **NA** I4273 / **SA** I4277



LL QUADRO Nero matt
2600 x 1000 / **NA** I5017 / **SA** I5032



□ **LL QUADRO Nero matt**

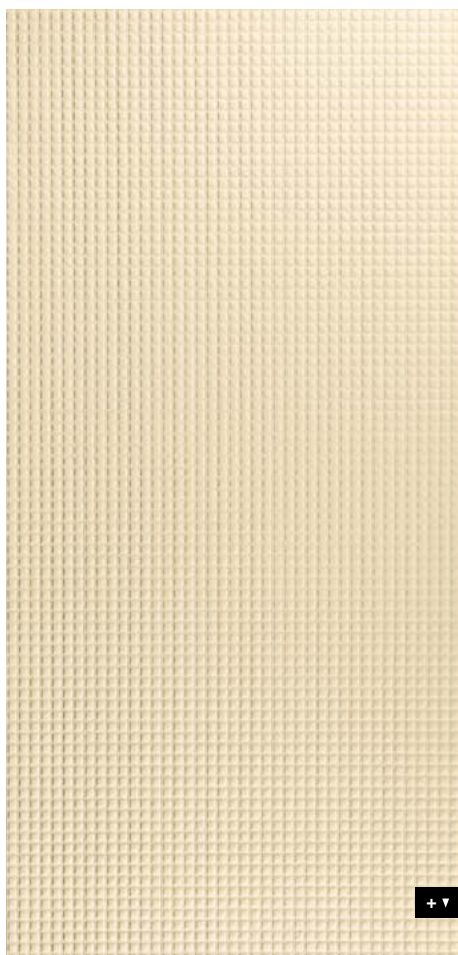
Photo: Jesse



□ **LL QUADRO Creme**

Photo: Bertrand Benoit

2600 x 1000



LEATHER-LINE

LL QUADRO

Product characteristics

	NA	SA
Base material	HIPS, PE-foam	
Surface material	PU-leather	
Material thickness mm	2,8	3,04
Max. relief height mm	4,8	5,04
Temperature stability	up to 60 °C	
Wet room suitability	■■■■■	
Rolled packable *	✓	✓

* Design sheets to be rolled with the decor side outwardly (both – NA and SA version). We recommend rolling not more than 3 sheets per carton (480 x 480 mm).

Extra equipment

	NA	SA
Special formats	—	—
Further thicknesses	—	—
Cuttings	✓	✓
Magnetic	—	
PVA pre-treatment	—	—

Processing

	NA	SA
Cutting, punching	✓	✓
Drilling	✓	✓
Laser cutting	✓	✓
Hot bending	—	—
PVA compressible	—	—
Smallest bending radius	300 mm	300 mm

Accessories

SIBUKLE	Spatula A2
---------	------------

Special colors

On request



□
LL QUADRO
Luxury Bronze



LL QUADRO Luxury Bronze
2600 x 1000 / **NA** 17831 / **SA** 17851

LEATHER-LINE

LL QUADRO

Product characteristics

	NA	SA
Base material	HIPS, PE-foam	
Surface material	PU-leather	
Material thickness mm	2,8	3,04
Max. relief height mm	4,8	5,04
Temperature stability	up to 60 °C	
Wet room suitability	■■■■□	
Rolled packable *	✓	✓

* Design sheets to be rolled with the decor side outwardly (both – NA and SA version). We recommend rolling not more than 3 sheets per carton (480 x 480 mm).

Extra equipment

	NA	SA
Special formats	—	—
Further thicknesses	—	—
Cuttings	✓	✓
Magnetic	—	
PVA pre-treatment	—	—

Processing

	NA	SA
Cutting, punching	✓	✓
Drilling	✓	✓
Laser cutting	✓	✓
Hot bending	—	—
PVA compressible	—	—
Smallest bending radius	300 mm	300 mm

Accessories

SIBUKLE	Spatula A2
---------	------------

Special colors

On request

2600 x 1000



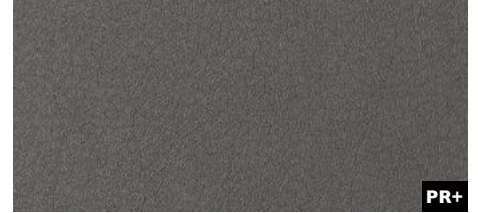


□ LL Charcoal Dark



□ LL Dove Tale

Photo: © istock.com



LL Charcoal Dark
2600 x 1000 / **NA** 19299 / **SA** 19302



LL Charcoal Light
2600 x 1000 / **NA** 19298 / **SA** 19301



LL Dove Tale
2600 x 1000 / **NA** 19013 / **SA** 19024



LL London Clay
2600 x 1000 / **NA** 19014 / **SA** 19025



LL Stony Ground
2600 x 1000 / **NA** 19012 / **SA** 19023

LEATHER-LINE

LEATHER-LINE

Product characteristics

	NA	SA
Base material	HIPS	
Surface material	PU-leather	
Material thickness mm	1,95	2,08
Temperature stability	up to 60 °C	
Wet room suitability	■■■■	
Rolled packable *	✓	✓

* Design sheets to be rolled with the decor side outwardly (both – NA and SA version). We recommend rolling not more than 3 sheets per carton (480 x 480 mm).

Processing

	NA	SA
Cutting, punching	✓	✓
Drilling	✓	✓
Sawing	✓	—
Laser cutting	✓	✓
Hot bending	✓	—
PVA compressible	✓	—
Smallest bending radius	150 mm	150 mm

Extra equipment

	NA	SA
Special formats	On request	
Further thicknesses	✓	✓
Cuttings	✓	✓
Magnetic from 3 sheets	✓	
PVA pre-treatment	✓	—

Accessories

SIBUKLE	Spatula A1
---------	------------

Special colors

On request



LL LEGUAN Silver

2600 x 1000 / **NA** I2883 / **SA** I2893



LL LEGUAN Gold

2600 x 1000 / **NA** I3480 / **SA** I3478



LL LEGUAN Copper

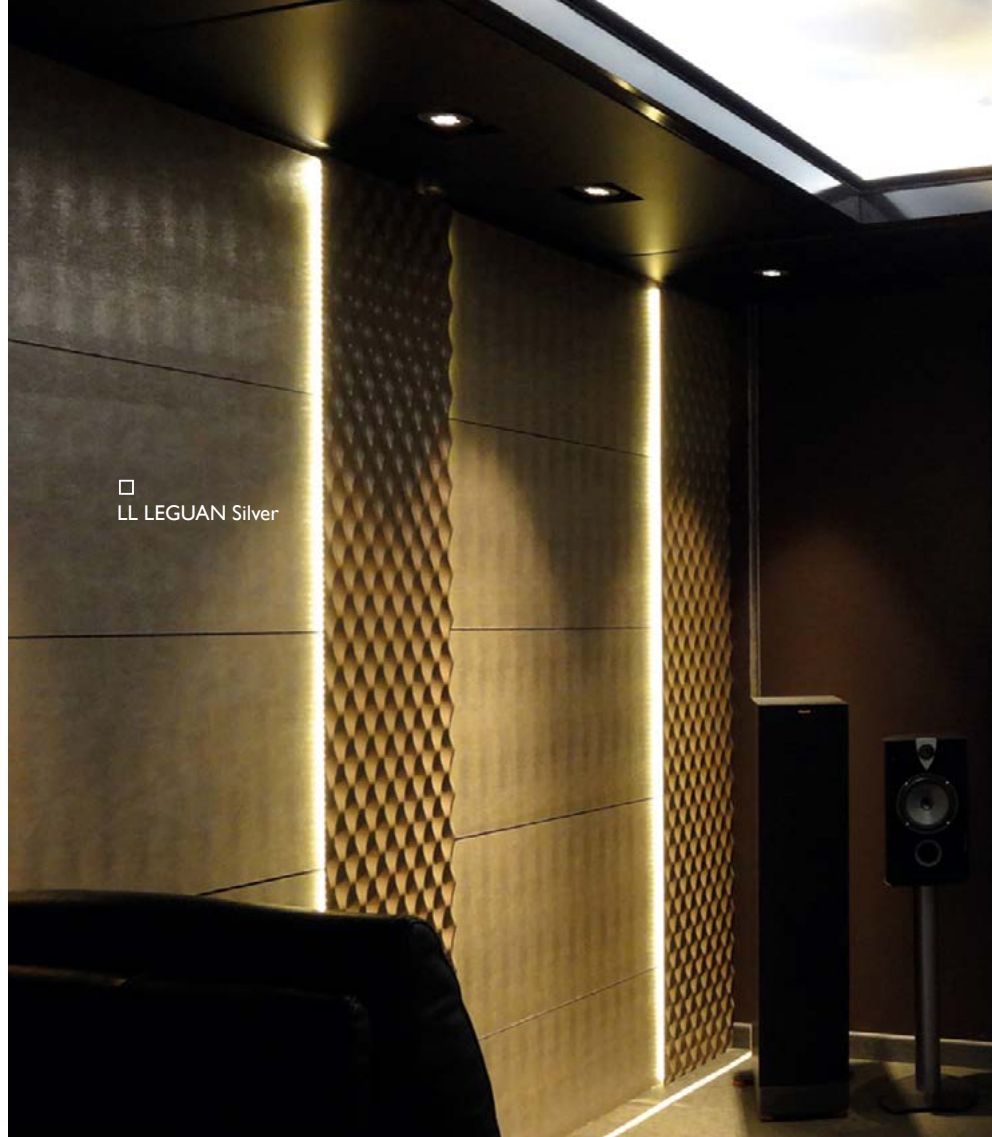
2600 x 1000 / **NA** I2884 / **SA** I2894



LL LEGUAN Nero

2600 x 1000 / **NA** I4778 / **SA** I4797

2600 x 1000



□ LL LEGUAN Silver

LEATHER-LINE

LL LEGUAN

Product characteristics

	NA	SA
Base material	HIPS	
Surface material	PU-leather	
Material thickness mm	1,5	1,63
Temperature stability	up to 60 °C	
Wet room suitability	■■■□	
Rolled packable *	✓	✓

* Design sheets to be rolled with the decor side outwardly (both – NA and SA version). We recommend rolling not more than 3 sheets per carton (480 x 480 mm).

Processing

	NA	SA
Cutting, punching	✓	✓
Drilling	✓	✓
Sawing	✓	—
Laser cutting	✓	✓
Hot bending	✓	—
PVA compressible	✓	—
Smallest bending radius	150 mm	150 mm

Extra equipment

	NA	SA
Special formats	On request	
Further thicknesses	✓	✓
Cuttings	✓	✓
Magnetic from 3 sheets	✓	
PVA pre-treatment	✓	—

Accessories

SIBUKLE	Spatula A1
---------	------------

Special colors

—



□
LL LEGUAN Bianco



LL LEGUAN Silk
2600 x 1000 / 1,5 mm / **NA** 16451 / **SA** 16452



LL LEGUAN Bianco
2600 x 1000 / 1,4 mm / **NA** 15609 / **SA** 15610

LEATHER-LINE

LL LEGUAN

Product characteristics

	NA	SA
Base material	HIPS	
Surface material	PU-leather	
Material thickness mm	1,4 / 1,5	1,53 / 1,63
Temperature stability	up to 60 °C	
Wet room suitability	Silk	■■■□
	Bianco	■■■■
Rolled packable *	✓	✓

* Design sheets to be rolled with the decor side outwardly (both – NA and SA version). We recommend rolling not more than 3 sheets per carton (480 x 480 mm).

Extra equipment

	NA	SA
Special formats	On request	
Further thicknesses	✓	✓
Cuttings	✓	✓
Magnetic from 3 sheets	✓	
PVA pre-treatment	✓	—

Processing

	NA	SA
Cutting, punching	✓	✓
Drilling	✓	✓
Sawing	✓	—
Laser cutting	✓	✓
Hot bending	✓	—
PVA compressible	✓	—
Smallest bending radius	150 mm	150 mm

Accessories

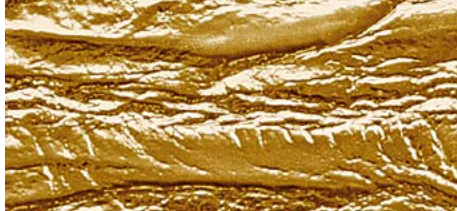
SIBUKLE	Spatula A1
---------	------------

Special colors

—

2600 x 1000





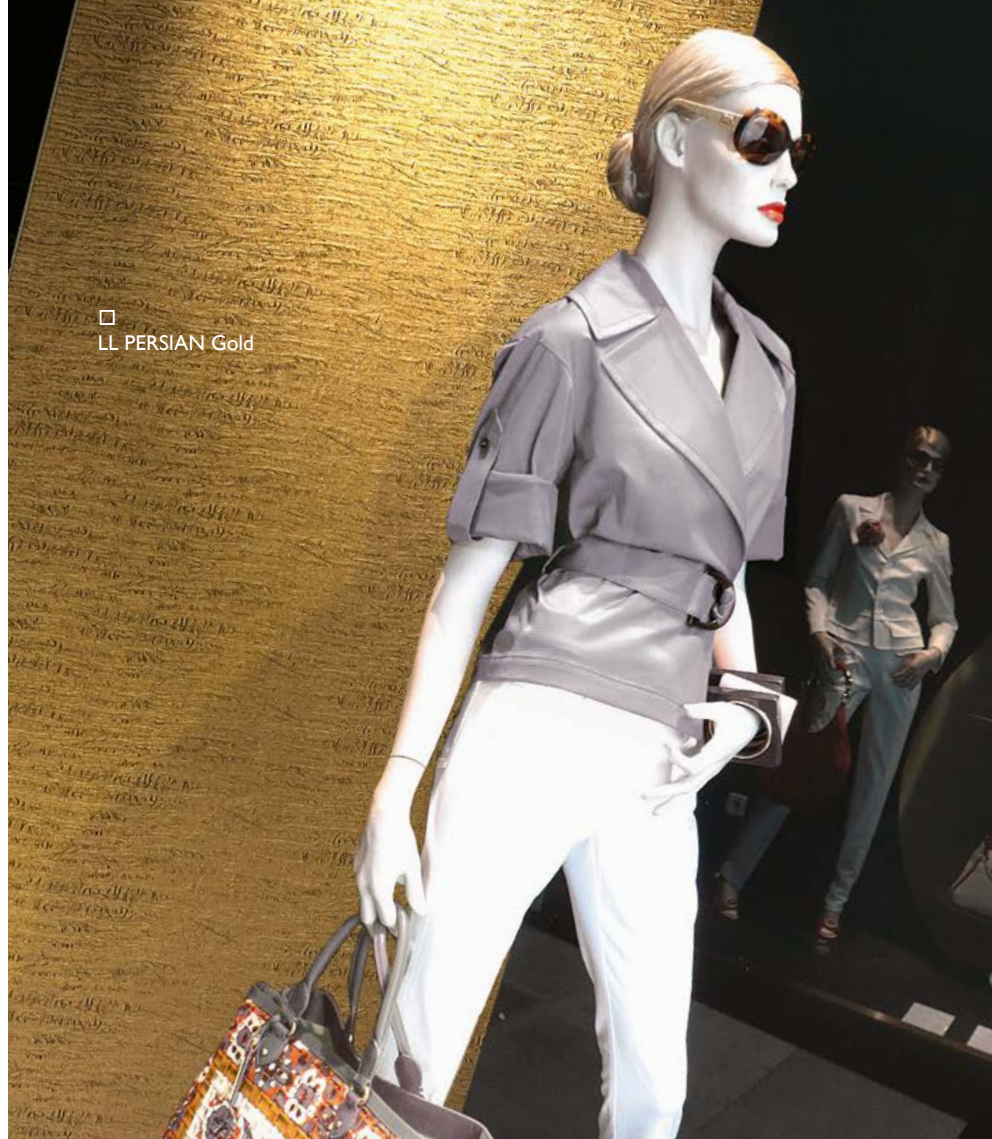
LL PERSIAN Gold

2600 x 1000 / **NA** I5656 / **SA** I5660



LL PERSIAN Metallic

2600 x 1000 / **NA** I5655 / **SA** I5659



□
LL PERSIAN Gold

2600 x 1000



LEATHER-LINE

LL PERSIAN

Product characteristics

	NA	SA
Base material	HIPS	
Surface material	PU-leather	
Material thickness mm	1,9	2,03
Temperature stability	up to 60 °C	
Wet room suitability	■■■□	
Rolled packable *	✓	✓

* Design sheets to be rolled with the decor side outwardly (both – NA and SA version). We recommend rolling not more than 3 sheets per carton (480 x 480 mm).

Processing

	NA	SA
Cutting, punching	✓	✓
Drilling	✓	✓
Sawing	✓	—
Laser cutting	✓	✓
Hot bending	✓	—
PVA compressible	✓	—
Smallest bending radius	150 mm	150 mm

Extra equipment

	NA	SA
Special formats	On request	
Further thicknesses	✓	✓
Cuttings	✓	✓
Magnetic from 3 sheets	✓	
PVA pre-treatment	✓	—

Accessories

SIBUKLE	Spatula A2
---------	------------

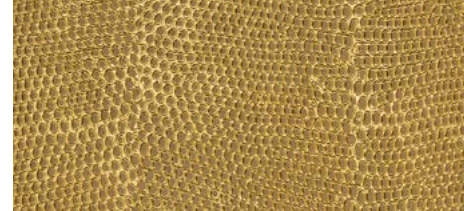
Special colors

—





Photo: © Kaupo Kikkas



LL PEARL RAY Gold
2600 x 1000 / **NA** 17015 / **SA** 17016

LEATHER-LINE

LL PEARL RAY

2600 x 1000

Product characteristics

	NA	SA
Base material	HIPS	
Surface material	PU-leather	
Material thickness mm	1,6	1,73
Temperature stability	up to 60 °C	
Wet room suitability	■■■□	
Rolled packable *	✓	✓

* Design sheets to be rolled with the decor side outwardly (both – NA and SA version). We recommend rolling not more than 3 sheets per carton (480 x 480 mm).

Processing

	NA	SA
Cutting, punching	✓	✓
Drilling	✓	✓
Sawing	✓	—
Laser cutting	✓	✓
Hot bending	✓	—
PVA compressible	✓	—
Smallest bending radius	150 mm	150 mm

Extra equipment

	NA	SA
Special formats	On request	
Further thicknesses	✓	✓
Cuttings	✓	✓
Magnetic from 3 sheets	✓	
PVA pre-treatment	✓	—

Accessories

SIBUKLE	Spatula A1
---------	------------

Special colors

On request



LL FLORAL White

2600 x 1000 / **NA** 13470 / **SA** 13473



Photo: Wipro

2600 x 1000



LEATHER-LINE

LL FLORAL

Product characteristics

	NA	SA
Base material	HIPS	
Surface material	PU-leather	
Material thickness mm	2,1	2,23
Max. relief height mm	2,9	3,03
Temperature stability	up to 60 °C	
Wet room suitability	■■■■■	
Rolled packable *	✓	✓

* Design sheets to be rolled with the decor side outwardly (both – NA and SA version). We recommend rolling not more than 3 sheets per carton (480 x 480 mm).

Extra equipment

	NA	SA
Special formats	—	—
Further thicknesses	—	—
Cuttings	✓	✓
Magnetic from 3 sheets	✓	
PVA pre-treatment	✓	—

Processing

	NA	SA
Cutting, punching	✓	✓
Drilling	✓	✓
Sawing	✓	—
Laser cutting	✓	✓
Hot bending	✓	—
PVA compressible	✓	—
Smallest bending radius	150 mm	150 mm

Accessories

SIBUKLE	Spatula A2
---------	------------

Special colors

On request



□ LL FLORAL
Vintage Silver/Silver

Photo: GARANTline



LL FLORAL Vintage Silver/Silver
2600 x 1000 / **NA** I7266 / **SA** I7267



LL FLORAL White/Silver matt
2600 x 1000 / **NA** I3418 / **SA** I3414



LL FLORAL White/Gold matt
2600 x 1000 / **NA** I3419 / **SA** I3415



LL FLORAL Black/Silver matt
2600 x 1000 / **NA** I3416 / **SA** I3412

LEATHER-LINE

LL FLORAL

Product characteristics

	NA	SA
Base material	HIPS	
Surface material	PU-leather	
Material thickness mm	1,9	2,03
Max. relief height mm	2,9	3,03
Temperature stability	up to 60 °C	
Wet room suitability	■■■■□	
Rolled packable *	✓	✓

* Design sheets to be rolled with the decor side outwardly (both – NA and SA version). We recommend rolling not more than 3 sheets per carton (480 x 480 mm).

Extra equipment

	NA	SA
Special formats	—	—
Further thicknesses	—	—
Cuttings	✓	✓
Magnetic from 3 sheets	✓	
PVA pre-treatment	✓	—

Processing

	NA	SA
Cutting, punching	✓	✓
Drilling	✓	✓
Sawing	✓	—
Laser cutting	✓	✓
Hot bending	✓	—
PVA compressible	✓	—
Smallest bending radius	150 mm	150 mm

Accessories

SIBUKLE	Spatula A2
---------	------------

Special colors

On request

2600 x 1000





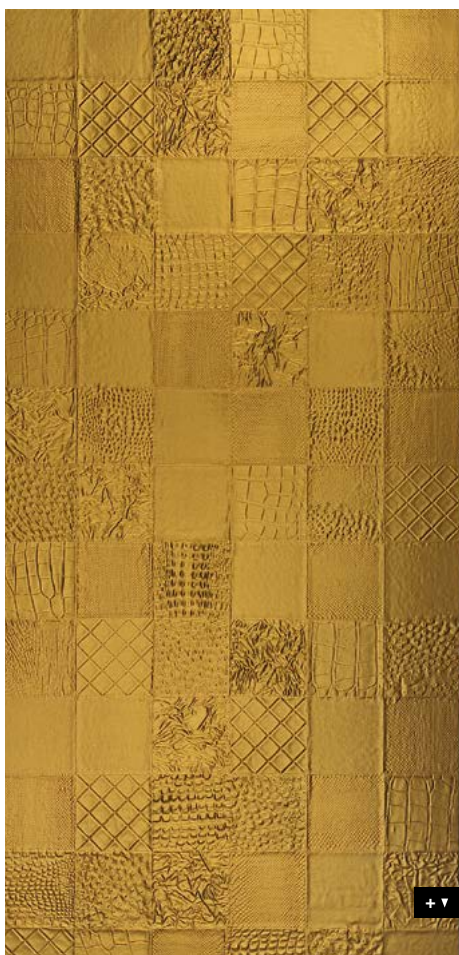
LL COLLAGE Oro

2600 x 1000 / 1,9 / **NA** 13923 / **SA** 13926



□
LL COLLAGE Oro

2600 x 1000



LEATHER-LINE

LL COLLAGE

Product characteristics

	NA	SA
Base material	HIPS	
Surface material	PU-leather	
Material thickness mm	1,9	2,15
Max. relief height mm	3,5	3,75
Temperature stability	up to 60 °C	
Wet room suitability	■■■□	
Rolled packable *	✓	✓

Processing

	NA	SA
Cutting, punching	✓	✓
Drilling	✓	✓
Sawing	✓	—
Laser cutting	✓	✓
Hot bending	✓	—
PVA compressible	✓	—
Smallest bending radius	150 mm	150 mm

Extra equipment

	NA	SA
Special formats	—	—
Further thicknesses	—	—
Cuttings	✓	✓
Magnetic from 3 sheets	✓	
PVA pre-treatment Oro	—	—

Accessories

SIBUKLE	Spatula A2
---------	------------

Special colors

On request

□
LL PELO Marabu



LL PELO Marabu
2600 x 1000 / **NA** 14309 / **SA** 14325



LEATHER-LINE LL PELO

Product characteristics

	NA	SA
Base material	HIPS	
Surface material	PET	
Material thickness mm	1,7	1,83
Temperature stability	up to 60 °C	
Wet room suitability	■■■■	
Rolled packable *	✓	✓

* Design sheets to be rolled with the decor side outwardly (both – NA and SA version). We recommend rolling not more than 3 sheets per carton (480 x 480 mm).

Processing

	NA	SA
Cutting, punching	✓	✓
Drilling	✓	✓
Sawing	✓	—
Laser cutting	✓	✓
Hot bending	✓	—
PVA compressible	✓	—
Smallest bending radius	150 mm	150 mm

Extra equipment

	NA	SA
Special formats	On request	
Further thicknesses	✓	✓
Cuttings	✓	✓
Magnetic from 3 sheets	✓	
PVA pre-treatment	✓	—

Accessories

SIBUKLE	Spatula A1
---------	------------

Special colors

—

2600 x 1000





SIBUGLAS

SIBU | DESIGN
we decorate.



SG CURVED Silver AR+
2600 x 1000 / **NA** 20177 / **SA** 20215



SG CURVED Gold AR+
2600 x 1000 / **NA** 20176 / **SA** 20214



SG CURVED Rose AR+
2600 x 1000 / **NA** 20178 / **SA** 20216



Photo: © istock.com

2600 x 1000



SIBUGLAS scratch-resistant

SG CURVED AR+

Product characteristics

	NA	SA
Base material	PMMA	
Surface material	PU-leather	
Material thickness mm	2,9	3,03
Temperature stability	up to 60 °C	
Wet room suitability	■■■■■	
Abrasion resistance	■■■■■■■	
Rolled packable	—	—

Processing

	NA	SA
Cutting, punching	—	—
Drilling	✓	✓
Sawing	✓	✓
Laser cutting	✓	✓
Hot bending	—	—
PVA compressible	✓	—
Smallest bending radius	1000 mm	

Extra equipment

	NA	SA
Special formats	On request	
Further thicknesses	✓	✓
Cuttings	✓	✓
Magnetic from 3 sheets*	✓	
PVA pre-treatment	—	—

* Ground must be a SIBU metal foil SA (ref. 17637, self adhesive).

Accessories

SIBUKLE	Spatula A2
---------	------------

Special colors

—



SG ALIGNED Silver AR+
2600 x 1000 / **NA** 20180 / **SA** 20219



SG ALIGNED Gold AR+
2600 x 1000 / **NA** 20179 / **SA** 20218



SG ALIGNED Rose AR+
2600 x 1000 / **NA** 20181 / **SA** 20217

SIBUGLAS scratch-resistant

SG ALIGNED AR+

Product characteristics

	NA	SA
Base material	PMMA	
Surface material	PU-leather	
Material thickness mm	2,9	3,03
Temperature stability	up to 60 °C	
Wet room suitability	■■■■■	
Abrasion resistance	■■■■■■■	
Rolled packable	—	—

Processing

	NA	SA
Cutting, punching	—	—
Drilling	✓	✓
Sawing	✓	✓
Laser cutting	✓	✓
Hot bending	—	—
PVA compressible	✓	—
Smallest bending radius	1000 mm	

Extra equipment

	NA	SA
Special formats	On request	
Further thicknesses	✓	✓
Cuttings	✓	✓
Magnetic from 3 sheets*	✓	
PVA pre-treatment	—	—

* Ground must be a SIBU metal foil SA (ref. 17637, self adhesive).

Accessories

SIBUKLE	Spatula A2
---------	------------

Special colors

—

2600 x 1000





SG GRID Silver AR+
2600 x 1000 / **NA** 20183 / **SA** 20222



SG GRID Gold AR+
2600 x 1000 / **NA** 20182 / **SA** 20221



SG GRID Rose AR+
2600 x 1000 / **NA** 20184 / **SA** 20220



Photo: © istock.com

2600 x 1000



SIBUGLAS scratch-resistant SG GRID AR+

Product characteristics

	NA	SA
Base material	PMMA	
Surface material	PU-leather	
Material thickness mm	2,9	3,03
Temperature stability	up to 60 °C	
Wet room suitability	■■■■■	
Abrasion resistance	■■■■■■■	
Rolled packable	—	—

Processing

	NA	SA
Cutting, punching	—	—
Drilling	✓	✓
Sawing	✓	✓
Laser cutting	✓	✓
Hot bending	—	—
PVA compressible	✓	—
Smallest bending radius	1000 mm	

Extra equipment

	NA	SA
Special formats	On request	
Further thicknesses	✓	✓
Cuttings	✓	✓
Magnetic from 3 sheets*	✓	
PVA pre-treatment	—	—

* Ground must be a SIBU metal foil SA (ref. 17637, self adhesive).

Accessories

SIBUKLE	Spatula A2
---------	------------

Special colors

—



□
SG GENESIS
Grey AR+

Photo: © istock.com



PR+

SG GENESIS Grey AR+
2600 x 1000 / **NA** 20185 / **SA** 20223

SIBUGLAS scratch-resistant

SG GENESIS Grey AR+

2600 x 1000

Product characteristics

	NA	SA
Surface material	PMMA	
Back side material	Paper	
Material thickness mm	2,3	2,43
Temperature stability	up to 60 °C	
Wet room suitability	■■■■	
Abrasion resistance	■■■■■■■■	
Rolled packable	—	—

Processing

	NA	SA
Cutting, punching	—	—
Drilling	✓	✓
Sawing (supported by a panel)	✓	✓
Laser cutting	✓	✓
Hot bending	—	—
PVA compressible	✓	—
Smallest bending radius	1000 mm	

Extra equipment

	NA	SA
Special formats	On request	
Further thicknesses	✓	✓
Cuttings	✓	✓
Magnetic from 3 sheets *	✓	
PVA pre-treatment	—	—

* Ground must be a SIBU metal foil SA (ref. 17637, self adhesive).

Accessories

SIBUKLE	Spatula A2
---------	------------

Special colors

—





PR+

SG MARBLE Brown AR+
2600 x 1000 / **NA** I9331 / **SA** I9342



□ SG MARBLE Brown AR+

Photo: © istock.com

2600 x 1000



SIBUGLAS scratch-resistant

SG MARBLE Brown AR+

Product characteristics

	NA	SA
Surface material	PMMA	
Back side material	Paper	
Material thickness mm	2,3	2,43
Temperature stability	up to 60 °C	
Wet room suitability	■■■■	
Abrasion resistance	■■■■■■■	
Rolled packable	—	—

Processing

	NA	SA
Cutting, punching	—	—
Drilling	✓	✓
Sawing (supported by a panel)	✓	✓
Laser cutting	✓	✓
Hot bending	—	—
PVA compressible	✓	—
Smallest bending radius	1000 mm	1000 mm

Extra equipment

	NA	SA
Special formats	On request	
Further thicknesses	✓	✓
Cuttings	✓	✓
Magnetic from 3 sheets *	✓	
PVA pre-treatment	—	—

* Ground must be a SIBU metal foil SA (ref. I7637, self adhesive).

Accessories

SIBUKLE	Spatula A2
---------	------------

Special colors

—



SG MARBLE Alpine AR+
2600 x 1000 / **NA** 19329 / **SA** 19340

SIBUGLAS scratch-resistant

SG MARBLE Alpine AR+

2600 x 1000



Product characteristics

	NA	SA
Surface material	PMMA	
Back side material	Paper	
Material thickness mm	2,3	2,43
Temperature stability	up to 60 °C	
Wet room suitability	■■■■	
Abrasion resistance	■■■■■■■■	
Rolled packable	—	—

Processing

	NA	SA
Cutting, punching	—	—
Drilling	✓	✓
Sawing (supported by a panel)	✓	✓
Laser cutting	✓	✓
Hot bending	—	—
PVA compressible	✓	—
Smallest bending radius	1000 mm	1000 mm

Extra equipment

	NA	SA
Special formats	On request	
Further thicknesses	✓	✓
Cuttings	✓	✓
Magnetic from 3 sheets *	✓	
PVA pre-treatment	—	—

* Ground must be a SIBU metal foil SA (ref. 17637, self adhesive).

Accessories

SIBUKLE	Spatula A2
---------	------------

Special colors

—



SG MARBLE Black AR+
2600 x 1000 / **NA** 19330 / **SA** 19341

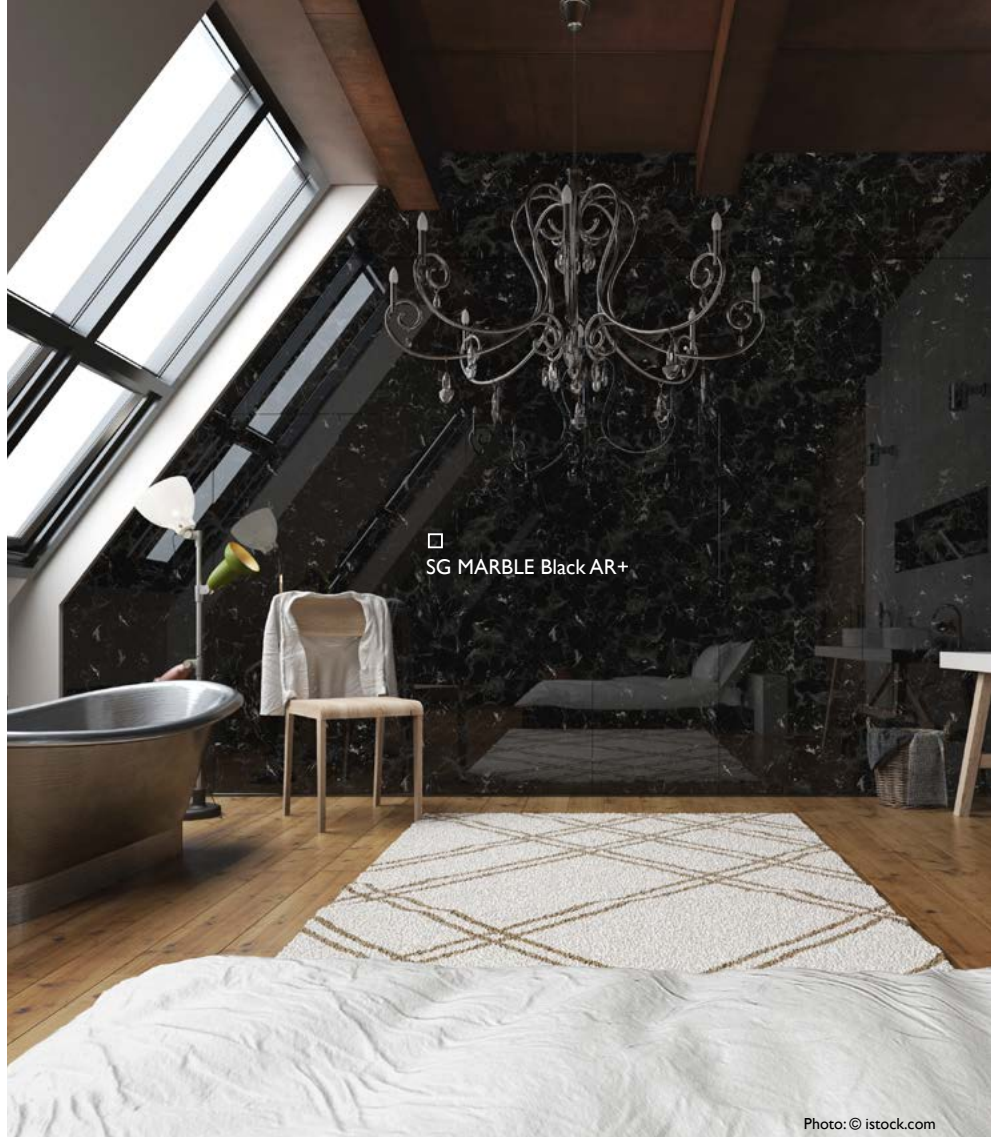


Photo: © istock.com

2600 x 1000



SIBUGLAS scratch-resistant

SG MARBLE Black AR+

Product characteristics

	NA	SA
Surface material	PMMA	
Back side material	Paper	
Material thickness mm	2,3	2,43
Temperature stability	up to 60 °C	
Wet room suitability	■■■■	
Abrasion resistance	■■■■■■■	
Rolled packable	—	—

Processing

	NA	SA
Cutting, punching	—	—
Drilling	✓	✓
Sawing (supported by a panel)	✓	✓
Laser cutting	✓	✓
Hot bending	—	—
PVA compressible	✓	—
Smallest bending radius	1000 mm	1000 mm

Extra equipment

	NA	SA
Special formats	On request	
Further thicknesses	✓	✓
Cuttings	✓	✓
Magnetic from 3 sheets *	✓	
PVA pre-treatment	—	—

* Ground must be a SIBU metal foil SA (ref. 17637, self adhesive).

Accessories

SIBUKLE	Spatula A2
---------	------------

Special colors

—



SG MARBLE White AR+
2600 x 1000 / **NA** I9334 / **SA** I9345

Photo: © fotolia.com

SIBUGLAS scratch-resistant

SG MARBLE White AR+

2600 x 1000

Product characteristics

	NA	SA
Surface material	PMMA	
Back side material	Paper	
Material thickness mm	2,3	2,43
Temperature stability	up to 60 °C	
Wet room suitability	■■■■	
Abrasion resistance	■■■■■■■■	
Rolled packable	—	—

Processing

	NA	SA
Cutting, punching	—	—
Drilling	✓	✓
Sawing (supported by a panel)	✓	✓
Laser cutting	✓	✓
Hot bending	—	—
PVA compressible	✓	—
Smallest bending radius	1000 mm	1000 mm

Extra equipment

	NA	SA
Special formats	On request	
Further thicknesses	✓	✓
Cuttings	✓	✓
Magnetic from 3 sheets *	✓	
PVA pre-treatment	—	—

* Ground must be a SIBU metal foil SA (ref. I7637, self adhesive).

Accessories

SIBUKLE	Spatula A2
---------	------------

Special colors

—



SG MARBLE Grey AR+
2600 x 1000 / **NA** 19333 / **SA** 19344



SG MARBLE Grey AR+

Photo: © shutterstock.com

2600 x 1000



SIBUGLAS scratch-resistant

SG MARBLE Grey AR+

Product characteristics

	NA	SA
Surface material	PMMA	
Back side material	Paper	
Material thickness mm	2,3	2,43
Temperature stability	up to 60 °C	
Wet room suitability	■■■■	
Abrasion resistance	■■■■■■■	
Rolled packable	—	—

Processing

	NA	SA
Cutting, punching	—	—
Drilling	✓	✓
Sawing (supported by a panel)	✓	✓
Laser cutting	✓	✓
Hot bending	—	—
PVA compressible	✓	—
Smallest bending radius	1000 mm	1000 mm

Extra equipment

	NA	SA
Special formats	On request	
Further thicknesses	✓	✓
Cuttings	✓	✓
Magnetic from 3 sheets *	✓	
PVA pre-treatment	—	—

* Ground must be a SIBU metal foil SA (ref. 17637, self adhesive).

Accessories

SIBUKLE	Spatula A2
---------	------------

Special colors

—



□ SG MARBLE Emperador AR+

Photo: © istock.com



PR+

SG MARBLE Emperador AR+
2600 x 1000 / **NA** I9332 / **SA** I9343

SIBUGLAS scratch-resistant

SG MARBLE Emperador AR+

Product characteristics

	NA	SA
Surface material	PMMA	
Back side material	Paper	
Material thickness mm	2,3	2,43
Temperature stability	up to 60 °C	
Wet room suitability	■■■■	
Abrasion resistance	■■■■■■■■	
Rolled packable	—	—

Processing

	NA	SA
Cutting, punching	—	—
Drilling	✓	✓
Sawing (supported by a panel)	✓	✓
Laser cutting	✓	✓
Hot bending	—	—
PVA compressible	✓	—
Smallest bending radius	1000 mm	1000 mm

Extra equipment

	NA	SA
Special formats	On request	
Further thicknesses	✓	✓
Cuttings	✓	✓
Magnetic from 3 sheets *	✓	
PVA pre-treatment	—	—

* Ground must be a SIBU metal foil SA (ref. I7637, self adhesive).

Accessories

SIBUKLE	Spatula A2
---------	------------

Special colors

—

2600 x 1000



+ ▼



SG LEGUAN Bianco met AR+
2600 x 1000 / **NA** I9304 / **SA** I9305



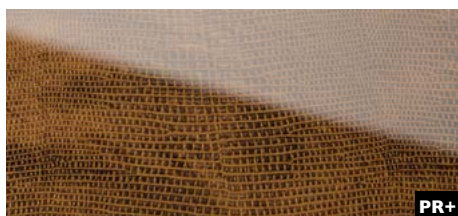
SG LEGUAN Silver AR+
2600 x 1000 / **NA** I6975 / **SA** I6976



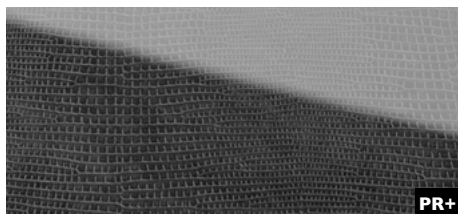
SG LEGUAN Silk AR+
2600 x 1000 / **NA** 20275 / **SA** 20276



SG LEGUAN Gold AR+
2600 x 1000 / **NA** I6977 / **SA** I6982



SG LEGUAN Copper AR+
2600 x 1000 / **NA** I6976 / **SA** I6981



SG LEGUAN Nero AR+
2600 x 1000 / **NA** I8089 / **SA** I8095



□ SG LEGUAN Silver AR+

Photo: dieeinrichtung Manzenreiter

SIBUGLAS

scratch-resistant

SG LEGUAN AR+

Product characteristics

	NA	SA
Surface material	PMMA	
Back side material	PU-leather	
Material thickness mm	2,8	2,93
Temperature stability	up to 60 °C	
Wet room suitability	■■■■■	
Abrasion resistance	■■■■■■■	
Rolled packable	—	—

Processing

	NA	SA
Cutting, punching	—	—
Drilling	✓	✓
Sawing (supported by a panel)	✓	✓
Laser cutting	✓	✓
Hot bending	—	—
PVA compressible	✓	—
Smallest bending radius	1000 mm	1000 mm

Extra equipment

	NA	SA
Special formats	On request	
Further thicknesses	✓	✓
Cuttings	✓	✓
Magnetic from 3 sheets *	✓	
PVA pre-treatment	—	—

Accessories

SIBUKLE	Spatula A2
---------	------------

Special colors

On request

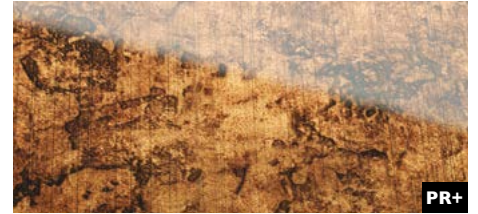
* Ground must be real metal or a SIBU metal foil SA (ref. I7637, self adhesive).



□ SG Vintage Copper AR+



SG Vintage Silver AR+
2600 x 1000 / **NA** 17197 / **SA** 17199



SG Vintage Copper AR+
2600 x 1000 / **NA** 17198 / **SA** 17200

SIBUGLAS

scratch-resistant

SG Vintage AR+

2600 x 1000



Product characteristics

	NA	SA
Surface material	PMMA	
Back side material	PU-leather	
Material thickness mm	2,8	2,93
Temperature stability	up to 60 °C	
Wet room suitability	■■■■	
Abrasion resistance	■■■■■■■■	
Rolled packable	—	—

Processing

	NA	SA
Cutting, punching	—	—
Drilling	✓	✓
Sawing (supported by a panel)	✓	✓
Laser cutting	✓	✓
Hot bending	—	—
PVA compressible	✓	—
Smallest bending radius	1000 mm	1000 mm

Extra equipment

	NA	SA
Special formats	On request	
Further thicknesses	✓	✓
Cuttings	✓	✓
Magnetic from 3 sheets *	✓	
PVA pre-treatment	—	—

* Ground must be real metal or a SIBU metal foil SA (ref. 17637, self adhesive).

Accessories

SIBUKLE	Spatula A2
---------	------------

Special colors

—



SG LUXURY Gold AR+
2600 x 1000 / **NA** 17819 / **SA** 17840



SG LUXURY Bronze AR+
2600 x 1000 / **NA** 17820 / **SA** 17841



2600 x 1000



SIBUGLAS

scratch-resistant

SG LUXURY AR+

Product characteristics

	NA	SA
Surface material	PMMA	
Back side material	PU-leather	
Material thickness mm	3,1	3,23
Temperature stability	up to 60 °C	
Wet room suitability	■■■■■	
Abrasion resistance	■■■■■■■	
Rolled packable	—	—

Processing

	NA	SA
Cutting, punching	—	—
Drilling	✓	✓
Sawing (supported by a panel)	✓	✓
Laser cutting	✓	✓
Hot bending	—	—
PVA compressible	✓	—
Smallest bending radius	1000 mm	1000 mm

Extra equipment

	NA	SA
Special formats	On request	
Further thicknesses	✓	✓
Cuttings	✓	✓
Magnetic from 3 sheets *	✓	
PVA pre-treatment	—	—

* Ground must be real metal or a SIBU metal foil SA (ref. 17637, self adhesive).

Accessories

SIBUKLE	Spatula A2
---------	------------

Special colors

On request



SG Old Platin AR+
2600 x 1000 / **NA** 18067 / **SA** 18001

SIBUGLAS scratch-resistant

SG Old Platin AR+

2600 x 1000



Product characteristics

	NA	SA
Surface material	PMMA	
Back side material	PU-leather	
Material thickness mm	3,1	3,23
Temperature stability	up to 60 °C	
Wet room suitability	■■■■■	
Abrasion resistance	■■■■■■■■■	
Rolled packable	—	—

Processing

	NA	SA
Cutting, punching	—	—
Drilling	✓	✓
Sawing (supported by a panel)	✓	✓
Laser cutting	✓	✓
Hot bending	—	—
PVA compressible	✓	—
Smallest bending radius	1000 mm	1000 mm

Extra equipment

	NA	SA
Special formats	On request	
Further thicknesses	✓	✓
Cuttings	✓	✓
Magnetic from 3 sheets *	✓	
PVA pre-treatment	—	—

Accessories

SIBUKLE	Spatula A2
---------	------------

Special colors

—

* Ground must be real metal or a SIBU metal foil SA (ref. 17637, self adhesive).



WOODLINE

SIBU | DESIGN
we decorate.



WL Carbonized Wood
2600 x 1000 / **NA** 20157 / **SA** 20224



Photo: © istock.com

2600 x 1000



WOOD-LINE

WL Carbonized Wood

Product characteristics

	NA	SA
Base material	HIPS	
Surface material	impregnated paper	
Material thickness mm	1,3	1,43
Temperature stability	up to 60 °C	
Wet room suitability	■■■■□	
Abrasion resistance	■■■■■□□	
Rolled packable **	✓	✓

Processing

	NA	SA
Cutting, punching	✓	✓
Drilling	✓	✓
Sawing, milling	✓	—
Laser cutting	✓	✓
Hot bending	✓	—
Thermoforming	—	—
PVA compressible	✓	—
Smallest bending radius	150 mm	

Extra equipment

	NA	SA
Special formats	On request	
Further thicknesses	✓	✓
Cuttings	✓	✓
Magnetic from 3 sheets***	✓	
PVA pre-treatment	✓	—

Accessories

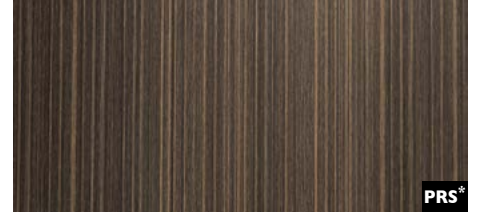
SIBUKLE	Spatula A1
---------	------------

Special colors

—



□
WL Wenge Wood



WL Wenge Wood
2600 x 1000 / **NA** I9016 / **SA** I9027

WOOD-LINE

WL Wenge Wood

2600 x 1000

Product characteristics

	NA	SA
Base material	HIPS	
Surface material	impregnated paper	
Material thickness mm	1,2	1,33
Temperature stability	up to 60 °C	
Wet room suitability	■■■■□	
Abrasion resistance	■■■■□□□	
Rolled packable **	✓	✓

Processing

	NA	SA
Cutting, punching	✓	✓
Drilling	✓	✓
Sawing, milling	✓	—
Laser cutting	✓	✓
Hot bending	✓	—
Thermoforming	—	—
PVA compressible	✓	—
Smallest bending radius	150 mm	150 mm

Extra equipment

	NA	SA
Special formats	On request	
Further thicknesses	✓	✓
Cuttings	✓	✓
Magnetic from 3 sheets	✓	
PVA pre-treatment	✓	—

Accessories

SIBUKLE	Spatula A1
---------	------------

Special colors

—

* Prior to printing a corona or plasma treatment has to be carried out.
Upon request available in pre-treated version.

** Design sheets are to be rolled with the patterned side on the inside
(applies for both the NA and SA versions). We recommend that not more than
3 sheets be rolled per carton (480 x 480 mm).



PRS*

WL Maple Alpine2600 x 1000 / **NA** I9018 / **SA** I9029□
WL Maple Alpine

2600 x 1000

**WOOD-LINE****WL Maple Alpine****Product characteristics**

	NA	SA
Base material	HIPS	
Surface material	impregnated paper	
Material thickness mm	1,3	1,43
Temperature stability	up to 60 °C	
Wet room suitability	■■■□	
Abrasion resistance	■■■■□□	
Rolled packable **	✓	✓

Processing

	NA	SA
Cutting, punching	✓	✓
Drilling	✓	✓
Sawing, milling	✓	—
Laser cutting	✓	✓
Hot bending	✓	—
Thermoforming	—	—
PVA compressible	✓	—
Smallest bending radius	150 mm	150 mm

Extra equipment

	NA	SA
Special formats	On request	
Further thicknesses	✓	✓
Cuttings	✓	✓
Magnetic from 3 sheets	✓	
PVA pre-treatment	✓	—

Accessories

SIBUKLE	Spatula A1
---------	------------

Special colors

—

+ ▼



□
WL Nutwood



WL Nutwood
2600 x 1000 / **NA** I9019 / **SA** I9030

WOOD-LINE

WL Nutwood

Product characteristics

	NA	SA
Base material	HIPS	
Surface material	impregnated paper	
Material thickness mm	1,3	1,43
Temperature stability	up to 60 °C	
Wet room suitability	■■■■□	
Abrasion resistance	■■■■□□	
Rolled packable **	✓	✓

Processing

	NA	SA
Cutting, punching	✓	✓
Drilling	✓	✓
Sawing, milling	✓	—
Laser cutting	✓	✓
Hot bending	✓	—
Thermoforming	—	—
PVA compressible	✓	—
Smallest bending radius	150 mm	150 mm

Extra equipment

	NA	SA
Special formats	On request	
Further thicknesses	✓	✓
Cuttings	✓	✓
Magnetic from 3 sheets	✓	
PVA pre-treatment	✓	—

Accessories

SIBUKLE	Spatula A1
---------	------------

Special colors

—

* Prior to printing a corona or plasma treatment has to be carried out.
Upon request available in pre-treated version.

** Design sheets are to be rolled with the patterned side on the inside
(applies for both the NA and SA versions). We recommend that not more
than 3 sheets be rolled per carton (480 x 480 mm).

2600 x 1000





WL Nutwood Country
2600 x 1000 / **NA** I9017 / **SA** I9028



Photo: © Katarzyna Białasiewicz

2600 x 1000



WOOD-LINE

WL Nutwood Country

Product characteristics

	NA	SA
Base material	HIPS	
Surface material	impregnated paper	
Material thickness mm	1,3	1,43
Temperature stability	up to 60 °C	
Wet room suitability	■■■□	
Abrasion resistance	■■■■□□	
Rolled packable **	✓	✓

Processing

	NA	SA
Cutting, punching	✓	✓
Drilling	✓	✓
Sawing, milling	✓	—
Laser cutting	✓	✓
Hot bending	✓	—
Thermoforming	—	—
PVA compressible	✓	—
Smallest bending radius	150 mm	150 mm

Extra equipment

	NA	SA
Special formats	On request	
Further thicknesses	✓	✓
Cuttings	✓	✓
Magnetic from 3 sheets	✓	
PVA pre-treatment	✓	—

Accessories

SIBUKLE	Spatula AI
---------	------------

Special colors

—



□
WL Nutwood Country



DECO-LINE

SIBU | DESIGN
we decorate.



DM OXIDIZED Silver AR
2600 x 1000 / **NA** 20139 / **SA** 20187



DM OXIDIZED Autumn AR
2600 x 1000 / **NA** 20143 / **SA** 20191



DM OXIDIZED Copper AR
2600 x 1000 / **NA** 20138 / **SA** 20186



DM OXIDIZED Nickel AR
2600 x 1000 / **NA** 20140 / **SA** 20188



DM OXIDIZED Platin AR
2600 x 1000 / **NA** 20141 / **SA** 20189



DM OXIDIZED Titan AR
2600 x 1000 / **NA** 20142 / **SA** 20190

2600 x 1000

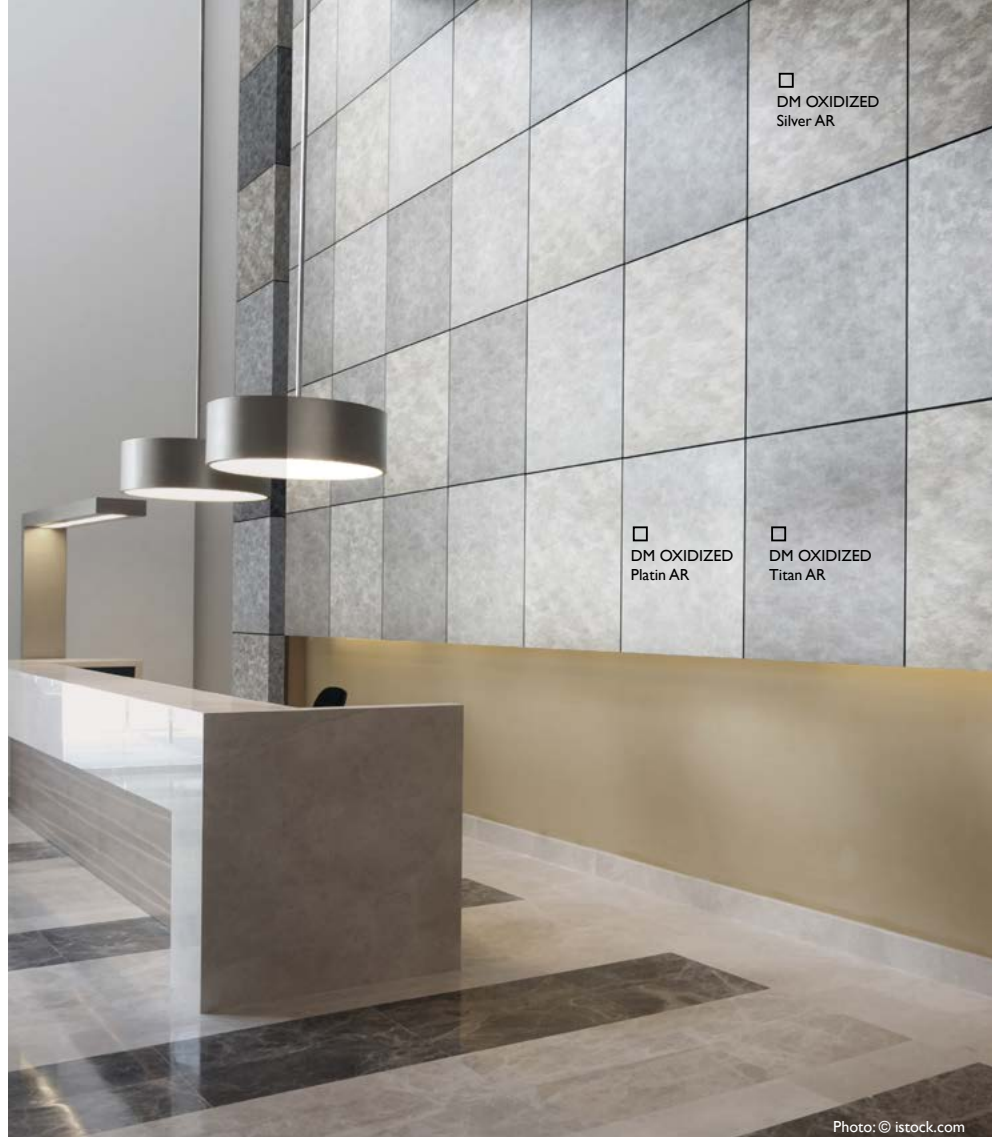


Photo: © istock.com

DECO-LINE abrasion-resistant

DM OXIDIZED AR

Product characteristics

	NA	SA
Base material	HIPS	
Surface material	Print	
Material thickness mm	1,0	1,13
Temperature stability	up to 60 °C	
Wet room suitability	■■■■□	
Abrasion resistance	■■■■■■■	
Rolled packable	✓	✓

Processing

	NA	SA
Cutting, punching	✓	✓
Drilling	✓	✓
Sawing, milling	✓	—
Laser cutting	✓	✓
Hot bending	—	—
Thermoforming	—	—
PVA compressible	✓	—
Smallest bending radius	150 mm	

Extra equipment

	NA	SA
Special formats	On request	
Further thicknesses	✓	✓
Cuttings	✓	✓
Magnetic from 3 sheets *	✓	
PVA pre-treatment	✓	—

* Ground must be a SIBU metal foil SA (ref. 17637, self adhesive).

Accessories

SIBUKLE	Spatula Al
---------	------------

Special colors

—



Photo: © istock.com



DM SLIGHTLY USED Gold AR
2600 x 1000 / **NA** 20153 / **SA** 20201



DM SLIGHTLY USED Bronze AR
2600 x 1000 / **NA** 20152 / **SA** 20200



DM SLIGHTLY USED Copper AR
2600 x 1000 / **NA** 20151 / **SA** 20199



DM SLIGHTLY USED Titan AR
2600 x 1000 / **NA** 20154 / **SA** 20202

DECO-LINE abrasion-resistant

DM SLIGHTLY USED AR

Product characteristics

	NA	SA
Base material	HIPS	
Surface material	Print	
Material thickness mm	1,0	1,13
Temperature stability	up to 60 °C	
Wet room suitability	■■■■□	
Abrasion resistance	■■■■■■■	
Rolled packable	✓	✓

Processing

	NA	SA
Cutting, punching	✓	✓
Drilling	✓	✓
Sawing, milling	✓	—
Laser cutting	✓	✓
Hot bending	—	—
Thermoforming	—	—
PVA compressible	✓	—
Smallest bending radius	150 mm	

Extra equipment

	NA	SA
Special formats	On request	
Further thicknesses	✓	✓
Cuttings	✓	✓
Magnetic from 3 sheets *	✓	
PVA pre-treatment	✓	—

* Ground must be a SIBU metal foil SA (ref. 17637, self adhesive).

Accessories

SIBUKLE	Spatula A1
---------	------------

Special colors

—

2600 x 1000





FR
PR+

DM METALLIC USED Champagne AR
2600 x 1000 / **NA** 20150 / **SA** 20198



FR
PR+

DM METALLIC USED Silver AR
2600 x 1000 / **NA** 20145 / **SA** 20193



FR
PR+

DM METALLIC USED Titan AR
2600 x 1000 / **NA** 20144 / **SA** 20192



Photo: © istock.com

2600 x 1000

DECO-LINE abrasion-resistant

DM METALLIC USED AR

Product characteristics

	NA	SA
Base material	HIPS	
Surface material	Print	
Material thickness mm	1,0	1,13
Temperature stability	up to 60 °C	
Wet room suitability	■■■□	
Abrasion resistance	■■■■■■■	
Rolled packable	✓	✓

Processing

	NA	SA
Cutting, punching	✓	✓
Drilling	✓	✓
Sawing, milling	✓	—
Laser cutting	✓	✓
Hot bending	—	—
Thermoforming	—	—
PVA compressible	✓	—
Smallest bending radius	150 mm	

Extra equipment

	NA	SA
Special formats	On request	
Further thicknesses	✓	✓
Cuttings	✓	✓
Magnetic from 3 sheets *	✓	
PVA pre-treatment	✓	—

* Ground must be a SIBU metal foil SA (ref. 17637, self adhesive).

Accessories

SIBUKLE	Spatula AI
---------	------------

Special colors

—



DM METALLIC USED Ivory AR
2600 x 1000 / **NA** 20149 / **SA** 20197



DM METALLIC USED Sand AR
2600 x 1000 / **NA** 20147 / **SA** 20195



DM METALLIC USED Bronze AR
2600 x 1000 / **NA** 20146 / **SA** 20194



DM METALLIC USED Steel AR
2600 x 1000 / **NA** 20148 / **SA** 20196

DECO-LINE abrasion-resistant

DM METALLIC USED AR

Product characteristics

	NA	SA
Base material	HIPS	
Surface material	Print	
Material thickness mm	1,0	1,13
Temperature stability	up to 60 °C	
Wet room suitability	■■■■□	
Abrasion resistance	■■■■■■■	
Rolled packable	✓	✓

Processing

	NA	SA
Cutting, punching	✓	✓
Drilling	✓	✓
Sawing, milling	✓	—
Laser cutting	✓	✓
Hot bending	—	—
Thermoforming	—	—
PVA compressible	✓	—
Smallest bending radius	150 mm	

Extra equipment

	NA	SA
Special formats	On request	
Further thicknesses	✓	✓
Cuttings	✓	✓
Magnetic from 3 sheets *	✓	
PVA pre-treatment	✓	—

* Ground must be a SIBU metal foil SA (ref. 17637, self adhesive).

Accessories

SIBUKLE	Spatula A1
---------	------------

Special colors

—

2600 x 1000





FR
PR+

DM REFINED METAL Silver AR
2600 x 1000 / **NA** 20155 / **SA** 20203



FR
PR+

DM REFINED METAL Titan AR
2600 x 1000 / **NA** 20156 / **SA** 20204

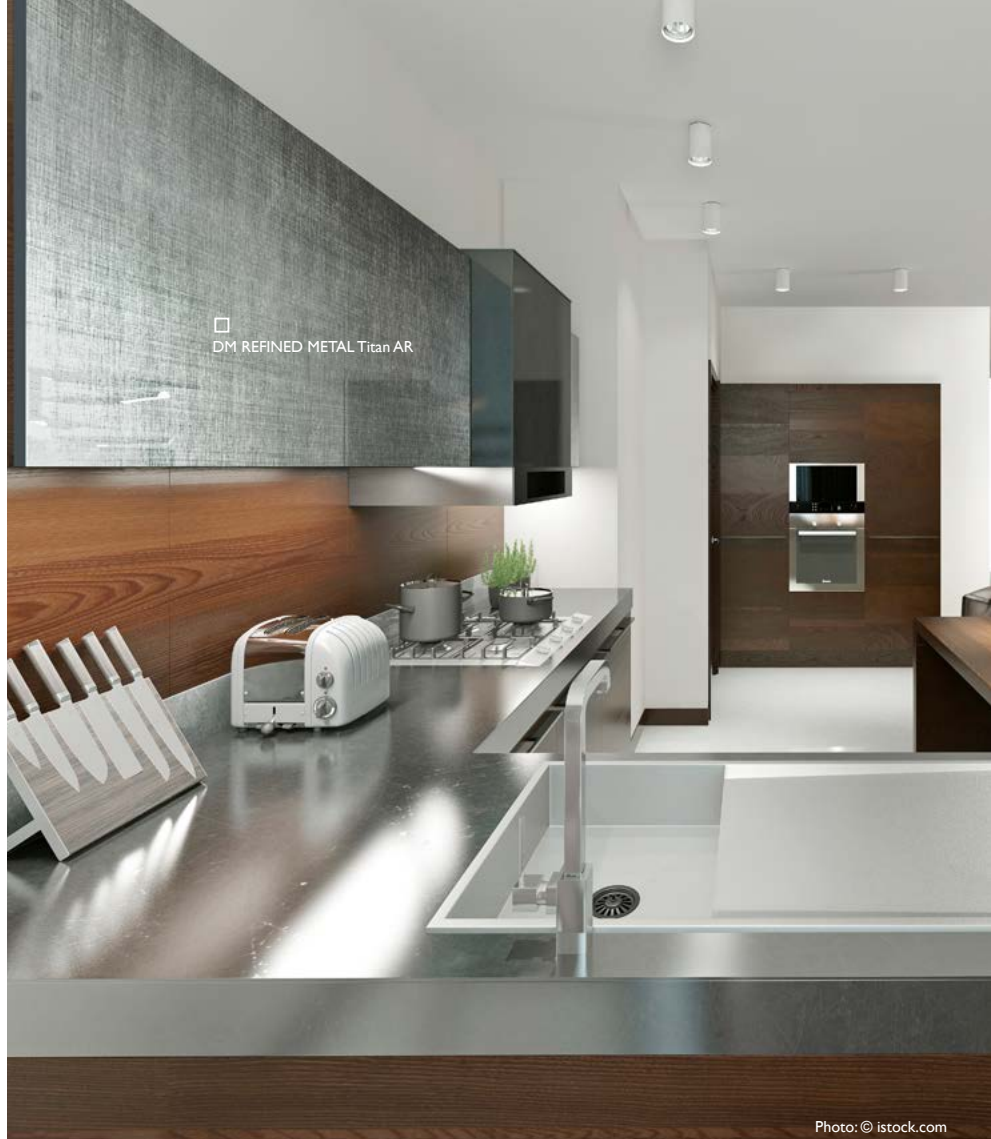


Photo: © istock.com

2600 x 1000

DECO-LINE abrasion-resistant

DM REFINED METAL AR

Product characteristics

	NA	SA
Base material	HIPS	
Surface material	Print	
Material thickness mm	1,0	1,13
Temperature stability	up to 60 °C	
Wet room suitability	■■■□	
Abrasion resistance	■■■■■■■	
Rolled packable	✓	✓

Processing

	NA	SA
Cutting, punching	✓	✓
Drilling	✓	✓
Sawing, milling	✓	—
Laser cutting	✓	✓
Hot bending	—	—
Thermoforming	—	—
PVA compressible	✓	—
Smallest bending radius	150 mm	

Extra equipment

	NA	SA
Special formats	On request	
Further thicknesses	✓	✓
Cuttings	✓	✓
Magnetic from 3 sheets *	✓	
PVA pre-treatment	✓	—

* Ground must be a SIBU metal foil SA (ref. 17637, self adhesive).

Accessories

SIBUKLE	Spatula AI
---------	------------

Special colors

—



□
DM Silent Gold AR



DM Silent Gold AR
2600 x 1000 / **NA** 19200 / **SA** 19208

DECO-LINE abrasion-resistant

DM Silent Gold AR

2600 x 1000

Product characteristics

	NA	SA
Base material	HIPS	
Surface material	Print	
Material thickness mm	1,0	1,13
Temperature stability	up to 60 °C	
Wet room suitability	■■■■□	
Abrasion resistance	■■■■■■■	
Rolled packable	✓	✓

Processing

	NA	SA
Cutting, punching	✓	✓
Drilling	✓	✓
Sawing, milling	✓	—
Laser cutting	✓	✓
Hot bending	—	—
Thermoforming	—	—
PVA compressible	✓	—
Smallest bending radius	150 mm	150 mm

Extra equipment

	NA	SA
Special formats	On request	
Further thicknesses	✓	✓
Cuttings	✓	✓
Magnetic from 3 sheets *	✓	
PVA pre-treatment	✓	—

* Ground must be a SIBU metal foil SA (ref. 17637, self adhesive).

Accessories

SIBUKLE	Spatula A1
---------	------------

Special colors

—



FR
PR+

DM Iron Age AR
2600 x 1000 / **NA** 19201 / **SA** 19209



□
DM Iron Age AR

Photo: © fotolia.com

2600 x 1000



DECO-LINE abrasion-resistant

DM Iron Age AR

Product characteristics

	NA	SA
Base material	HIPS	
Surface material	Print	
Material thickness mm	1,0	1,13
Temperature stability	up to 60 °C	
Wet room suitability	■■■□	
Abrasion resistance	■■■■■■■	
Rolled packable	✓	✓

Processing

	NA	SA
Cutting, punching	✓	✓
Drilling	✓	✓
Sawing, milling	✓	—
Laser cutting	✓	✓
Hot bending	—	—
Thermoforming	—	—
PVA compressible	✓	—
Smallest bending radius	150 mm	150 mm

Extra equipment

	NA	SA
Special formats	On request	
Further thicknesses	✓	✓
Cuttings	✓	✓
Magnetic from 3 sheets *	✓	
PVA pre-treatment	✓	—

* Ground must be a SIBU metal foil SA (ref. 17637, self adhesive).

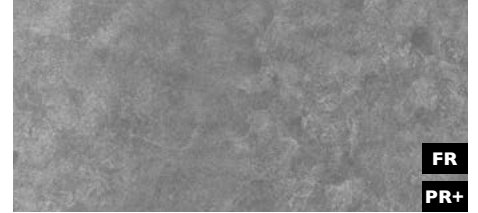
Accessories

SIBUKLE	Spatula AI
---------	------------

Special colors

—

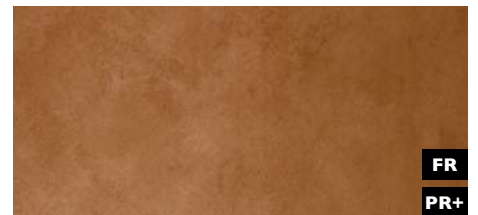




DM Classy Silver AR
2600 x 1000 / **NA** I9326 / **SA** I9337



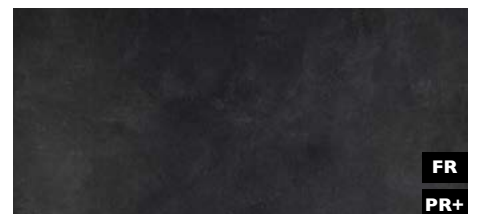
DM Classy Bronze AR
2600 x 1000 / **NA** I9011 / **SA** I9022



DM Classy Copper AR
2600 x 1000 / **NA** I9199 / **SA** I9207



DM Classy Gold AR
2600 x 1000 / **NA** I9010 / **SA** I9021



DM Classy Black AR
2600 x 1000 / **NA** I9325 / **SA** I9336

2600 x 1000



DECO-LINE abrasion-resistant

DM Classy AR

Product characteristics

	NA	SA
Base material	HIPS	
Surface material	Print	
Material thickness mm	1,0	1,13
Temperature stability	up to 60 °C	
Wet room suitability	■■■■□	
Abrasion resistance	■■■■■■■	
Rolled packable	✓	✓

Processing

	NA	SA
Cutting, punching	✓	✓
Drilling	✓	✓
Sawing, milling	✓	—
Laser cutting	✓	✓
Hot bending	—	—
Thermoforming	—	—
PVA compressible	✓	—
Smallest bending radius	150 mm	150 mm

Extra equipment

	NA	SA
Special formats	On request	
Further thicknesses	✓	✓
Cuttings	✓	✓
Magnetic from 3 sheets *	✓	
PVA pre-treatment	✓	—

* Ground must be a SIBU metal foil SA (ref. I7637, self adhesive).

Accessories

SIBUKLE	Spatula A1
---------	------------

Special colors

—



DM Tecido Black

2600 x 1000 / **NA** 21313 / **SA** 21316



DM Tecido Anthracite

2600 x 1000 / **NA** 21314 / **SA** 21317



DM Tecido Silver

2600 x 1000 / **NA** 21315 / **SA** 21318



Photo: by Stefan Röhler modul-a

DECO-LINE

DM Tecido

Product characteristics

	NA	SA
Base material	HIPS	
Surface material	PVC	
Material thickness mm	1,3	1,43
Temperature stability	up to 60 °C	
Wet room suitability	■■■■■	
Abrasion resistance	■■■■□□□	
Rolled packable*	✓	✓

Processing

	NA	SA
Cutting, punching	✓	✓
Drilling	✓	✓
Sawing, milling	✓	—
Laser cutting	—	—
Hot bending	—	—
Thermoforming	✓	—
PVA compressible	✓	—
Smallest bending radius	150 mm	

Extra equipment

	NA	SA
Special formats	On request	
Further thicknesses	✓	✓
Cuttings	✓	✓
Magnetic from 3 sheets **	✓	
PVA pre-treatment	✓	—

Accessories

SIBUKLE	Spatula A1
---------	------------

Special colors

On request

* Design sheets are to be rolled with the patterned side on the inside (applies for both the NA and SA versions). We recommend that not more than 4 sheets be rolled per carton (480 x 480 mm).

** Ground must be a SIBU metal foil SA (ref. 17637, self adhesive).



□
DM MONSOON Vintage Brown



PRS

DM MONSOON Vintage Brown
2600 x 1000 / **NA** 17033 / **SA** 17037

Photo: © Berni - fotolia.com

DECO-LINE

DM MONSOON

2600 x 1000



Product characteristics

	NA	SA
Base material	HIPS	
Surface material	Print	
Material thickness mm	1,0	1,13
Temperature stability	up to 60 °C	
Wet room suitability	■■■■□	
Abrasion resistance	■■■■□□□	
Rolled packable	✓	✓

Processing

	NA	SA
Cutting, punching	✓	✓
Drilling	✓	✓
Sawing, milling	✓	—
Laser cutting	✓	✓
Hot bending	✓	—
Thermoforming	—	—
PVA compressible	✓	—
Smallest bending radius	150 mm	150 mm

Extra equipment

	NA	SA
Special formats	On request	
Further thicknesses	—	—
Cuttings	✓	✓
Magnetic from 3 sheets	✓	
PVA pre-treatment	✓	—

Accessories

SIBUKLE	Spatula A1
---------	------------

Special colors

—



DM LUXURY Silver AR
2600 x 1000 / **NA** 21495 / **SA** 21497



DM LUXURY Bronze AR
2600 x 1000 / **NA** 21487 / **SA** 21488



DM LUXURY Gold AR
2600 x 1000 / **NA** 21391 / **SA** 21392



□ **DM LUXURY Bronze AR**

2600 x 1000



DECO-LINE

DM LUXURY AR

Product characteristics

	NA	SA
Base material	HIPS	
Surface material	Print	
Material thickness mm	1,0	1,13
Temperature stability	up to 60 °C	
Wet room suitability	■■■□	
Abrasion resistance	■■■■■■■	
Rolled packable	✓	✓

Processing

	NA	SA
Cutting, punching	✓	✓
Drilling	✓	✓
Sawing, milling	✓	—
Laser cutting	✓	✓
Hot bending	—	—
Thermoforming	—	—
PVA compressible	✓	—
Smallest bending radius	150 mm	150 mm

Extra equipment

	NA	SA
Special formats	On request	
Further thicknesses	✓	✓
Cuttings	✓	✓
Magnetic from 3 sheets	✓	
PVA pre-treatment	✓	—

Accessories

SIBUKLE	Spatula A1
---------	------------

Special colors

—



□
DM Vintage Copper



FR
PR+

DM Vintage Copper

2600 x 1000 / **NA** 17276 / **SA** 17277



FR
PR+

DM Vintage Silver

2600 x 1000 / **NA** 17274 / **SA** 17275

DECO-LINE

DM Vintage

Product characteristics

	NA	SA
Base material	HIPS	
Surface material	Print	
Material thickness mm	1,0	1,13
Temperature stability	up to 60 °C	
Wet room suitability	■■■■□	
Abrasion resistance	■■■■■■□	
Rolled packable	✓	✓

Processing

	NA	SA
Cutting, punching	✓	✓
Drilling	✓	✓
Sawing, milling	✓	—
Laser cutting	✓	✓
Hot bending	✓	—
Thermoforming	✓	—
PVA compressible	✓	—
Smallest bending radius	150 mm	150 mm

Extra equipment

	NA	SA
Special formats	On request	
Further thicknesses	✓	✓
Cuttings	✓	✓
Magnetic from 3 sheets	✓	
PVA pre-treatment	✓	—

Accessories

SIBUKLE	Spatula A1
---------	------------

Special colors

—

2600 x 1000





PR+*

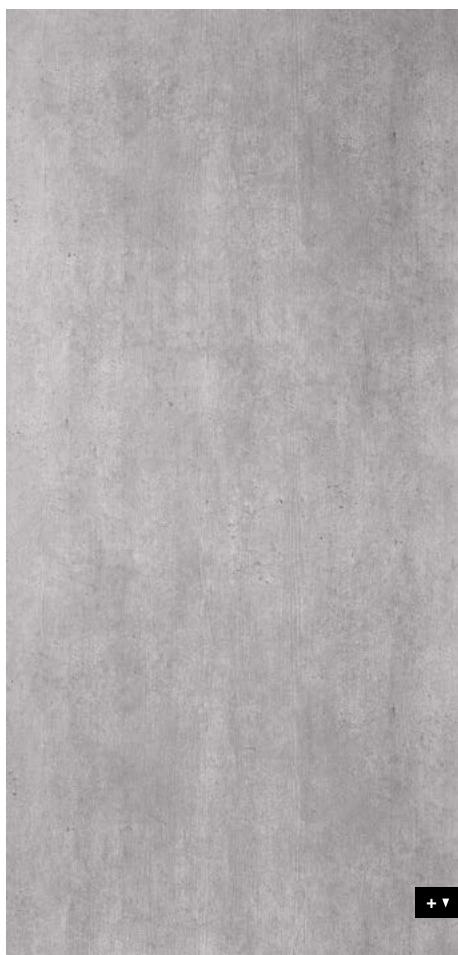
DM CEMENT Light

2600 x 1000 / **NA** I9087 / **SA** I9091



□
DM CEMENT Light

2600 x 1000



DECO-LINE

DM CEMENT Light

Product characteristics

	NA	SA
Base material	HIPS	
Surface material	impregnated paper	
Material thickness mm	1,2	1,33
Temperature stability	up to 60 °C	
Wet room suitability	■■■□	
Abrasion resistance	■■■■■□	
Rolled packable **	✓	✓

Processing

	NA	SA
Cutting, punching	✓	✓
Drilling	✓	✓
Sawing, milling	✓	—
Laser cutting	✓	✓
Hot bending	✓	—
Thermoforming	—	—
PVA compressible	✓	—
Smallest bending radius	150 mm	150 mm

Extra equipment

	NA	SA
Special formats	On request	
Further thicknesses	✓	✓
Cuttings	✓	✓
Magnetic from 3 sheets ***	✓	
PVA pre-treatment	✓	—

Accessories

SIBUKLE	Spatula A1
---------	------------

Special colors

—



DM CEMENT Dark
2600 x 1000 / **NA** 19088 / **SA** 19092

DECO-LINE

DM CEMENT Dark

2600 x 1000

Product characteristics

	NA	SA
Base material	HIPS	
Surface material	impregnated paper	
Material thickness mm	1,3	1,43
Temperature stability	up to 60 °C	
Wet room suitability	■■■■□	
Abrasion resistance	■■■■□□	
Rolled packable **	✓	✓

Processing

	NA	SA
Cutting, punching	✓	✓
Drilling	✓	✓
Sawing, milling	✓	—
Laser cutting	✓	✓
Hot bending	✓	—
Thermoforming	—	—
PVA compressible	✓	—
Smallest bending radius	150 mm	150 mm

Extra equipment

	NA	SA
Special formats	On request	
Further thicknesses	✓	✓
Cuttings	✓	✓
Magnetic from 3 sheets ***	✓	
PVA pre-treatment	✓	—

Accessories

SIBUKLE	Spatula A1
---------	------------

Special colors

—

* Prior to printing a corona or plasma treatment has to be carried out. Upon request available in pre-treated version.
 ** Design sheets are to be rolled with the patterned side on the inside (applies for both the NA and SA versions).
 We recommend that not more than 3 sheets be rolled per carton (480 x 480 mm).
 *** Ground must be a SIBU metal foil SA (ref. 17637, self adhesive).



DM MARBLE White
2600 x 1000 / **NA** I9327 / **SA** I9338

PR+*



□
DM MARBLE White

Photo: © fotolia.com

2600 x 1000



+ ▼

DECO-LINE

DM MARBLE White

Product characteristics

	NA	SA
Base material	HIPS	
Surface material	impregnated paper	
Material thickness mm	1,3	1,43
Temperature stability	up to 60 °C	
Wet room suitability	■■■□	
Abrasion resistance	■■■■■□	
Rolled packable ***	✓	✓

Processing

	NA	SA
Cutting, punching	✓	✓
Drilling	✓	✓
Sawing, milling	✓	—
Laser cutting	✓	✓
Hot bending	✓	—
Thermoforming	—	—
PVA compressible	✓	—
Smallest bending radius	150 mm	150 mm

Extra equipment

	NA	SA
Special formats	On request	
Further thicknesses	✓	✓
Cuttings	✓	✓
Magnetic from 3 sheets ***	✓	
PVA pre-treatment	✓	—

Accessories

SIBUKLE	Spatula A1
---------	------------

Special colors

—



□
DM Travertin

Photo: © fotolia.com



PRS*

DM Travertin
2600 x 1000 / **NA** 19328 / **SA** 19339

DECO-LINE

DM Travertin

2600 x 1000

Product characteristics

	NA	SA
Base material	HIPS	
Surface material	impregnated paper	
Material thickness mm	1,3	1,43
Temperature stability	up to 60 °C	
Wet room suitability	■■■□	
Abrasion resistance	■■■■□□	
Rolled packable **	✓	✓

Processing

	NA	SA
Cutting, punching	✓	✓
Drilling	✓	✓
Sawing, milling	✓	—
Laser cutting	✓	✓
Hot bending	✓	—
Thermoforming	—	—
PVA compressible	✓	—
Smallest bending radius	150 mm	150 mm

Extra equipment

	NA	SA
Special formats	On request	
Further thicknesses	✓	✓
Cuttings	✓	✓
Magnetic from 3 sheets***	✓	
PVA pre-treatment	✓	—

Accessories

SIBUKLE	Spatula A1
---------	------------

Special colors

—

* Prior to printing a corona or plasma treatment has to be carried out. Upon request available in pre-treated version.
 ** Design sheets are to be rolled with the patterned side on the inside (applies for both the NA and SA versions).
 We recommend that not more than 3 sheets be rolled per carton (480 x 480 mm).
 *** Ground must be a SIBU metal foil SA (ref. 17637, self adhesive).



DM Magic White AR

2600 x 1000 / 1 mm / **NA** I5414 / **SA** I5422



DM Magic Black AR

2600 x 1000 / 1 mm / **NA** I5415 / **SA** I5423

2600 x 1000 / 2 mm / **NA** I5417 / **SA** -



DECO-LINE abrasion-resistant

DM Magic AR

Product characteristics

	NA	SA
Base material	HIPS	
Surface material	PET	
Material thickness mm	1,0 / 2,0	1,13 / 2,13
Temperature stability	up to 60 °C	
Wet room suitability	■■■■■	
Abrasion resistance	■■■■■■■	
Rolled packable	✓	✓

Processing

	NA	SA
Cutting, punching	✓	✓
Drilling	✓	✓
Sawing, milling	✓	—
Laser cutting	✓	✓
Hot bending	✓	—
Thermoforming	✓	—
PVA compressible	✓	—
Smallest bending radius	150 mm	150 mm

Extra equipment

	NA	SA
Special formats	On request	
Further thicknesses	✓	✓
Cuttings	✓	✓
Magnetic from 3 sheets	✓	
PVA pre-treatment	✓	—

Accessories

SIBUKLE	Spatula A1
---------	------------

Special colors

On request

□
DM Magic Black matt AR



Photo: Fotolia.com

PRS*

DM Magic White matt AR
2600 x 1000 / **NA** I9517 / **SA** I9521

PRS*

DM Magic Black matt AR
2600 x 1000 / **NA** I9516 / **SA** I9520

DECO-LINE abrasion-resistant

DM Magic matt AR

Product characteristics

	NA	SA
Base material	HIPS	
Surface material	PET	
Material thickness mm	1,0	1,13
Temperature stability	up to 60 °C	
Wet room suitability	■■■■■	
Abrasion resistance	■■■■■■■	
Rolled packable	✓	✓

Processing

	NA	SA
Cutting, punching	✓	✓
Drilling	✓	✓
Sawing, milling	✓	—
Laser cutting	✓	✓
Hot bending	✓	—
Thermoforming	✓	—
PVA compressible	✓	—
Smallest bending radius	150 mm	150 mm

Extra equipment

	NA	SA
Special formats	On request	
Further thicknesses	✓	✓
Cuttings	✓	✓
Magnetic from 3 sheets	✓	
PVA pre-treatment	✓	—

Accessories

SIBUKLE	Spatula A1
---------	------------

Special colors

On request

* Prior to printing a corona or plasma treatment has to be carried out. Upon request available in pre-treated version.

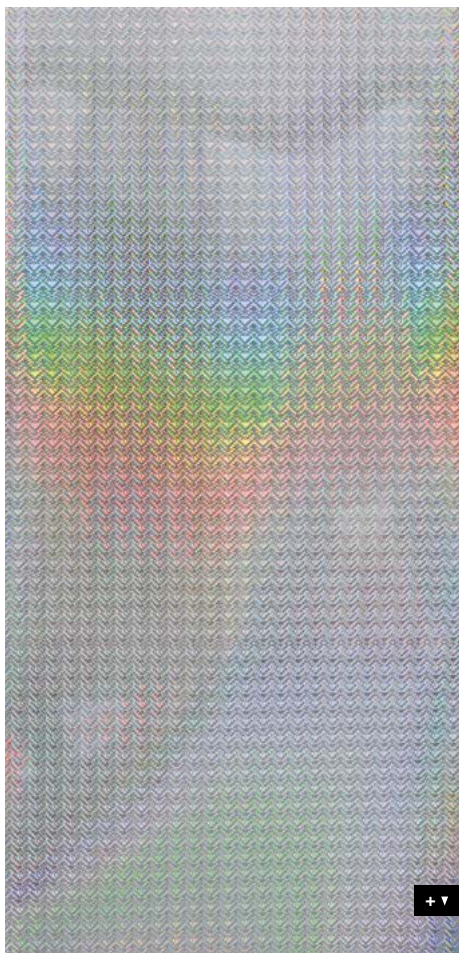


DM Galaxy Silver
2600 x 1000 / **NA** 10169 / **SA** 10175



DM Galaxy Silver

2600 x 1000



DECO-LINE

DM Galaxy

Product characteristics

	NA	SA
Base material	HIPS	
Surface material	Print	
Material thickness mm	1,0	1,13
Temperature stability	up to 60 °C	
Wet room suitability	■■■□	
Abrasion resistance	■■■■■□	
Rolled packable	✓	✓

Processing

	NA	SA
Cutting, punching	✓	✓
Drilling	✓	✓
Sawing, milling	✓	—
Laser cutting	✓	✓
Hot bending	✓	—
Thermoforming	—	—
PVA compressible	✓	—
Smallest bending radius	150 mm	150 mm

Extra equipment

	NA	SA
Special formats	On request	
Further thicknesses	✓	✓
Cuttings	✓	✓
Magnetic from 3 sheets	✓	
PVA pre-treatment	✓	—

Accessories

SIBUKLE	Spatula A1
---------	------------

Special colors

—



Photo: © Barbara Medo



DM Hollywood

2600 x 1000 / **NA** 18433 / **SA** 18442



DM Aqua

2600 x 1000 / **NA** 18424 / **SA** 18443

DECO-LINE

DM Mirror

Product characteristics

	NA	SA
Base material	HIPS	
Surface material	PET	
Material thickness mm	1,0	1,13
Temperature stability	up to 60 °C	
Wet room suitability	■■■■□	
Abrasion resistance	■■■■□□	
Rolled packable	✓	✓

Processing

	NA	SA
Cutting, punching	✓	✓
Drilling	✓	✓
Sawing, milling	✓	—
Laser cutting	✓	✓
Hot bending	✓	—
Thermoforming	✓	—
PVA compressible	✓	—
Smallest bending radius	150 mm	150 mm

Extra equipment

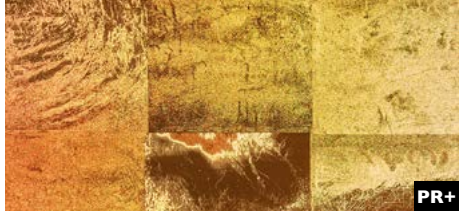
	NA	SA
Special formats	On request	
Further thicknesses	✓	✓
Cuttings	✓	✓
Magnetic from 3 sheets	✓	
PVA pre-treatment	✓	—

Accessories

SIBUKLE	Spatula A1
---------	------------

Special colors

On request



DM LUXURY Holografico
2600 x 1000 / **NA** I9009 / **SA** I9020



Photo: © istock.com

2600 x 1000



DECO-LINE

DM LUXURY Holografico

Product characteristics

	NA	SA
Base material	HIPS	
Surface material	Print	
Material thickness mm	I,0	I,13
Temperature stability	up to 60 °C	
Wet room suitability	■■■□	
Abrasion resistance	■□□□□□	
Rolled packable	✓	✓

Processing

	NA	SA
Cutting, punching	✓	✓
Drilling	✓	✓
Sawing, milling	✓	—
Laser cutting	✓	✓
Hot bending	✓	—
Thermoforming	—	—
PVA compressible	✓	—
Smallest bending radius	150 mm	150 mm

Extra equipment

	NA	SA
Special formats	On request	
Further thicknesses	✓	✓
Cuttings	✓	✓
Magnetic from 3 sheets *	✓	
PVA pre-treatment	✓	—

* Ground must be a SIBU metal foil SA (ref. I7637, self adhesive).

Accessories

SIBUKLE	Spatula A1
---------	------------

Special colors

—



□ DM Smoke PF met



DM Silver PF met
2600 x 1000 / **NA** I0357 / **SA** I0363



DM Smoke PF met
2600 x 1000 / **NA** I0385 / **SA** I0389

DECO-LINE abrasion-resistant

DM PF met

Product characteristics

	NA	SA
Base material	HIPS	
Surface material	Print	
Material thickness mm	1,0	1,13
Temperature stability	up to 60 °C	
Wet room suitability	■■■■■	
Abrasion resistance	■■■■■■■	
Rolled packable	✓	✓

Processing

	NA	SA
Cutting, punching	✓	✓
Drilling	✓	✓
Sawing, milling	✓	—
Laser cutting	✓	✓
Hot bending	✓	—
Thermoforming	✓	—
PVA compressible	✓	—
Smallest bending radius	150 mm	150 mm

Extra equipment

	NA	SA
Special formats	On request	
Further thicknesses	✓	✓
Cuttings	✓	✓
Magnetic from 3 sheets	✓	
PVA pre-treatment	✓	—

Accessories

SIBUKLE	Spatula A1
---------	------------

Special colors

On request



DM OPTICAL MIRROR Silver AR
2800 x 1250 / **NA** 20877



DM OPTICAL MIRROR Fashion Grey AR
2800 x 1250 / **NA** 21244



DM OPTICAL MIRROR Anthracite AR
2800 x 1250 / **NA** 21241



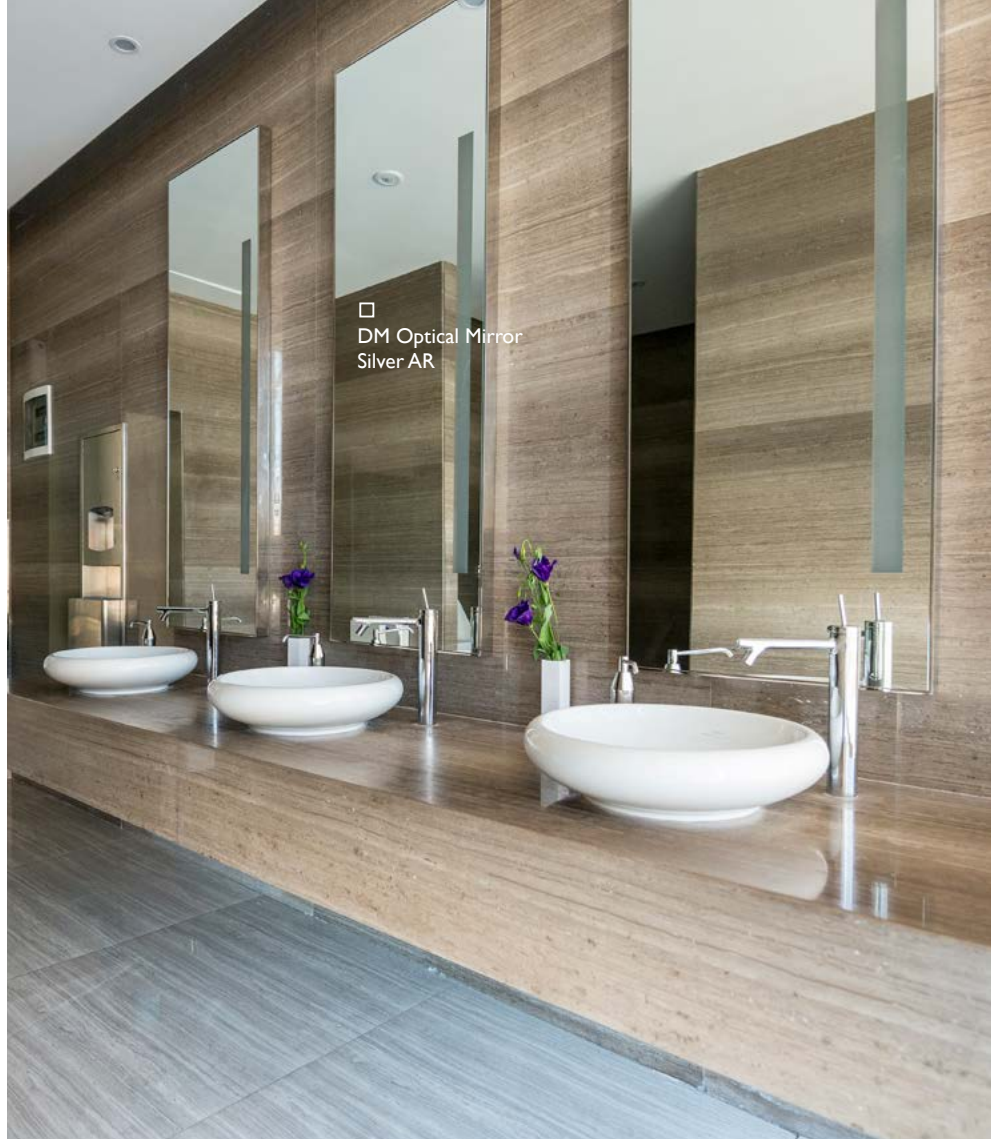
DM OPTICAL MIRROR Brass AR
2800 x 1250 / **NA** 21242



DM OPTICAL MIRROR Gold AR
2800 x 1250 / **NA** 21243



DM OPTICAL MIRROR Copper AR
2800 x 1250 / **NA** 21245



DECO-LINE

abrasion-resistant

DM Optical Mirror AR

Product characteristics

	NA
Base material	HIPS
Surface material	PET
Material thickness mm	1,0
Temperature stability	up to 60 °C
Wet room suitability	■■■■□
Abrasion resistance	■■■■■■■
Rolled packable	✓

Processing

	NA
Cutting, punching	✓
Drilling	✓
Sawing, milling	✓
Laser cutting	✓
Hot bending	✓
Thermoforming	✓
PVA compressible	✓
Smallest bending radius	150 mm

Extra equipment

	NA
Special formats	On request
Further thicknesses	✓
Cuttings	✓
Magnetic from 3 sheets	—
PVA pre-treatment	✓

Accessories

SIBUKLE	—
---------	---

Special colors

—



DM Silver H23

2600 x 1000 / 1 mm / **NA** 11852 / **SA** 11660

2000 x 1000 / 1 mm / **NA** 11656 / **SA** 11755

2000 x 1000 / 2 mm / **NA** 12117 / **SA** 11853

Photo: BOFFO New York

DECO-LINE

DM Mirror

Product characteristics

	NA	SA
Base material	HIPS	
Surface material	PET	
Material thickness mm	1,0 / 2,0	1,13 / 2,13
Temperature stability	up to 60 °C	
Wet room suitability	■■■■□	
Abrasion resistance	■■□□□□	
Rolled packable	✓	✓

Processing

	NA	SA
Cutting, punching	✓	✓
Drilling	✓	✓
Sawing, milling	✓	—
Laser cutting	✓	✓
Hot bending	✓	—
Thermoforming	✓	—
PVA compressible	✓	—
Smallest bending radius	150 mm	150 mm

Extra equipment

	NA	SA
Special formats	On request	
Further thicknesses	✓	✓
Cuttings	✓	✓
Magnetic from 3 sheets	✓	
PVA pre-treatment	✓	—

Accessories

SIBUKLE	Spatula A1
---------	------------

Special colors

—



FR
PR+

DM Silver

2600 x 1000 / 1 mm / **NA** 10312 / **SA** 10324
2000 x 1000 / 1 mm / **NA** 10304 / **SA** 10322
2000 x 1000 / 2 mm / **NA** 12114 / **SA** 10323



FR
PR+

DM Silver/White

2000 x 1000 / 1 mm / **NA** 10372 / **SA** 10381



DECO-LINE

DM Mirror

Product characteristics

	NA	SA
Base material	HIPS	
Surface material	PET	
Material thickness mm	1,0 / 2,0	1,13 / 2,13
Temperature stability	up to 60 °C	
Wet room suitability	■■■■□	
Abrasion resistance	■■■■□□	
Rolled packable	✓	✓

Processing

	NA	SA
Cutting, punching	✓	✓
Drilling	✓	✓
Sawing, milling	✓	—
Laser cutting	✓	✓
Hot bending	✓	—
Thermoforming	✓	—
PVA compressible	✓	—
Smallest bending radius	150 mm	150 mm

Extra equipment

	NA	SA
Special formats	On request	
Further thicknesses	✓	✓
Cuttings	✓	✓
Magnetic from 3 sheets	✓	
PVA pre-treatment	✓	—

Accessories

SIBUKLE	Spatula A1
---------	------------

Special colors

On request



DM Silver MMS
2600 x 1000 / **NA** 20499 / **SA** 20501



DM Gold MMS
2600 x 1000 / **NA** 20500 / **SA** 20502

DECO-LINE

DM Mirror MMS

Product characteristics

	NA	SA
Base material	HIPS	
Surface material	Print	
Material thickness mm	1,0	1,13
Temperature stability	up to 60 °C	
Wet room suitability	■■■■□	
Abrasion resistance	■■■■□□□	
Rolled packable	✓	✓

Processing

	NA	SA
Cutting, punching	✓	✓
Drilling	✓	✓
Sawing, milling	✓	—
Laser cutting	✓	✓
Hot bending	✓	—
Thermoforming	—	—
PVA compressible	✓	—
Smallest bending radius	150 mm	150 mm

Extra equipment

	NA	SA
Special formats	On request	
Further thicknesses	✓	✓
Cuttings	✓	✓
Magnetic from 3 sheets	✓	
PVA pre-treatment	✓	—

Accessories

SIBUKLE	Spatula A1
---------	------------

Special colors

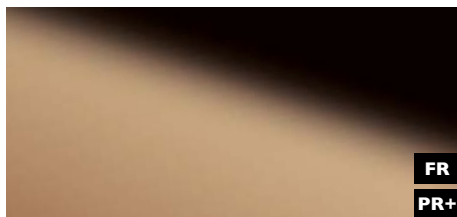
On request



FR
PR+

DM Gold AR

2600 x 1000 / **NA** I0181 / **SA** I0187
2000 x 1000 / **NA** I0178 / **SA** I0186



FR
PR+

DM Rosegold AR

2600 x 1000 / **NA** 20955 / **SA** 20956



FR
PR+

DM Brass AR

2600 x 1000 / **NA** I0135 / **SA** I0139



□
DM Gold AR

DECO-LINE abrasion-resistant

DM Mirror AR

Product characteristics

	NA	SA
Base material	HIPS	
Surface material	PET	
Material thickness mm	1,0	1,13
Temperature stability	up to 60 °C	
Wet room suitability	■■■□	
Abrasion resistance	■■■■■■■	
Rolled packable	✓	✓

Processing

	NA	SA
Cutting, punching	✓	✓
Drilling	✓	✓
Sawing, milling	✓	—
Laser cutting	✓	✓
Hot bending	✓	—
Thermoforming	✓	—
PVA compressible	✓	—
Smallest bending radius	150 mm	150 mm

Extra equipment

	NA	SA
Special formats	On request	
Further thicknesses	✓	✓
Cuttings	✓	✓
Magnetic from 3 sheets	✓	
PVA pre-treatment	✓	—

Accessories

SIBUKLE	Spatula AI
---------	------------

Special colors

—



□
DM Gold AR



DM Anthracite AR

2600 x 1000 / **NA** I0120 / **SA** I0125



DM Copper AR

2600 x 1000 / **NA** I7272 / **SA** I7273



DM Brown AR

2600 x 1000 / **NA** I0147 / **SA** I0150



DM Rose AR

2600 x 1000 / **NA** I0271 / **SA** I2428



DM Iceblue AR

2600 x 1000 / **NA** I0204 / **SA** I0210



DM Fashion Grey AR

2600 x 1000 / **NA** I3808 / **SA** I3810



DM Rose AR

Photo: © Form Factory

DECO-LINE

abrasion-resistant

DM Mirror AR

Product characteristics

	NA	SA
Base material	HIPS	
Surface material	PET	
Material thickness mm	I,0	I,13
Temperature stability	up to 60 °C	
Wet room suitability	■■■■□	
Abrasion resistance	■■■■■■■	
Rolled packable	✓	✓

Processing

	NA	SA
Cutting, punching	✓	✓
Drilling	✓	✓
Sawing, milling	✓	—
Laser cutting	✓	✓
Hot bending	✓	—
Thermoforming	✓	—
PVA compressible	✓	—
Smallest bending radius	150 mm	150 mm

Extra equipment

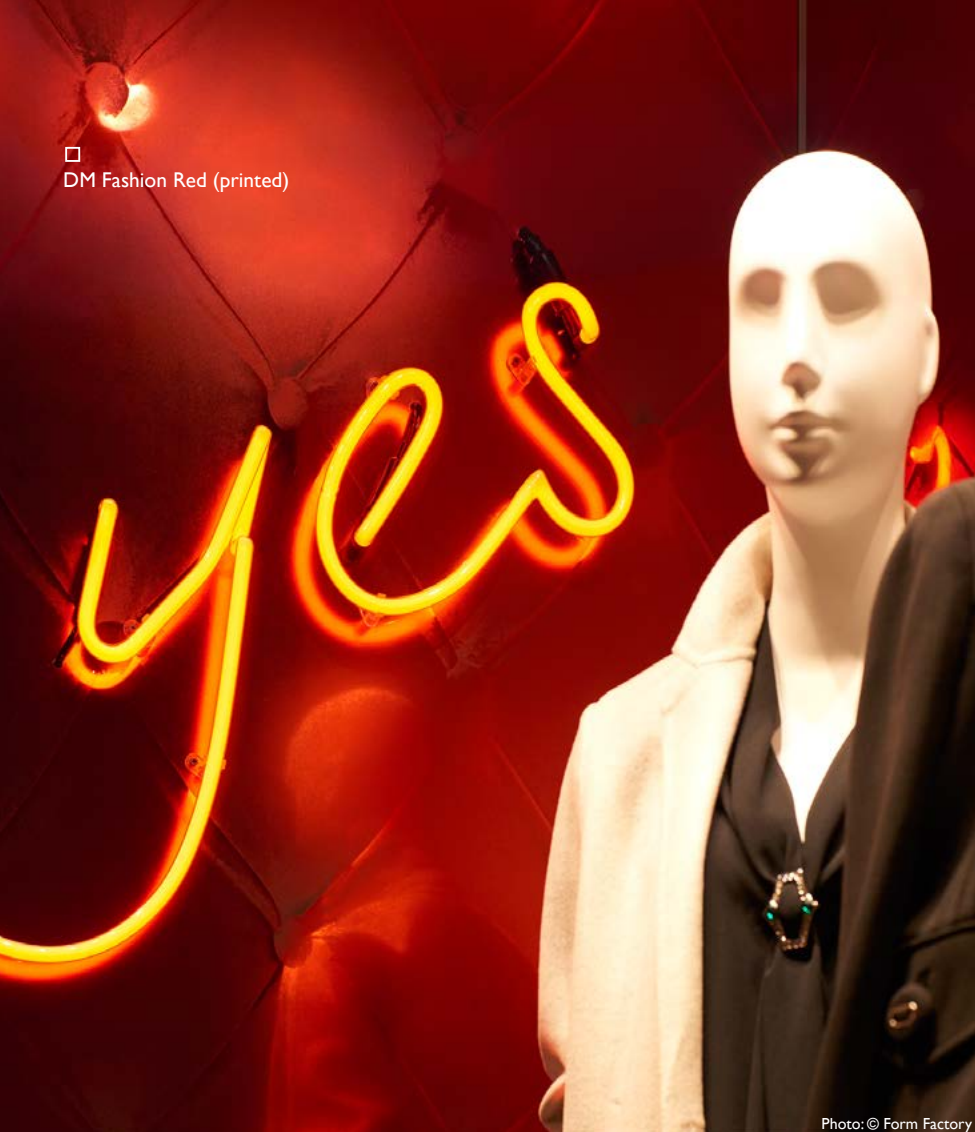
	NA	SA
Special formats	On request	
Further thicknesses	✓	✓
Cuttings	✓	✓
Magnetic from 3 sheets	✓	
PVA pre-treatment	✓	—

Accessories

SIBUKLE	Spatula A1
---------	------------

Special colors

—



□
DM Fashion Red (printed)

Photo: © Form Factory



DM Bronze
2600 x 1000 / **NA** I0143 / **SA** I5275



DM Champagne
2600 x 1000 / **NA** I2416 / **SA** I2430



DM Gold 30
2600 x 1000 / **NA** I0222/ **SA** I1504



DM Fashion Red
2600 x 1000 / **NA** I0213 / **SA** I3807

DECO-LINE

DM Mirror

Product characteristics

	NA	SA
Base material	HIPS	
Surface material	PET	
Material thickness mm	I,0	I,13
Temperature stability	up to 60 °C	
Wet room suitability	■■■■□	
Abrasion resistance	■■■■■□□	
Rolled packable	✓	✓

Processing

	NA	SA
Cutting, punching	✓	✓
Drilling	✓	✓
Sawing, milling	✓	—
Laser cutting	✓	✓
Hot bending	✓	—
Thermoforming	✓	—
PVA compressible	✓	—
Smallest bending radius	I50 mm	I50 mm

Extra equipment

	NA	SA
Special formats	On request	
Further thicknesses	✓	✓
Cuttings	✓	✓
Magnetic from 3 sheets	✓	
PVA pre-treatment	✓	—

Accessories

SIBUKLE	Spatula A1
---------	------------

Special colors

—



FR

DM Brass brushed matt AR
2600 x 1000 / **NA** I5290 / **SA** I5298



FR

DM Gold brushed matt AR
2600 x 1000 / **NA** I5291 / **SA** I5299



□
DM Gold
brushed matt AR

DECO-LINE

abrasion-resistant

DM Brushed matt

2600 x 1000



+ ▼

Product characteristics

	NA	SA
Base material	HIPS	
Surface material	PET	
Material thickness mm	I,0	I,13
Temperature stability	up to 60 °C	
Wet room suitability	■■■□	
Abrasion resistance	■■■■■■■	
Rolled packable	✓	✓

Processing

	NA	SA
Cutting, punching	✓	✓
Drilling	✓	✓
Sawing, milling	✓	—
Laser cutting	✓	✓
Hot bending	✓	—
Thermoforming	✓	—
PVA compressible	✓	—
Smallest bending radius	150 mm	150 mm

Extra equipment

	NA	SA
Special formats	On request	
Further thicknesses	✓	✓
Cuttings	✓	✓
Magnetic from 3 sheets	✓	
PVA pre-treatment	✓	—

Accessories

SIBUKLE	Spatula A1
---------	------------

Special colors

—



□ DM Silver brushed



FR

PR+

DM Silver brushed

2600 x 1000 / **NA** 10291 / **SA** 10298

2000 x 1000 / **NA** 10286 / **SA** 10296



FR

PRS

DM HGS

2600 x 1000 / **NA** 10193 / **SA** 10199



FR

PRS

DM Champagne brushed

2600 x 1000 / **NA** 12417 / **SA** 12433



FR

PRS

DM Titan brushed

2600 x 1000 / **NA** 12285 / **SA** 12431



FR

PRS

DM Copper brushed

2600 x 1000 / **NA** 12418 / **SA** 12432

2600 x 1000



+ ▼

DECO-LINE abrasion-resistant

DM Brushed

Product characteristics

	NA	SA
Base material	HIPS	
Surface material	PET	
Material thickness mm	1,0	1,13
Temperature stability	up to 60 °C	
Wet room suitability	■■■■□	
Abrasion resistance	■■■■■■■	
Abrasion resistance DM Silver brushed	■■■■■■□	
Rolled packable	✓	✓

Processing

	NA	SA
Cutting, punching	✓	✓
Drilling	✓	✓
Sawing, milling	✓	—
Laser cutting	✓	✓
Hot bending	✓	—
Thermoforming	✓	—
PVA compressible	✓	—
Smallest bending radius	150 mm	150 mm

Extra equipment

	NA	SA
Special formats	On request	
Further thicknesses	✓	✓
Cuttings	✓	✓
Magnetic from 3 sheets	✓	
PVA pre-treatment	✓	—

Accessories

SIBUKLE	Spatula A1
---------	------------

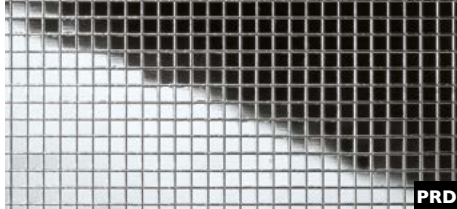
Special colors

—

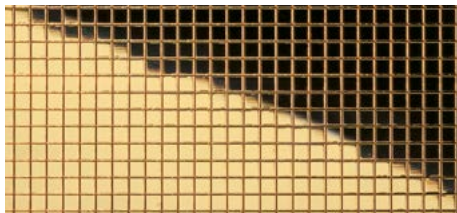


MULTISTYLE

SIBU | DESIGN
we decorate.



MS Silver 3x3 flex. Classic
980 x 980 / SA 10650



MS Gold AR 3x3 flex. Classic
980 x 980 / SA 10592



MULTISTYLE

MS 3x3 / 3x6

Product characteristics

	SA
Base material	HIPS
Surface material	PET
Material thickness mm	1,2
Temperature stability	up to 50 °C
Wet room suitability	■■■□
Abrasion resistance	■■■■□□
Abrasion resistance MS Gold AR	■■■■■■
Rolled packable	✓

Processing

	SA
Cutting, punching	✓
Drilling	✓
Sawing, milling	—
Laser cutting	✓
Hot bending	—
PVA compressible	—

Extra equipment

	SA
Special formats	—
Further thicknesses	—
Cuttings	✓
Magnetic from 3 sheets	✓
PVA pre-treatment	—

Accessories

SIBUKLE	Spatula AI
---------	------------

Special colors

On request

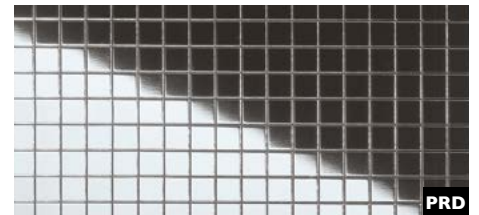


□ MS Gold AR 5x5 flex. Classic

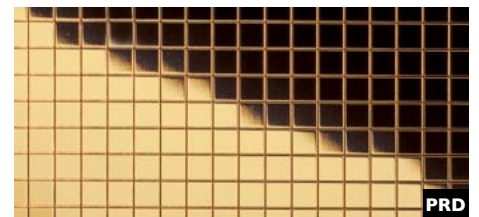
Photo: TENN X KAREN MILLEN



MS Hollywood 5x5 flex. Classic
980 x 980 / SA 18436



MS Silver 5x5 flex. Classic
980 x 980 / SA 10657



MS Gold AR 5x5 flex. Classic
980 x 980 / SA 10598

MULTISTYLE MS 5x5

Product characteristics

	SA
Base material	HIPS
Surface material	PET
Material thickness mm	1,2
Temperature stability	up to 50 °C
Wet room suitability	■■■■□
Abrasion resistance	■■■■□□
Abrasion resistance MS Gold AR	■■■■■■■
Rolled packable	✓

Extra equipment

	SA
Special formats	✓
Maximum length mm	3000
Maximum width mm	1000
Further thicknesses	—
Cuttings	✓
Magnetic from 3 sheets	✓
PVA pre-treatment	—

Processing

	SA
Cutting, punching	✓
Drilling	✓
Sawing, milling	—
Laser cutting	✓
Hot bending	—
PVA compressible	—

Accessories

SIBUKLE	Spatula A1
---------	------------

Special colors

On request



MS Galaxy Silver 5x5 flex. Classic
980 x 980 / SA 10575



□ MS Galaxy Silver 5x5 flex. Classic

MULTISTYLE MS 5x5

Product characteristics

	SA
Base material	HIPS
Surface material	Print
Material thickness mm	1,2
Temperature stability	up to 50 °C
Wet room suitability	■■■□
Abrasion resistance	■■■■■□
Rolled packable	✓

Processing

	SA
Cutting, punching	✓
Drilling	✓
Sawing, milling	—
Laser cutting	✓
Hot bending	—
PVA compressible	—

Extra equipment

	SA
Special formats	✓
Maximum length mm	3000
Maximum width mm	1000
Further thicknesses	—
Cuttings	✓
Magnetic from 3 sheets	✓
PVA pre-treatment	—

Accessories

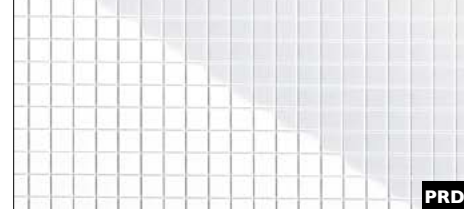
SIBUKLE	Spatula AI
---------	------------

Special colors

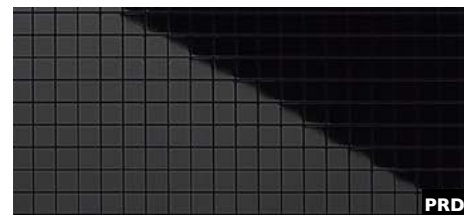
—



□ MS Magic Black 5x5 flex. Classic



MS Magic White 5x5 flex. Classic
980 x 980 / SA 13476



MS Magic Black 5x5 flex. Classic
980 x 980 / SA 13476

MULTISTYLE MS 5x5

Product characteristics

	SA
Base material	HIPS
Surface material	PET
Material thickness mm	1,2
Temperature stability	up to 50 °C
Wet room suitability	■■■■■
Abrasion resistance	■■■■■□□
Rolled packable	✓

Extra equipment

	SA
Special formats	✓
Maximum length mm	3000
Maximum width mm	1000
Further thicknesses	—
Cuttings	✓
Magnetic from 3 sheets	✓
PVA pre-treatment	—
Abrasion resistance	■■■■■■■

Processing

	SA
Cutting, punching	✓
Drilling	✓
Sawing, milling	—
Laser cutting	✓
Hot bending	—
PVA compressible	—

Accessories

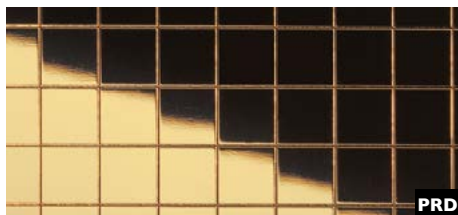
SIBUKLE	Spatula A1
---------	------------

Special colors

On request



MS Silver 10x10 flex. Classic
980 x 980 / SA 10639



MS Gold AR 10x10 flex. Classic
980 x 980 / SA 10581



MS Silver 20x20 flex. Classic
980 x 980 / SA 10644



MS Gold AR 20x20 flex. Classic
980 x 980 / SA 10582



MS Silver 20x20 flex. Classic

MS Silver 10x10 flex. Classic

Photo: Malo Clinic at El Corte Ingles – Lisboa

MULTISTYLE

MS 10x10 / 20x20

Product characteristics

	SA
Base material	HIPS
Surface material	PET
Material thickness mm	1,2
Temperature stability	up to 50 °C
Wet room suitability	■■■□
Abrasion resistance	■■■■□□
Abrasion resistance MS Gold AR	■■■■■■
Rolled packable	✓

Extra equipment

	SA
Special formats	✓
Maximum length mm	3000
Maximum width mm	1000
Further thicknesses	—
Cuttings	✓
Magnetic from 3 sheets	✓
PVA pre-treatment	—

Processing

	SA
Cutting, punching	✓
Drilling	✓
Sawing, milling	—
Laser cutting	✓
Hot bending	—
PVA compressible	—

Accessories

SIBUKLE	Spatula AI
---------	------------

Special colors

On request



MSC Silver 10x10 flex. Classic
2600 x 1000 / **SA** 14239



MSC Silver 30x30 flex. Classic
2600 x 1000 / **SA** 14279

Photo: Spacetekusa

MULTISTYLE

MSC 10x10 / 30x30

2600 x 1000

Product characteristics

	SA
Base material	HIPS
Surface material	PET
Material thickness mm	1,2
Temperature stability	up to 50 °C
Wet room suitability	■■■□
Abrasion resistance	■■■■□□
Rolled packable	✓

Extra equipment

	SA
Special formats	✓
Maximum length mm	3000
Maximum width mm	1000
Further thicknesses	—
Cuttings	✓
Magnetic from 3 sheets	✓
PVA pre-treatment	—

Processing

	SA
Cutting, punching	✓
Drilling	✓
Sawing, milling	—
Laser cutting	✓
Hot bending	—
PVA compressible	—

Accessories

SIBUKLE	Spatula Al
---------	------------

Special colors

On request



STRUCTURE-LINE

SIBU | DESIGN
we decorate.



SL CRASHED Old Platin
2600 x 1000 / **NA** 19519 / **SA** 19523



Photo: © fotolia.com

2600 x 1000



STRUCTURE-LINE

SL CRASHED Old Platin

Product characteristics

	NA	SA
Base material	HIPS	
Surface material	Print	
Material thickness mm	1,0	1,13
Max. relief height mm	2,8	3,04
Temperature stability	up to 60 °C	
Wet room suitability	■■■■□	
Abrasion resistance	■■■■■□	
Rolled packable	✓	✓

Processing

	NA	SA
Cutting, punching	✓	✓
Drilling	✓	✓
Sawing, milling	✓	—
Laser cutting	✓	✓
Hot bending	✓	—
PVA compressible	✓	—
Smallest bending radius	150 mm	150 mm

Extra equipment

	NA	SA
Special formats	—	—
Further thicknesses	—	—
Cuttings	✓	✓
Magnetic from 3 sheets *	✓	
PVA pre-treatment	✓	—

Accessories

SIBUKLE	Spatula A2
---------	------------

Special colors

On request

* Ground must be a SIBU metal foil SA (ref. 17637, self adhesive).



□
SL CRASHED
Mirror Silver



FR
PRD

SL CRASHED Mirror Silver
2600 x 1000 / **NA** I9335 / **SA** I9346

Photo: © fotolia.com

STRUCTURE-LINE

SL CRASHED Mirror

2600 x 1000



Product characteristics

	NA	SA
Base material	HIPS	
Surface material	PET	
Material thickness mm	1,0	1,13
Max. relief height mm	2,4	2,64
Temperature stability	up to 60 °C	
Wet room suitability	■■■■□	
Abrasion resistance	■■■■□□	
Rolled packable	✓	✓

Processing

	NA	SA
Cutting, punching	✓	✓
Drilling	✓	✓
Sawing, milling	✓	—
Laser cutting	✓	✓
Hot bending	✓	—
PVA compressible	✓	—
Smallest bending radius	150 mm	150 mm

Extra equipment

	NA	SA
Special formats	—	
Further thicknesses	—	—
Cuttings	✓	✓
Magnetic from 3 sheets *	✓	
PVA pre-treatment	✓	—

* Ground must be a SIBU metal foil SA (ref. I7637, self adhesive).

Accessories

SIBUKLE	Spatula A2
---------	------------

Special colors

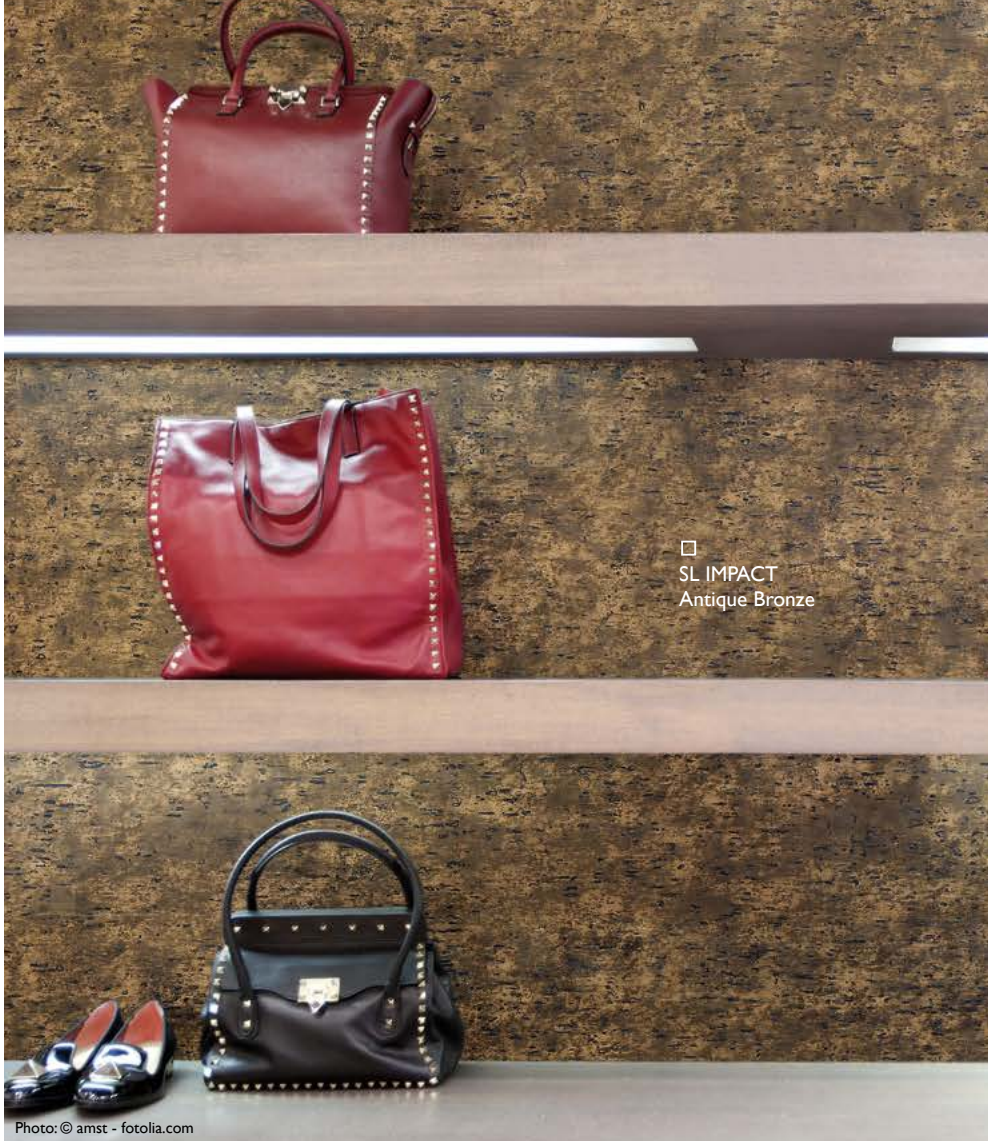
On request



SL IMPACT Vintage Silver
2600 x 1000 / **NA** I7230 / **SA** I7231



SL IMPACT Antique Bronze
2600 x 1000 / **NA** I7232 / **SA** I7233



□ SL IMPACT
Antique Bronze

Photo: © amst - fotolia.com

2600 x 1000



STRUCTURE-LINE SL IMPACT

Product characteristics

	NA	SA
Base material	HIPS	
Surface material	Print	
Material thickness mm	I,0	I,13
Max. relief height mm	I,6	I,73
Temperature stability	up to 60 °C	
Wet room suitability	■■■■□	
Abrasion resistance	■■■■■□	
Rolled packable	✓	✓

Processing

	NA	SA
Cutting, punching	✓	✓
Drilling	✓	✓
Sawing, milling	✓	—
Laser cutting	✓	✓
Hot bending	✓	—
PVA compressible	✓	—
Smallest bending radius	150 mm	150 mm

Extra equipment

	NA	SA
Special formats	—	—
Further thicknesses	—	—
Cuttings	✓	✓
Magnetic from 3 sheets	✓	
PVA pre-treatment	✓	—

Accessories

SIBUKLE	Spatula A2
---------	------------

Special colors

On request

□ SL IMPACT Vintage Silver





FR
PRD

SL LAVA Copper

2600 x 1000 / **NA** 14786 / **SA** 14805



2600 x 1000



STRUCTURE-LINE

SL LAVA

Product characteristics

	NA	SA
Base material	HIPS	
Surface material	Print	
Material thickness mm	1,0	1,25
Max. relief height mm	2,1	2,35
Temperature stability	up to 60 °C	
Wet room suitability	■■■■□	
Abrasion resistance	■■■■■□	
Rolled packable	✓	✓

Processing

	NA	SA
Cutting, punching	✓	✓
Drilling	✓	✓
Sawing, milling	✓	—
Laser cutting	✓	✓
Hot bending	✓	—
PVA compressible	✓	—
Smallest bending radius	150 mm	150 mm

Extra equipment

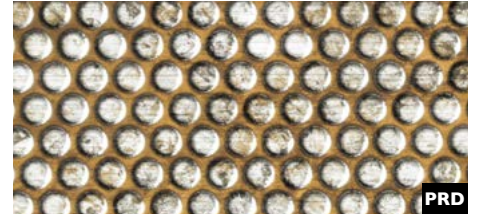
	NA	SA
Special formats	—	—
Further thicknesses	—	—
Cuttings	✓	✓
Magnetic from 3 sheets	✓	
PVA pre-treatment	✓	—

Accessories

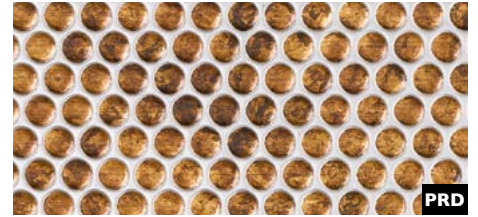
SIBUKLE	Spatula A2
---------	------------

Special colors

On request



SL RACE Vintage Silver/Bronze
2600 x 1000 / **NA** 17242 / **SA** 17243



SL RACE Vintage Copper/Silver
2600 x 1000 / **NA** 17240 / **SA** 17241

Photo Wilhelm Rädinger

STRUCTURE-LINE SL RACE

Product characteristics

	NA	SA
Base material	HIPS	
Surface material	Print	
Material thickness mm	1,0	1,13
Max. relief height mm	1,7	1,83
Temperature stability	up to 60 °C	
Wet room suitability	■■■■□	
Abrasion resistance	■■■■□□□	
Rolled packable	✓	✓

Processing

	NA	SA
Cutting, punching	✓	✓
Drilling	✓	✓
Sawing, milling	✓	—
Laser cutting	✓	✓
Hot bending	✓	—
PVA compressible	✓	—
Smallest bending radius	150 mm	150 mm

Extra equipment

	NA	SA
Special formats	—	—
Further thicknesses	—	—
Cuttings	✓	✓
Magnetic from 3 sheets	✓	
PVA pre-treatment	✓	—

Accessories

SIBUKLE	Spatula A2
---------	------------

Special colors

On request

2600 x 1000





SL CROCO Silver PF met/Silver
2600 x 1000 / **NA** I3410 / **SA** I3520

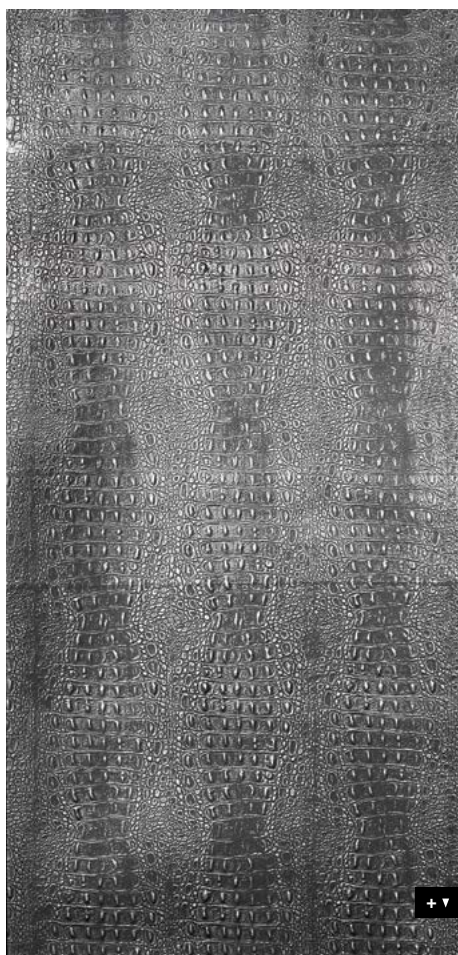


SL CROCO Smoke PF met/Silver
2600 x 1000 / **NA** I3411 / **SA** I3521



Photo: secetenendrinken.nl

2600 x 1000



STRUCTURE-LINE

SL CROCO

Product characteristics

	NA	SA
Base material	HIPS	
Surface material	Print	
Material thickness mm	1,0	1,25
Max. relief height mm	2,6	2,85
Temperature stability	up to 60 °C	
Wet room suitability	■■■□	
Abrasion resistance	■■■■□□	
Rolled packable	✓	✓

Processing

	NA	SA
Cutting, punching	✓	✓
Drilling	✓	✓
Sawing, milling	✓	—
Laser cutting	✓	✓
Hot bending	✓	—
PVA compressible	✓	—
Smallest bending radius	150 mm	150 mm

Extra equipment

	NA	SA
Special formats	—	—
Further thicknesses	—	—
Cuttings	✓	✓
Magnetic from 3 sheets	✓	
PVA pre-treatment	✓ *	—

Accessories

SIBUKLE	Spatula A2
---------	------------

Special colors

On request

* except Smoke PF met



SL SQUARE 3 HGS
2600 x 1000 / 1,7 mm / **NA** 11272 / **SA** 11273

STRUCTURE-LINE

SL SQUARE 3

Product characteristics

	NA	SA
Base material	HIPS	
Surface material	PET	
Material thickness mm	1,0	1,13
Max. relief height mm	1,7 / 2,0	1,83 / 2,13
Temperature stability	up to 60 °C	
Wet room suitability	■■■■□	
Abrasion resistance	■■■■■■■	
Rolled packable	✓	✓

Processing

	NA	SA
Cutting, punching	✓	✓
Drilling	✓	✓
Sawing, milling	✓	—
Laser cutting	✓	✓
Hot bending	✓	—
PVA compressible	✓	—
Smallest bending radius	150 mm	150 mm

Extra equipment

	NA	SA
Special formats	—	
Further thicknesses	—	—
Cuttings	✓	✓
Magnetic from 3 sheets	✓	
PVA pre-treatment	✓	—

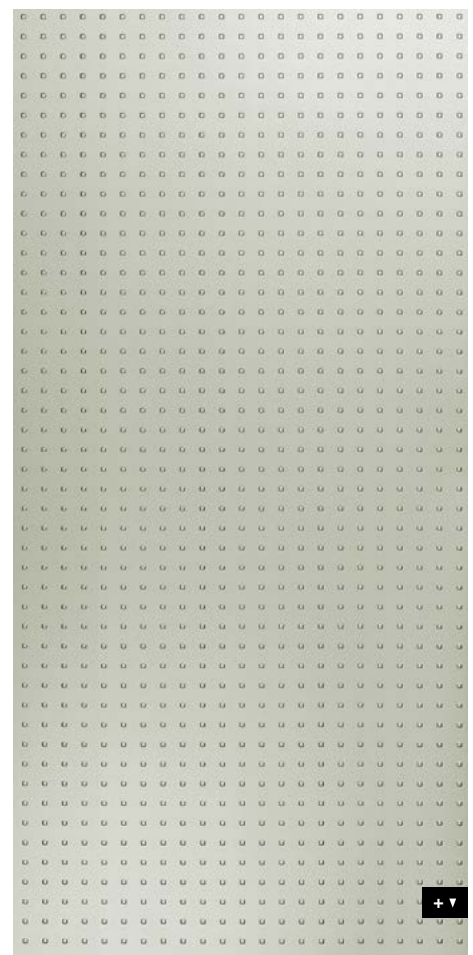
Accessories

SIBUKLE	Spatula A2
---------	------------

Special colors

On request

2600 x 1000





ACRYLIC-LINE

SIBU | DESIGN
we decorate.



AC MOTION ONE White
2600 x 1000 / **NA** I5933 / **SA** I5953



AC MOTION ONE Black
2600 x 1000 / **NA** I5936 / **SA** I5956



□
AC MOTION ONE Black

2600 x 1000

ACRYLIC-LINE

abrasion-resistant

AC MOTION ONE

Product characteristics

	NA	SA
Base material	ABS	
Surface material	PMMA	
Material thickness mm	0,7	0,83
Max. relief height mm	1,1	1,23
Temperature stability	up to 60 °C	
Wet room suitability	■■■■■	
Abrasion resistance	■■■■■□	
Rolled packable	✓	✓

Processing

	NA	SA
Cutting, punching	✓	✓
Drilling	✓	✓
Sawing, milling	✓	—
Laser cutting	✓	✓
Hot bending	✓	—
PVA compressible	✓	—
Smallest bending radius	150 mm	150 mm

Accessories

SIBUKLE	Spatula A2
Politur-Kit	available
Farbgleiche Kanten	available

Extra equipment

	NA	SA
Special formats	On request	
Further thicknesses	—	—
Cuttings	✓	✓
Magnetic from 3 sheets	✓	
PVA pre-treatment	✓	—

Special colors

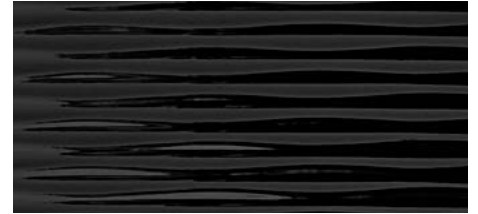
On request



Photo: GARANTküche



AC MOTION TWO White
2600 x 1000 / **NA** I5755 / **SA** I5764



AC MOTION TWO Black
2600 x 1000 / **NA** I5754 / **SA** I5763

ACRYLIC-LINE

abrasion-resistant

AC MOTION TWO

Product characteristics

	NA	SA
Base material	ABS	
Surface material	PMMA	
Material thickness mm	0,7	0,83
Max. relief height mm	1,1	1,23
Temperature stability	up to 60 °C	
Wet room suitability	■■■■■	
Abrasion resistance	■■■■■□	
Rolled packable	✓	✓

Extra equipment

	NA	SA
Special formats	On request	
Further thicknesses	—	—
Cuttings	✓	✓
Magnetic from 3 sheets	✓	
PVA pre-treatment	✓	—

Processing

	NA	SA
Cutting, punching	✓	✓
Drilling	✓	✓
Sawing, milling	✓	—
Laser cutting	✓	✓
Hot bending	✓	—
PVA compressible	✓	—
Smallest bending radius	150 mm	150 mm

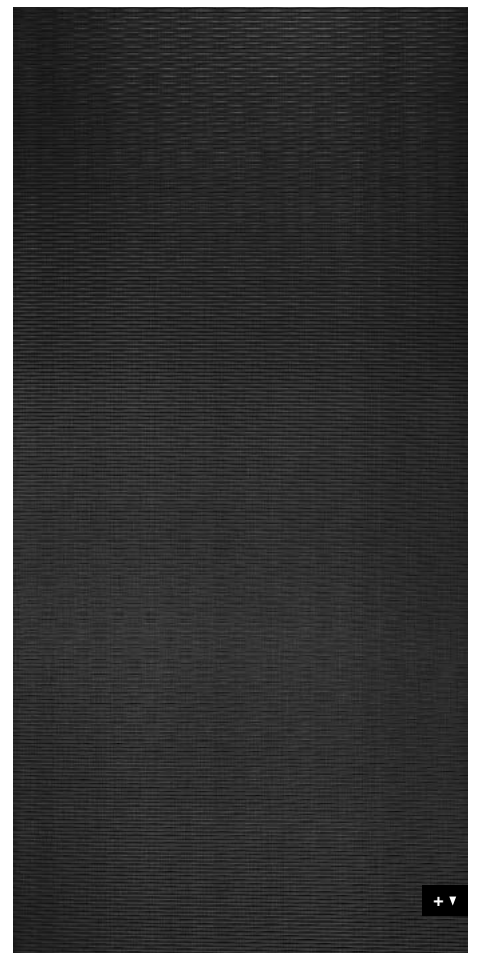
Accessories

SIBUKLE	Spatula A2
Politur-Kit	available
Farbgleiche Kanten	available

Special colors

On request

2600 x 1000





TRANSLUCENT-LINE

SIBU | DESIGN
we decorate.



TL LINEA 104x62 Old Platin
2600 x 1000 / **NA** 18434 / **SA** 18607



TL LINEA 104x62 Silent Gold
2600 x 1000 / **NA** 18605 / **SA** 18606



TL LINEA
104 x 62 Silent Gold

Photo: Ariadna de Raadt

2600 x 1000



TRANSLUCENT-LINE

TL LINEA

Product characteristics

	NA	SA
Base material	HIPS	
Surface material	Print	
Material thickness mm	1,5	1,63
Temperature stability	up to 60 °C	
Wet room suitability	■■■□	
Abrasion resistance	■■■■■□	
Rolled packable	✓	✓

Processing

	NA	SA
Cutting, punching	✓	✓
Drilling	✓	✓
Sawing, milling	✓	—
Laser cutting	✓	✓
Hot bending	✓	—
PVA compressible	—	—
Smallest bending radius	240 mm	240 mm

Extra equipment

	NA	SA
Special formats	On request	
Further thicknesses	—	—
Cuttings	✓	✓
Magnetic	—	
PVA pre-treatment	—	—

Accessories

SIBUKLE	—
---------	---

Special colors

On request



□
TL LINEA
104 x 62 Old Platin

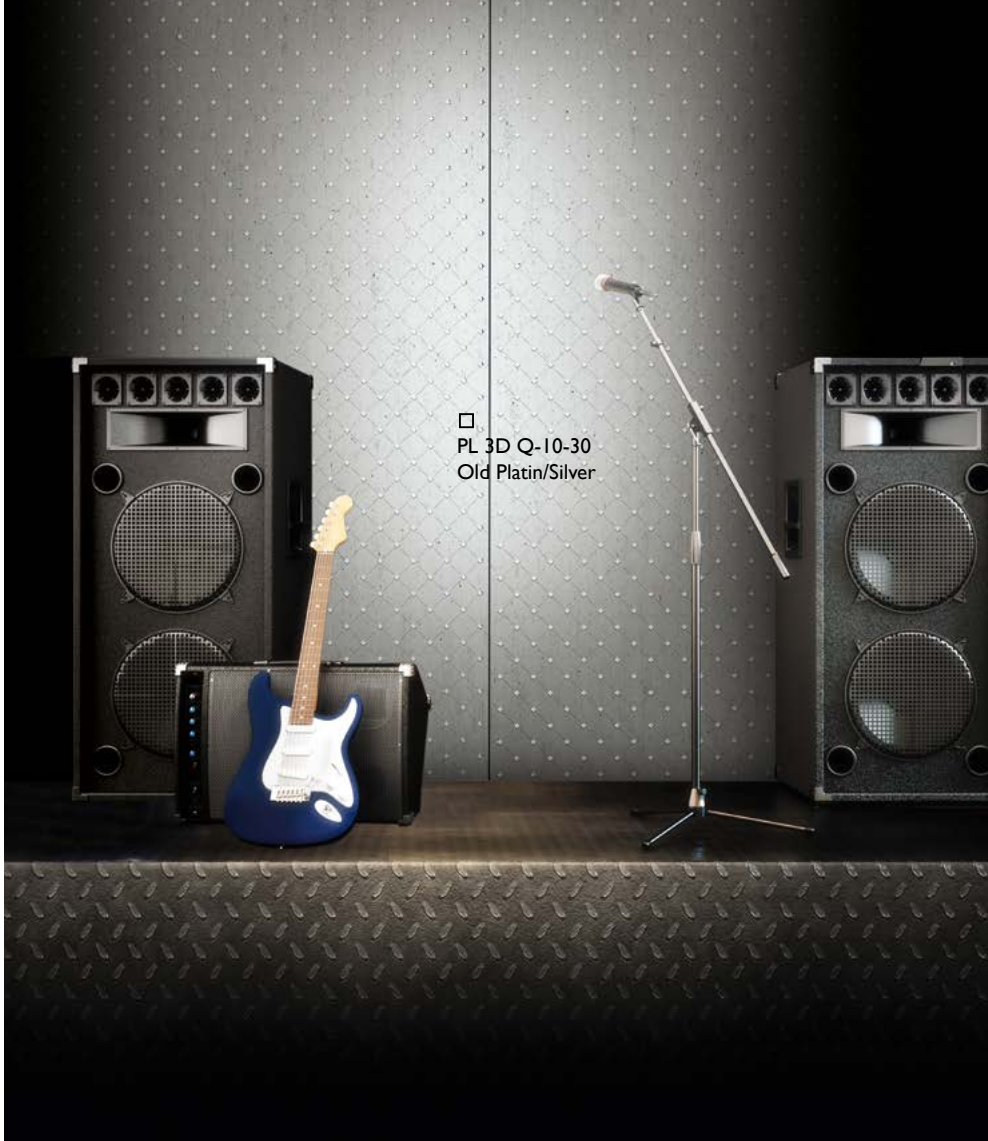


PUNCH-LINE / 3D

SIBU | DESIGN
we decorate.



PL 3D Q-10-30 Old Platin/Silver
2600 x 1000 / **NA** 17833 / **SA** 17857



□
PL 3D Q-10-30
Old Platin/Silver

2600 x 1000



PUNCH-LINE / 3D

PL 3D Q-10-30

Product characteristics

	NA	SA
Base material	APET, HIPS	
Surface material	Print	
Material thickness mm	1,3	1,43
Temperature stability	up to 50 °C	
Wet room suitability	■■■□	
Abrasion resistance	■■■■■□	
Rolled packable *	✓	✓

* Design sheets are to be rolled with the patterned side on the inside (applies for both the NA and SA versions).
We recommend that not more than 3 sheets be rolled per carton (480 x 480 mm). (Up to 40° C)

** Up to 40° C

Processing

	NA	SA
Cutting, punching	✓	✓
Drilling	✓	✓
Sawing, milling	✓	—
Laser cutting	✓	✓
Hot bending	✓	—
PVA compressible	—	—
Smallest bending radius **	300 mm	300 mm

Extra equipment

	NA	SA
Special formats	—	—
Further thicknesses	—	—
Cuttings	✓	✓
Magnetic from 3 sheets	✓	
PVA pre-treatment	—	—

Accessories

SIBUKLE	—
---------	---

Special colors

On request



□
PL 3D H-10-30
Pearl White PF/Gold



PL 3D H-10-30 Pearl White PF/Gold
2600 x 1000 / **NA** 17832 / **SA** 17856

PUNCH-LINE / 3D

PL 3D H-10-30

2600 x 1000

Product characteristics

	NA	SA
Base material	APET, HIPS	
Surface material	Print	
Material thickness mm	1,3	1,43
Temperature stability	up to 50 °C	
Wet room suitability	■■■■□	
Abrasion resistance	■■■■■■■	
Rolled packable *	✓	✓

* Design sheets are to be rolled with the patterned side on the inside (applies for both the NA and SA versions).
We recommend that not more than 3 sheets be rolled per carton (480 x 480 mm). (Up to 40° C)

** Up to 40° C

Processing

	NA	SA
Cutting, punching	✓	✓
Drilling	✓	✓
Sawing, milling	✓	—
Laser cutting	✓	✓
Hot bending	✓	—
PVA compressible	—	—
Smallest bending radius **	300 mm	300 mm

Extra equipment

	NA	SA
Special formats	—	—
Further thicknesses	—	—
Cuttings	✓	✓
Magnetic from 3 sheets	✓	
PVA pre-treatment	—	—

Accessories

SIBUKLE	—
---------	---

Special colors

On request



PL 3D ROSES Pearl White PF/Gold
2600 x 1000 / **NA** I6443 / **SA** I6444



PL 3D ROSES Silver PF met/Silver
2600 x 1000 / **NA** I3917 / **SA** I3919



PL 3D ROSES Silver PF met/Silver

Photo: Minotti

2600 x 1000



PUNCH-LINE / 3D

PL 3D ROSES

Product characteristics

	NA	SA
Base material	APET / HIPS	
Surface material	Print	
Material thickness mm	1,3	1,43
Temperature stability	up to 50 °C	
Wet room suitability	■■■□	
Abrasion resistance	■■■■■■■	
Rolled packable *	✓	✓

* Design sheets are to be rolled with the patterned side on the inside (applies for both the NA and SA versions).
We recommend that not more than 3 sheets be rolled per carton (480 x 480 mm). (Up to 40° C)

** Up to 40° C

Processing

	NA	SA
Cutting, punching	✓	✓
Drilling	✓	✓
Sawing, milling	✓	—
Laser cutting	✓	✓
Hot bending	—	—
PVA compressible	—	—
Smallest bending radius **	300 mm	300 mm

Extra equipment

	NA	SA
Special formats	—	—
Further thicknesses	—	—
Cuttings	✓	✓
Magnetic from 3 sheets	✓	
PVA pre-treatment	—	—

Accessories

SIBUKLE	—
---------	---

Special colors

On request



□
PL 3D Q 10-40-40 Silver PF met/Silver



PL 3D Q 10-40-40 Silver PF met/Silver
2600 x 1000 / **NA** 10052 / **SA** 10053



PL 3D Q 10-40-40 Smoke PF met touch I Silver matt
2600 x 1000 / **NA** 12519 / **SA** 12557

PUNCH-LINE / 3D

PL 3D Q 10-40-40

2600 x 1000

Product characteristics

	NA	SA
Base material	APET / HIPS	
Surface material	Print	
Material thickness mm	1,3	1,43
Temperature stability	up to 50 °C	
Wet room suitability	■■■■□	
Abrasion resistance	■■■■■■■	
Rolled packable *	✓	✓

* Design sheets are to be rolled with the patterned side on the inside (applies for both the NA and SA versions).
We recommend that not more than 3 sheets be rolled per carton (480 x 480 mm). (Up to 40° C)

** Up to 40° C

Processing

	NA	SA
Cutting, punching	✓	✓
Drilling	✓	✓
Sawing, milling	✓	—
Laser cutting	✓	✓
Hot bending	✓	—
PVA compressible	—	—
Smallest bending radius **	300 mm	300 mm

Extra equipment

	NA	SA
Special formats	—	—
Further thicknesses	—	—
Cuttings	✓	✓
Magnetic from 3 sheets	✓	
PVA pre-treatment	—	—

Accessories

SIBUKLE	—
---------	---

Special colors

On request

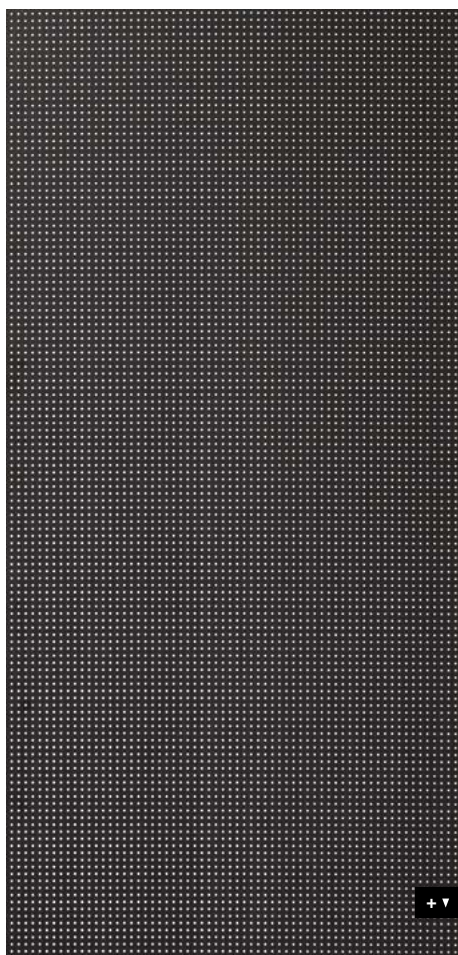


PL 3D Q 5-15-15 Black touch I/Silver
2600 x 1000 / **NA** 12384 / **SA** 12549



PL 3D Q 5-15-15
Black touch I/Silver

2600 x 1000



PUNCH-LINE / 3D

PL 3D Q 5-15-15

Product characteristics

	NA	SA
Base material	APET / HIPS	
Surface material	Print	
Material thickness mm	1,3	1,43
Temperature stability	up to 50 °C	
Wet room suitability	■■■□	
Abrasion resistance	■■■■■■■	
Rolled packable *	✓	✓

* Design sheets are to be rolled with the patterned side on the inside (applies for both the NA and SA versions).
We recommend that not more than 3 sheets be rolled per carton (480 x 480 mm). (Up to 40° C)
** Up to 40° C

Processing

	NA	SA
Cutting, punching	✓	✓
Drilling	✓	✓
Sawing, milling	✓	—
Laser cutting	✓	✓
Hot bending	✓	—
PVA compressible	—	—
Smallest bending radius **	300 mm	300 mm

Extra equipment

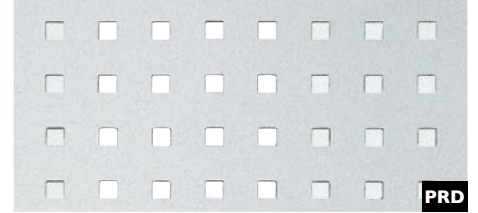
	NA	SA
Special formats	—	—
Further thicknesses	—	—
Cuttings	✓	✓
Magnetic from 3 sheets	✓	
PVA pre-treatment	—	—

Accessories

SIBUKLE	—
---------	---

Special colors

On request



PL Q 5-15-15 Silver PF met
2600 x 1000 / **NA** 10986 / **SA** 10988

PUNCH-LINE

PL Q 5-15-15

Product characteristics

	NA	SA
Base material	HIPS	
Surface material	Print	
Material thickness mm	1,0	1,13
Temperature stability	up to 60 °C	
Wet room suitability	■■■■	
Abrasion resistance	■■■■■■	
Rolled packable	✓	✓

Processing

	NA	SA
Cutting, punching	✓	✓
Drilling	✓	✓
Sawing, milling	✓	—
Laser cutting	✓	✓
Hot bending	✓	—
PVA compressible	—	—
Smallest bending radius	150 mm	150 mm

Extra equipment

	NA	SA
Special formats	On request	
Further thicknesses	up to 2 mm	
Cuttings	✓	✓
Magnetic	—	
PVA pre-treatment	—	—

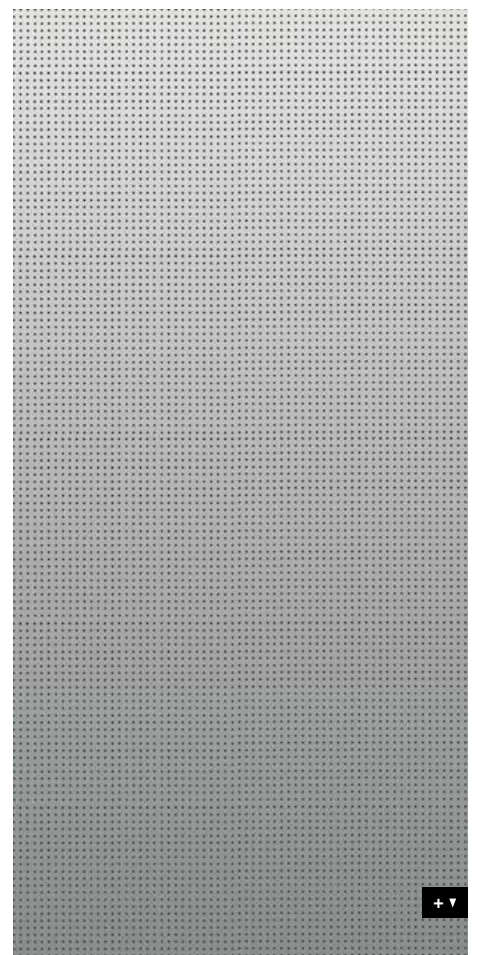
Accessories

SIBUKLE	—
---------	---

Special colors

On request

2600 x 1000





ANTIGRAV

SIBU | DESIGN
we decorate.



LL CORD Stony Ground Antigrav
2600 x 1000 / **NA** 19766



LL CORD Dove Tale Antigrav
2600 x 1000 / **NA** 19765



LL CORD Charcoal Light Antigrav
2600 x 1000 / **NA** 19764

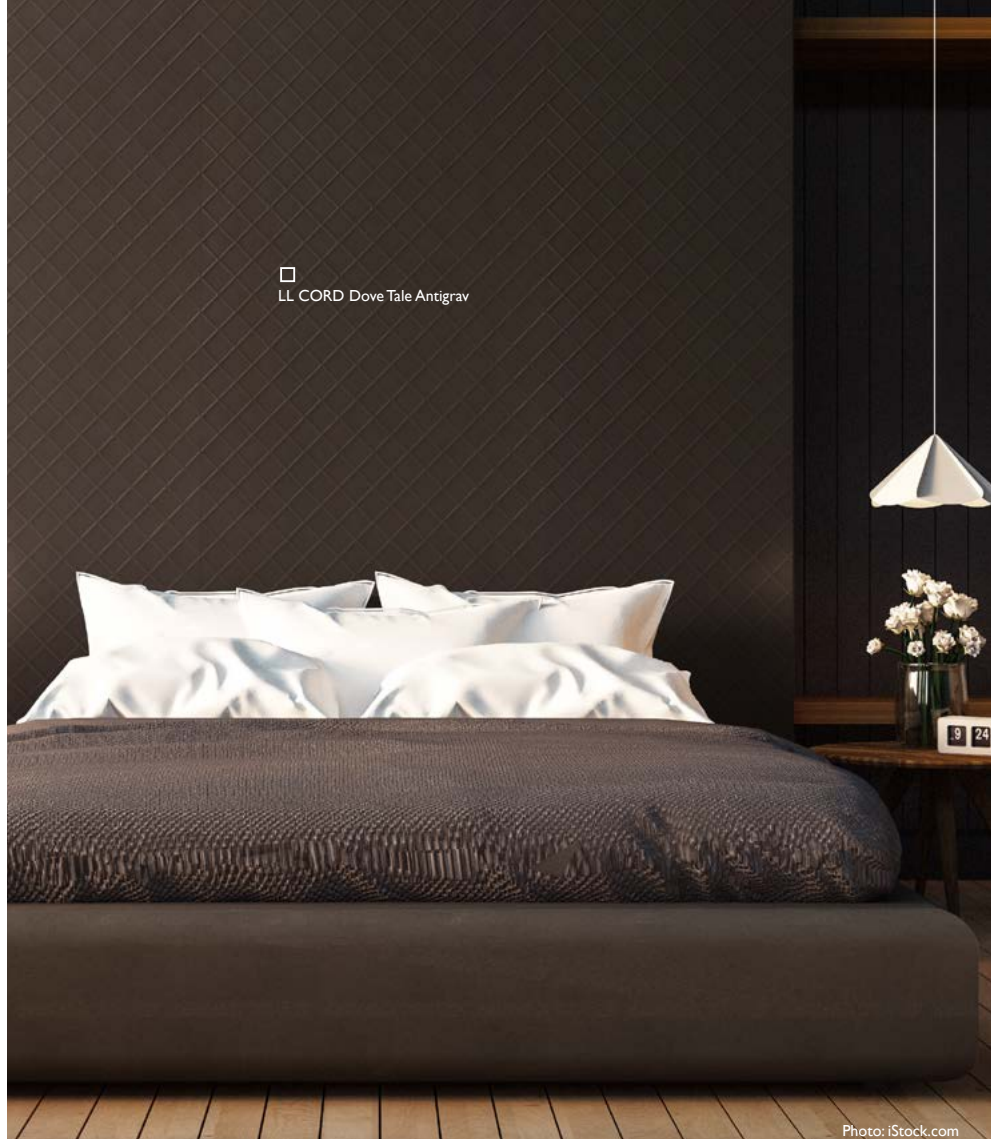


Photo: iStock.com

2600 x 1000



LEATHER-LINE

LL CORD Antigrav

Product characteristics

	NA
Base material	PP-glass fibres
Surface material	PU-leather
Material thickness mm	3,8
Max. relief height mm	6,2
Temperature stability	up to 60 °C
Wet room suitability	■■■■■
Rolled packable	—

Processing

	NA
Cutting, punching	✓
Drilling	✓
Sawing	✓
Laser cutting	✓
Hot bending	—
PVA compressible	✓
Smallest bending radius	1000 mm

Extra equipment

	NA
Special formats	—
Further thicknesses	—
Cuttings	✓
Magnetic from 3 sheets *	✓
PVA pre-treatment	—

* Ground must be a SIBU metal foil SA (ref. 17637, self adhesive).

Accessories

SIBUKLE	Spatula A2
---------	------------

Special colors

On request



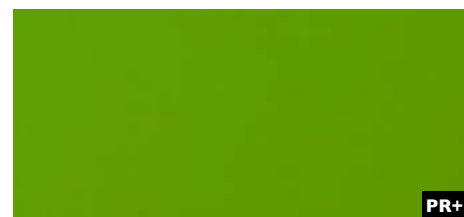
LL Lemon Yellow Antigrav
2600 x 1000 / **NA** 20425



LL Pumpkin Orange Antigrav
2600 x 1000 / **NA** 20424



LL Cobalt Blue Antigrav
2600 x 1000 / **NA** 20422



LL Apple Green Antigrav
2600 x 1000 / **NA** 20423

LEATHER-LINE

LEATHER-LINE Antigrav

Product characteristics

	NA
Base material	PP-glass fibres
Surface material	PU-leather
Material thickness mm	3,8
Temperature stability	up to 60 °C
Wet room suitability	■■■■
Rolled packable	—

Processing

	NA
Cutting, punching	✓
Drilling	✓
Sawing	✓
Laser cutting	✓
Hot bending	—
PVA compressible	✓
Smallest bending radius	1000 mm

Extra equipment

	NA
Special formats	On request
Further thicknesses	—
Cuttings	✓
Magnetic from 3 sheets *	✓
PVA pre-treatment	—

* Ground must be a SIBU metal foil SA (ref. 17637, self adhesive).

Accessories

SIBUKLE	Spatula A2
---------	------------

Special colors

On request



LL LEGUAN Silver Antigrav
2600 x 1000 / **NA** 19781



LL LEGUAN Gold Antigrav
2600 x 1000 / **NA** 19778



LL LEGUAN Copper Antigrav
2600 x 1000 / **NA** 19777



LL LEGUAN Nero Antigrav
2600 x 1000 / **NA** 19779



LL LEGUAN Silk Antigrav
2600 x 1000 / **NA** 19780



LL LEGUAN Bianco Antigrav
2600 x 1000 / **NA** 19775



Photo: Fotolia.com

LEATHER-LINE

LL LEGUAN Antigrav

Product characteristics

	NA
Base material	PP-glass fibres
Surface material	PU-leather
Material thickness mm	3,4
Temperature stability	up to 60 °C
Wet room suitability	■■■□
Rolled packable	—

Processing

	NA
Cutting, punching	✓
Drilling	✓
Sawing	✓
Laser cutting	✓
Hot bending	—
PVA compressible	✓
Smallest bending radius	1000 mm

Extra equipment

	NA
Special formats	On request
Further thicknesses	—
Cuttings	✓
Magnetic from 3 sheets *	✓
PVA pre-treatment	—

* Ground must be a SIBU metal foil SA (ref. 17637, self adhesive).

Accessories

SIBUKLE	Spatula A2
---------	------------

Special colors

—



□ LL Charcoal Dark Antigrav



LL Charcoal Dark Antigrav
2600 x 1000 / **NA** 19762



LL Charcoal Light Antigrav
2600 x 1000 / **NA** 19763



LL Dove Tale Antigrav
2600 x 1000 / **NA** 19769



LL London Clay Antigrav
2600 x 1000 / **NA** 19782



LL Stony Ground Antigrav
2600 x 1000 / **NA** 19794

LEATHER-LINE

LEATHER-LINE Antigrav

Product characteristics

	NA
Base material	PP-glass fibres
Surface material	PU-leather
Material thickness mm	3,8
Temperature stability	up to 60 °C
Wet room suitability	■■■■■
Rolled packable	—

Processing

	NA
Cutting, punching	✓
Drilling	✓
Sawing	✓
Laser cutting	✓
Hot bending	—
PVA compressible	✓
Smallest bending radius	1000 mm

Extra equipment

	NA
Special formats	On request
Further thicknesses	—
Cuttings	✓
Magnetic from 3 sheets *	✓
PVA pre-treatment	—

* Ground must be a SIBU metal foil SA (ref. 17637, self adhesive).

Accessories

SIBUKLE	Spatula A2
---------	------------

Special colors

On request



FR

LL IMPERIAL White Antigrav
2600 x 1000 / **NA** 19771



LL IMPERIAL White Antigrav

2600 x 1000



LEATHER-LINE

LL IMPERIAL Antigrav

Product characteristics

	NA
Base material	PP-glass fibres
Surface material	PU-leather
Material thickness mm	4,1
Max. relief height mm	5,7
Temperature stability	up to 60 °C
Wet room suitability	■■■■■
Rolled packable	—

Processing

	NA
Cutting, punching	✓
Drilling	✓
Sawing	✓
Laser cutting	✓
Hot bending	—
PVA compressible	✓
Smallest bending radius	1000 mm

Extra equipment

	NA
Special formats	—
Further thicknesses	—
Cuttings	✓
Magnetic from 3 sheets *	✓
PVA pre-treatment	—

Accessories

SIBUKLE	Spatula A2
---------	------------

Special colors

On request

* Ground must be a SIBU metal foil SA (ref. 17637, self adhesive).

+ ▼



DM CEMENT Light Antigra
2600 x 1000 / **NA** 19563

DECO-LINE

DM CEMENT Light Antigra

Product characteristics

	NA
Base material	PP-glass fibres
Surface material	impregnated paper
Material thickness mm	3,1
Temperature stability	up to 60 °C
Wet room suitability	■■■■□
Abrasion resistance	■■■■■■□
Rolled packable	—

Processing

	NA
Cutting, punching	✓
Drilling	✓
Sawing, milling	✓
Laser cutting	✓
Hot bending	—
PVA compressible	✓
Smallest bending radius	1000 mm

Extra equipment

	NA
Special formats	On request
Further thicknesses	—
Cuttings	✓
Magnetic from 3 sheets **	✓
PVA pre-treatment	—

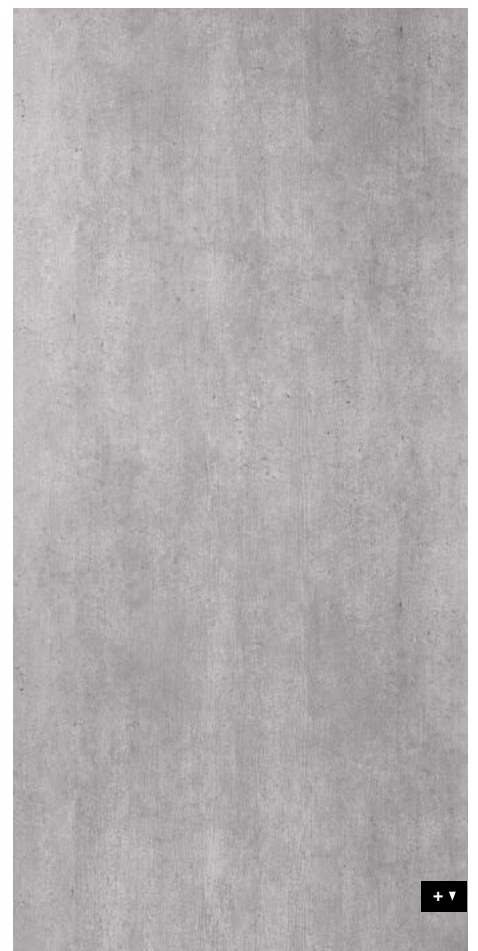
Accessories

SIBUKLE	Spatula A2
---------	------------

Special colors

—

2600 x 1000



* Prior to printing a corona or plasma treatment has to be carried out.
Upon request available in pre-treated version.

** Ground must be a SIBU metal foil SA (ref. 17637, self adhesive).



DM CEMENT Dark Antigrav
2600 x 1000 / **NA** 19798



Photo: © shutterstock.com

2600 x 1000



DECO-LINE

DM CEMENT Dark Antigrav

Product characteristics

	NA
Base material	PP-glass fibres
Surface material	impregnated paper
Material thickness mm	3,3
Temperature stability	up to 60 °C
Wet room suitability	■■■□
Abrasion resistance	■■■■□□
Rolled packable	—

Processing

	NA
Cutting, punching	✓
Drilling	✓
Sawing, milling	✓
Laser cutting	✓
Hot bending	—
PVA compressible	✓
Smallest bending radius	1000 mm

Extra equipment

	NA
Special formats	On request
Further thicknesses	—
Cuttings	✓
Magnetic from 3 sheets **	✓
PVA pre-treatment	—

Accessories

SIBUKLE	Spatula A2
---------	------------

Special colors

—



DM MARBLE White Antigrav
2600 x 1000 / NA 19566

DECO-LINE

DM MARBLE White Antigrav

Product characteristics

	NA
Base material	PP-glass fibres
Surface material	impregnated paper
Material thickness mm	3,1
Temperature stability	up to 60 °C
Wet room suitability	■■■■□
Abrasion resistance	■■■■■□
Rolled packable	—

Processing

	NA
Cutting, punching	✓
Drilling	✓
Sawing, milling	✓
Laser cutting	✓
Hot bending	—
PVA compressible	✓
Smallest bending radius	1000 mm

Extra equipment

	NA
Special formats	On request
Further thicknesses	—
Cuttings	✓
Magnetic from 3 sheets **	✓
PVA pre-treatment	—

Accessories

SIBUKLE	Spatula A2
---------	------------

Special colors

—

* Prior to printing a corona or plasma treatment has to be carried out.
Upon request available in pre-treated version.

** Ground must be a SIBU metal foil SA (ref. 17637, self adhesive).

2600 x 1000





PRS*

DM Travertin Antigrav
2600 x 1000 / **NA** 19567



□
DM Travertin Antigrav

2600 x 1000



DECO-LINE

DM Travertin Antigrav

Product characteristics

	NA
Base material	PP-glass fibres
Surface material	impregnated paper
Material thickness mm	3,3
Temperature stability	up to 60 °C
Wet room suitability	■■■□
Abrasion resistance	■■■■□□
Rolled packable	—

Processing

	NA
Cutting, punching	✓
Drilling	✓
Sawing, milling	✓
Laser cutting	✓
Hot bending	—
PVA compressible	✓
Smallest bending radius	1000 mm

Extra equipment

	NA
Special formats	On request
Further thicknesses	—
Cuttings	✓
Magnetic from 3 sheets**	✓
PVA pre-treatment	—

Accessories

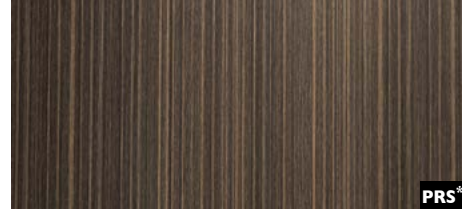
SIBUKLE	Spatula A2
---------	------------

Special colors

—



WL Wenge Wood AntigraV



PRS*

WL Wenge Wood AntigraV
2600 x 1000 / **NA** 19571

Photo: © fotolia.com

WOOD-LINE

WL Wenge Wood AntigraV

2600 x 1000



Product characteristics

	NA
Base material	PP-glass fibres
Surface material	impregnated paper
Material thickness mm OAK TREE	3,1
Material thickness mm Wenge Wood	3,3
Temperature stability	up to 60 °C
Wet room suitability	■■■□
Abrasion resistance	■■■□□□
Rolled packable	—

Processing

	NA
Cutting, punching	✓
Drilling	✓
Sawing, milling	✓
Laser cutting	✓
Hot bending	—
PVA compressible	✓
Smallest bending radius	1000 mm

Extra equipment

	NA
Special formats	On request
Further thicknesses	—
Cuttings	✓
Magnetic from 3 sheets**	✓
PVA pre-treatment	—

Accessories

SIBUKLE	Spatula A2
---------	------------

Special colors

—

* Prior to printing a corona or plasma treatment has to be carried out.
Upon request available in pre-treated version.

** Ground must be a SIBU metal foil SA (ref. 17637, self adhesive).



WL Nutwood Antigrav
2600 x 1000 / **NA** 19568



WL Nutwood Country Antigrav
2600 x 1000 / **NA** 19569



WL Maple Alpine Antigrav
2600 x 1000 / **NA** 19570



WOOD-LINE

WL Nutwood Antigrav

Product characteristics

	NA
Base material	PP-glass fibres
Surface material	impregnated paper
Material thickness mm	3,3
Temperature stability	up to 60 °C
Wet room suitability	■■■□
Abrasion resistance	■■■■□□
Rolled packable	—

Processing

	NA
Cutting, punching	✓
Drilling	✓
Sawing, milling	✓
Laser cutting	✓
Hot bending	—
PVA compressible	✓
Smallest bending radius	1000 mm

Extra equipment

	NA
Special formats	On request
Further thicknesses	—
Cuttings	✓
Magnetic from 3 sheets**	✓
PVA pre-treatment	—

Accessories

SIBUKLE	Spatula A2
---------	------------

Special colors

—



WL Carbonized Wood Antigra



WL Carbonized Wood Antigra
2600 x 1000 / **NA** 20158

WOOD-LINE

WL Carbonized Wood Antigra

Product characteristics

	NA
Base material	PP-glass fibres
Surface material	impregnated paper
Material thickness mm	3,3
Temperature stability	up to 60 °C
Wet room suitability	■■■■□
Abrasion resistance	■■■■□□
Rolled packable	—

Processing

	NA
Cutting, punching	✓
Drilling	✓
Sawing, milling	✓
Laser cutting	✓
Hot bending	—
PVA compressible	✓
Smallest bending radius	1000 mm

Extra equipment

	NA
Special formats	On request
Further thicknesses	—
Cuttings	✓
Magnetic from 3 sheets**	✓
PVA pre-treatment	—

Accessories

SIBUKLE	Spatula A2
---------	------------

Special colors

—

* Prior to printing a corona or plasma treatment has to be carried out.
Upon request available in pre-treated version.

** Ground must be a SIBU metal foil SA (ref. 17637, self adhesive).

2600 x 1000





PROCESSING INSTRUCTIONS GENERAL
PROCESSING INSTRUCTIONS **SIBUGLAS**
PROCESSING INSTRUCTIONS **ANTIGRAV**

SIBU | DESIGN
we decorate.

Product characteristics

To answer your questions as quickly as possible, our team has worked out a technical table with product characteristics, extra equipment and much more for each of our products:

BASE MATERIAL

As a base material we use a specially developed, highly impact resistant polystyrene type (HIPS). HIPS distinguish particularly by robustness, high impact and a very low weight. For our ACRYLIC-LINE we use as a base material ABS with acrylic surface. With PUNCH-LINE 3D products we use HIPS with background foil from A-PET.

Scratch-resistant PMMA is employed for the SIBUGLAS product group and PP glass fibre material is used for the Antigrav range.

MATERIAL THICKNESS

The given material thicknesses refer to the stock program in non adhesive (NA) and self adhesive (SA) version.

SA SELF-ADHESIVE

SA means that the design sheet is equipped with adhesive at the back. For this we use high-quality acrylic adhesive substance or synthesis rubber (PUNCH-LINE 3D, MultiStyle).

In order to achieve maximum adhesion, always clean non-absorbent surfaces with alcohol (ethanol, isopropyl alcohol).

Self-adhesive (SA) sheets are ideally suited to non-absorbent surfaces such as coated MDF/chipboard, glass, metal, plastic, etc. However, they are unsuitable for use on ceilings. Alternative processing options are available on request.

TOLERANCES

Machine-related dimensional and angle tolerances:

+/- 1.0 mm in relation to 1,000 mm

Temperature-related dimensional deviations:

+/- 0.7 mm in relation to 1,000 mm at a temperature change of 10 °C (except Antigrav)

ROLLED PACKABLE

Basically our design sheets are packed flat on pallets. However, in order to dispatch small consignments as favourably as possible, we have developed a packaging carton in which many of our design sheets can be packed rolled as well.

Basically, the following applies:

Design sheets in non-adhesive (NA) version are rolled with the decor side outwardly and design sheets in self-adhesive version (SA) are rolled with the glue side outwardly.

Exceptions:

LEATHER-LINE products and sheets with a magnetic film: always roll with the patterning on the outside.

PL 3D, WOOD-LINE and DECO-LINE products with impregnated papers: always roll with the patterning on the inside.

Packed in boxes (480x480 mm):

DECO-LINE products with strips and sheets with a magnetic film: we recommend a maximum of 2 pieces per box.

DECO-LINE products with impregnated papers, LEATHER-LINE, PUNCH-LINE 3D and WOOD-LINE: we recommend a maximum of 3 pieces per box.

DECO-LINE (excluding products with impregnated papers), PUNCH-LINE, ACRYLIC-LINE, MSC and STRUCTURE-LINE products: we recommend a maximum of 6 pieces per box.

After receipt, rolled goods should be laid out flat for around 24 hours at room temperature and if necessary, subjected to additional weight.

SURFACE MATERIAL

In a changeable world we focus on lastingness and high standards by using 100% PVC-free surfaces. We make a distinction between:

- Polyurethane synthetic leather surfaces (PU)
- Polyester imitation fur surfaces (PET)
- Metallized surfaces (PET)
- Printed surfaces (Print)
- Acrylic surfaces (PMMA)
- Impregnated papers

All variations are optically outstanding and also fascinate by their unique haptics. They correspond to the highest demands and they are suited especially for the interior area.

MAXIMUM RELIEF HEIGHT

With the given data we define the highest position of the respective design in non-adhesive (NA) and adhesive (SA) version.

PRINTING

Owing to the many differing printing and colour systems, customers must carry out a printing test. The result will depend on the respective motif. We will be pleased to provide original samples for testing.

SIBU guideline values:

PRD digital printing possible

PRS screen printing possible

PR+ digital/screen printing possible

PR+* digital/screen printing possible, prior to printing a corona or plasma, treatment has to be carried out. By request available in pre-treated version.

PRS* screen printing possible, prior to printing a corona or plasma, treatment has to be carried out. By request available in pre-treated version.

SCREEN PRINTING:

The final adhesion performance will set in very slowly and can take up to one week on air-drying (20 °C.).

TEMPERATURE STABILITY

We supply to more than 70 countries in the world and have nearly everywhere special climate situation. Therefore we test our material under the hardest conditions. Already during development stage our SIBU design sheets are tested in special thermo-containers stuck on ground as well as unstuck with high temperatures and high air humidity.

Only the very best qualities correspond to our strict directives. The given data of the temperature stability refer to the lasting application of the product stuck on different grounds and to the long-term using temperature also without adhesion.

WET ROOM SUITABILITY

An exposure of SIBU design sheets to humid areas is given when a design sheet is subjected to short term humidity condition. This humidity condition can occur by reason of high air humidity or by direct sprinkling water. SIBU design sheets are not suited for the direct wet space area as well as for long-term wet influence (except SIBUGLAS).

■■■■ Wet room suitability

■■■□ Wet room suitability, but material reacts more sensitively to sprinkling water. Removing of moisture is recommended.

ABRASION RESISTANCE

Products with marked abrasion resistance **AR** show an extremely abrasion resistant surface. Our technology team already tests the products during development process to be able to offer the matching product for each of your demands.

■■■■■■■■ Scratch resistant (SIBUGLAS AR+)

■■■■■■ Excellent abrasion resistance

■■■■■■□ Very good abrasion resistance

■■■■□□ Good abrasion resistance

■■■□□ Normal abrasion resistance

■■□□□ Low abrasion resistance

■□□□□ Use only in the decoration area

Extra equipment

We are aware of the fact that not always you can use our standard stock articles for your intended application and offer for you special extra equipment.

FIRE CLASSIFICATION

The products from the stock program correspond to the fire safety regulations according to DIN 4102 B2, excluded products ACRYLIC-LINE (test standard: UL Standard 94, measured value: 94 HB). Marked products **FR** are available in flame retardant version on request, on a different carrier material. Certificates of the following standards are available: EN 13501-1 and ASTM E 84. Info sheets on demand!

CUTTINGS

You want to get customized sheets or cuttings? Please contact us that we can offer the best possible solution to you. With a cutting length up to 3.2 meter and a punching and sawing length up to 3 meter we are able to meet your requirements and needs promptly.

PVA PRE-TREATMENT

In order to be suitable for PVA bonding, depending upon the material thickness on the reverse side, SIBU design sheets either have to be pre-treated by means of an additional production process, or roughened by using a vibration sander (80-grain sandpaper).

Being able to carry out this pre-treatment for you in our factory, we absolutely need this information together with your order.

SPECIAL FORMATS

In addition to the standard sizes given in the OVERVIEW we offer with pleasure individually adapted product dimensions.

FURTHER THICKNESSES

Responding to your request we produce our DECO-LINE and PUNCH-LINE in thicknesses between 0.8 and 4.0 mm.

MAGNETIC

All SIBU design sheets are available with a magnetic back from 3 pieces onwards. Exception - all LL ROMBO, LL QUADRO, CR CRISTAL ROMBO and PUNCH-LINE.

SIBU magnetic foils are suitable on different metallic grounds and on magnetic colours. The exchange of design sheets thereby becomes a child's play! The application fields for the new SIBU DESIGN magnetic program are nearly unlimited – for shop-window decoration, shop fitting and fair design or in the furniture area, decoration field and for all kinds of displays.

Self-adhesive SIBU metal film is employed when a suitable metallic ground is lacking. The metal film can be ordered as a sheet (2,600x1,000 mm) or roll (14 or 29 m)

Processing (except SIBUGLAS and ANTIGRAV)

Please note that SIBU design sheets always have to be processed from the decor side.

SURFACE PROTECTION

A protective film protects our surfaces against damages. This protective film should be removed only after the application of our design sheets.

PUNCHING

Band steel cutting is recommended for design sheets in thickness from 1 up to 1.5 mm.

Please study the technical table in the overview in order to see if this processing step is permissible for your product.

DRILLING

All SIBU design sheets can be drilled from the decor side.

MILLING

For material up to 2 mm thickness:

Cutter with 3 mm diameter, rotation speed from 12000 up to 24000 rpm, progressive feed up to 12 m/min.

Decor side on top:

milling cutter with a left-hand twist, cutting right.

Decor side below:

milling cutter with a right-hand twist, cutting right.

For material with a thickness of more than 2 mm, reduce the progressive feed and use a milling cutter with a larger diameter (6 mm).

SMALLEST BENDING RADIUS

The given data refer to the smallest bending radius for concave or convex fixing. For all design sheets – with the exception of MultiStyle – all sheet edges must be fixed mechanically in any case! For MultiStyle there is no need for mechanical fixing!

HOT BENDING

Heat up the SIBU design sheets from the backside – for both, internal and exterior angles.

Approximate parameters for material in 1mm thickness: wire temperature: approx. 200°C, heating time: approx. 6 seconds

For ACRYLIC-LINE, PUNCH-LINE, DECO-LINE and STRUCTURE-LINE design sheets hot bending is outwardly (decor outside) possible – hot bending inwards (decor inside) is possible only with plain designs or with fine structures. For deeper structures - no exact internal angle.

Hot bending with LEATHER-LINE design sheets is possible outwardly (decor outside), inwards (decor side inside) only with plain LEATHER-LINE. Using structured leather designs it can happen that wrinkles may appear along the internal angles.

CUTTING

SIBU DECO-LINE sheets with less than 2 mm thickness can be easily cut with a wallpaper knife. Simply notch the surface and break along the edge. For all other product lines and for DECO-LINE sheets up to 3 mm thickness the cutting pressure has to be increased. After cutting and breaking our self-adhesive (SA) design sheets as well as 3D PUNCH-LINE designs (NA + SA) the foil on the back side has to be cut separately. Always use well sharp knives.

SAWING

SIBU guideline values:

Material thicknesses of up to 1 mm:

HW 280x3.2 / 2.2x30 Z60 / 12.46-18.08 WZ

Thicker than 1 mm:

HW 250x3.2 / 2.2x30 Z40 / 19.63 WZ/FA

HW 250x3.2 / 2.2x30 Z40 / 19.63 FZ/TR

(speed 6000 rpm, progressive feed of up to 25 m/min).

For LEATHER-LINE:

HW 255x2.8 / 2.0x30 Z80 / 10.01 FZ WZ

(speed 6000 rpm, progressive feed of up to 10 m/min).

The best result with LEATHER-LINE is achieved with MDF underlay (4 mm) above and below, slow progressive feed and high speed.

*HW (hard metal material), WZ/FA (alternating teeth/bevelled edge), FZ (flat teeth), TR (trapezoidal teeth)

LASER CUTTING

All SIBU design sheets can be processed with standard lasers. The cutting speed conforms to the watt power of the laser.

Please refer to the technical data in our Overview brochure, if that processing step is permitted for that product.

THERMOFORMING

With a variety of Deco-Line products light forming, by using flat and not sharp-edged tools, is possible (avoid sharp contours and use larger radii). With every new moulding test are to be made, in order to obtain ideal results. The tool must be adapted to the material.

Refer to the technical table in the Overview catalogue whether this processing step is suitable for your product or not.

PVA-PRESSING

Non-adhesive design sheets from our DECO-LINE, LEATHER-LINE, STRUCTURE-LINE, ACRYLIC-LINE and ANTIGRAV series (with a few exceptions) are compressible with commercial PVA adhesives. The ground must be absorbent (MDF, chipboard, etc.)

In order to be suitable for PVA bonding, depending upon the material thickness on the reverse side, SIBU design sheets either have to be pre-treated by means of an additional production process, or roughened by using a vibration sander (80-grain sandpaper).

Should by reason of transport or stock conditions the design sheet not have a crease-free protective film, the film should be removed prior to pressing process. The pressure applied should amount to 2 kg/cm² (0.2 N/mm²), the temperature to approx. 45°C and the pressing time to around 10 minutes. The bonding of the balancing material and the design sheet should be done in a single working process.

During pressing onto an untreated particle board in 16 mm thickness, best results were achieved with a 1 mm polystyrene balancing sheet.

When pressing structured design sheets (STRUCTURE-LINE, ACRYLIC-LINE and LEATHER-LINE), a medium-hard sponge rubber mat with a thickness of approx. 5 mm should be used between the pressing sheet and the patterned side of the design sheet. This provides uniform pressure distribution and prevents undesirable crushing spots.

When using DECO-LINE sheets it is better to press without the sponge rubber mat. The mat could cause irregular optics in the mirror surface. If you want to have a perfect mirror result, ask us for design sheets in 2 mm thickness.

Following pressing allow the sheets to cool in a stack over night (about 16 hours). Cover the stack with a 19 mm plate so that the uppermost sheet also remains flat.

As a result of this type of processing, standard edges of plastic, aluminium or wood can be used! The PVA adhesive prevents the usual expansion of our design sheets due to the effect of increased temperature!

Accessories

SIBUKLE D22HV

Solvent-free dispersion adhesive

The best suitable spatula size A1 or A2 is given for each product.

Applications: SIBUKLE D 22 HV is highly suitable for the bonding of SIBU products onto absorbent, flat surfaces such as wood, plywood, particleboard, gypsum plasterboard, concrete or smooth brickwork.

WARNING: SIBUKLE D 22 HV is entirely unsuitable for non-absorbent surfaces such as tiles, plastics, metals, glass, etc.

Please follow the processing guidelines on the adhesive label.

Storage / Transport

STORAGE INSTRUCTIONS

SIBU design sheets must always be kept in indoor stock, no storage outside! Following instructions are to be considered:

- Design sheets to be stored flat, rolled packed design sheets should be unpacked and laid out flat and - if necessary - subjected to additional weight to improve flatness (Use carton underlay and weigh down the entire sheet in order to prevent damage.)
- Store the uppermost plate in the pile with decor side down.
- Protect SIBU products from UV rays.
- Do not expose SIBU products to moisture or humidity.
- Protect material from dirt, dust and mechanical damages.
- A permanent storage of more than 3 months at a temperature less than 0 °C or more than +30 °C may impact the quality of our design sheets and should be avoided.

TRANSPORT INSTRUCTIONS

In general, for the transport of SIBU products pay attention to protect them from dirt, UV radiation, moisture and mechanical damages.

- Use stable, flat pallets with carton bedding, the pallet should be longer than the design sheets.
- Place the uppermost design sheet on the pallet with the decor side face down. This uppermost design sheet should be protected in addition by a carton and a board (e.g., chipboard, HDF...).
- The design sheets should be protected from shifting.
- The edges and sides must be also protected (edge protection, PE foil ...)
- Avoid temperatures below – 35 °C or more than + 50 °C.
- Structured sheets to be transported on pallets with the patterns running in same direction.
- SIBU products must be acclimatized prior to processing; ideal processing temperature is approx. + 10 °C to + 30 °C.
- Before any processing of the design sheets read the attached processing instructions which you can also find on the SIBU website!
- SIBUKLE D 22 HV should not be long-time stored below + 5 °C and must be protected from frost during transportation.
- Rolled packable: please see page 138

Cleaning / Disposal

CLEANING

DECO-LINE, STRUCTURE-LINE, ACRYLIC-LINE, PUNCH-LINE, PUNCH-LINE 3D: in case of light dirt by means of soft cleaning cloth (it should be free of dust and free of dirt). In case of heavy dirt by means of standard plastic or window cleaner (spray cleaners not onto the material surface, but sparingly onto the cleaning cloth).

Do not use abrasive cleaners, solvent cleaners or pure alcohol!

LEATHER-LINE: Clean leather surfaces by means of standard liquid soap and then remove the soap with a humid cloth.

Imitation fur surfaces: In case of light dirt clean LL Marabu with a vacuum cleaner; in case of heavy dirt clean with a humid cloth.

DISPOSAL

The keeping of healthy environment has high priority for us! We check all raw materials used for their environmental compatibility. Because not everyone has its own plastic disposal container, we pay special attention in development of new products to use only high-quality materials: materials, which may be disposed safely with the domestic waste. On demand we are pleased to provide LGA certificates for all SIBU design sheets.

Processing information general

(except SIBUGLAS und ANTIGRAV)

GROUND PREPARATION FOR GLUING

The ground must be dry and smooth, and free from loose material, dust, dirt, grease, wax and silicone. SIBU patterned sheets should never be mounted onto an uneven surface, as this results in a loss of visual quality.

In the case of convex and concave surfaces, the sheet edges must be fixed mechanically (except for MultiStyle).

Non-absorbent surfaces

In order to achieve maximum adhesion, always clean non-absorbent surfaces with alcohol (ethanol, isopropyl alcohol).

Self-adhesive (SA) sheets are ideally suited to non-absorbent surfaces such as coated MDF/chipboard, glass, metal, plastic, etc. However, they are unsuitable for use on ceilings. Alternative processing options are available on request.

Absorbent surfaces

A solvent-free adhesive, which is suitable for both the underlying surface and the polystyrene material (base material), must be employed on absorbent grounds, e.g. uncoated chipboard, MDF, plasterboard, or smoothed brickwork. Sibu recommendation: SIBUKLE.

BONDING

Patterned sheets delivered in rolled form must be kept flat for a minimum of 24 hours. Weighing down improves evenness.

Ideal processing temperatures range from + 10°C up to + 30°C. The design sheets should be acclimatised, i.e. be brought to room temperature prior to processing (avoidance of condensation on the gluing surface and a reduction in sheet expansion due to reduced temperature differences).

A temperature increase of 10°C will cause our products to expand by approx. 0.7 mm over a length of 1 meter. As a rule, expansion gap of approx. 2 – 3 mm should be kept at each sheet edge!

In case of high surroundings temperature or major temperature-fluctuations the expansion gap should be increased or the sheet format should be chosen smaller. Avoid blistering (air inclusions); use a medium-hard hand rubber roller with a width of approx. 170 mm.

Remove the backing cover step-by-step from self-adhesive design sheet (SA), do not touch gluing surface and press the sheet onto the ground as firmly as possible. The final adhesion power will be reached at room temperature after 24 hours.

PROCESSING SIBUKLE

Application: SIBUKLE D 22 HV is ideally suited to the bonding of SIBU products onto absorbent, even surfaces such as wood, MDF, plywood, chipboard, plasterboard, or smooth brickwork. The underlying surface must be absorbent (MDF, chipboard, etc.).

WARNING! SIBUKLE D 22 HV is not unsuitable for non-absorbent grounds such as tiles, plastics, metals and glass, etc.

As a rule, an approx. 2 to 3 mm expansion joint is to be left along the sheet edges!

Processing: Apply only to the cleaned surface, which has been prepared for bonding, using a fine spatula (the spatula toothing for every product is provided in the OVERVIEW catalogue). With an ambient temperature of between 20 °C and 35 °C, the adhesive should then be left to air for 20 to 40 minutes. No drying time is required for PNL products, which are to be bonded in a wet adhesive bed. Fix mechanically if necessary, until the adhesive has hardened.

The higher the ambient temperature, the shorter is the airing time.

Finger test: following application with the spatula, the optimal airing time is reached as soon as the adhesive no longer sticks to the fingers!

Avoid the formation of bubbles (air inclusions) and use a medium-hard, rubber roller with a width of approx. 170 mm.

If other solvent-free dispersion adhesives are employed, the respective processing instructions are to be followed.

Storage: In the original airtight containers the adhesive can be stored up to 12 months from delivery date. Store always above freezing point. Protect from frost, otherwise the glue cannot be used anymore!

GROUND – BONDING – EXPANSION GAPS

The ground must be dry and smooth, and free from loose material, dust, dirt, grease, wax and silicone. SIBU patterned sheets should never be mounted onto an uneven surface, as this results in a loss of visual quality.

In the case of convex and concave surfaces, the sheet edges must be fixed mechanically.

Non-absorbent surfaces:

In order to achieve maximum adhesion, always clean non-absorbent surfaces with alcohol (ethanol, isopropyl alcohol).

Self-adhesive (SA) sheets are ideally suited to non-absorbent surfaces such as coated MDF/chipboard, glass, metal, plastic, etc. However, they are unsuitable for use on ceilings. Alternative processing options are available on request.

Absorbent surfaces:

A solvent-free adhesive, which is suitable for both the underlying surface and the polystyrene material, must be employed on absorbent grounds, e.g. uncoated chipboard, MDF, plasterboard, or smoothed brickwork. Sibu recommendation: SIBUKLE D22 HV.

Ideal processing temperatures range from + 10 °C to + 30 °C. The design sheets must be acclimatised, i.e. be brought to room temperature prior to processing (avoidance of condensation on the gluing surface and a reduction in sheet expansion due to reduced temperature differences).

A temperature increase of 10 °C will cause our products to expand by approx. 0.7 mm over a length of 1 m.

As a rule, an approx. 2-3 mm expansion joint is to be left along the sheet edges!

In the case of high ambient temperatures, or major temperature fluctuations, the expansion gap should be increased, or a smaller sheet format selected.

Remove the paper backing from the reverse side of self-adhesive patterned sheets (SA) step-by-step. Do not touch the adhesive surface and press the sheet onto the ground as firmly as possible. Avoid the formation of bubbles (air inclusions) and use a medium-hard, rubber roller with a width of approx. 170 mm.

Full adhesion will be reached at room temperature after 24 hours.

Whenever possible, SIBU DESIGN products should be processed within 12 months (except for PVA pre-treated products, please see the PVA news update at www.sibu.at).

They are not recommended for use near open fires or sources of intense heat.

BONDING USING SIBUKLE D 22 HV

SIBUKLE D 22 HV is suitable for the bonding of SIBUGLAS products on absorbent, level surfaces such as wood, plywood, chip- and plasterboard, concrete or smoothed masonry. PLEASE NOTE: SIBUKLE D 22 HV is totally unsuitable for non-absorbent surfaces such as tiles, plastic coverings, metal, glass, etc.

Processing: once the ground surface for laying has been prepared and cleaned, fully cover it alone with adhesive using a spatula with A2 teeth and then press down. It is essential that SIBUGLAS products be bonded in a bed of wet adhesive. When required fix mechanically until the adhesive has hardened. Please follow the processing guidelines on the adhesive label.

BONDING & POINTING WITH SIBU SILICON

(Acetic acid free, textured natural stone silicone)

Bead bonding:

Place strips of mirrored adhesive tape vertically on the reverse side of the sheet at a distance of 10 mm from its edges or the profile flanges, thus leaving gaps all round.

It is recommended that the protective strip on the mirrored tape be removed prior to the further processing phases.

Apply vertical beads of adhesive to the reverse side of the sheet at intervals of approx. 60 mm. Depending on the underlying surface, the beads should have a height of at least 4 mm.

Bring the sheet into position without any drying time and then press it down onto the prepared surface by means of vertical strokes with a soft wallpaper roller.

Once the adhesive has hardened, the joints and gaps must be sealed carefully with silicone.

Immediately remove the protective film from the sheet and any possible adhesive residues.

PVA BONDING

(please see page Seite 150)

MAGNETIC

With SIBUGLAS MAGNETIC professional decoration changes become child's play. Deliveries can be made for orders of three sheets and upwards. Any surfaces suitable for magnets can be used as a ground and should these be unavailable, SIBU METALFOIL provides the solution.

SURFACE PROTECTION

All the top surfaces are safeguarded against damage by a protective film, which should first be removed following processing.

GOLDEN RULES

As a rule, complete processing on the patterned side (for this reason jig- and hand-held circular saw working must take place on the reverse side).

It is imperative that sheet flapping be avoided totally during all working phases.

Always lay the sheets out flat and if necessary pin them down.

Always use high-speed, sharp cutting tools and rapid feeding!

The generation of heat should be constantly avoided, as this can result in material tension.

MECHANICAL PROCESSING OF THE PATTERNED SHEETS PRIOR TO ADESIVE APPLICATION

Sawing

SIBUGLAS sheets can be cut with jig, hand-held circular, panel and circular table saws. During cutting on the reverse side, the underlay should also be sawn through. Then deburr all cut edges.

- **Cutting to length using a hand-held or plunge cut circular saw**

Cut from the reverse side and use a stable underlay.

Recommended saw blade: 160x2.2 hard metal blade with 48 alternating teeth.

- **Cutting to length using a jigsaw**

Set the pendulum action to zero, or at a maximum to I and then saw from the reverse side.

The patterned sheet must lie fully on the jigsaw cutting table in order to ensure that no vibrations are created.

Recommended saw blade: employ saw blades with a tooth pitch of 1.2 to max. 2.5 mm. (coarse metal saw blade / fine wood saw blade / preferably PMMA saw blades).

Drilling

All drillings must be carried out on a stable underlay.

Recommended drill: wood drill (centring tip drill), Forstner drill and hard metal drill with centring tip.

Core drills for wood can also be employed, but in this case it is essential that in the area next to the drilling the patterned sheet is attached firmly to a stable underlay.

FLAMMABILITY

SIBUGLAS products are subject to standard flammability pursuant to EN 13501-1 Class E.

LASER CUTTING

SIBUGLAS sheets can be processed using standard lasers. The cutting speed is in line with the laser wattage.

Note: Place the SIBUGLAS sheet on the laser machine in such a way that its reverse side is on the machine's extraction side. As is the case with all standard PMMA products, it is recommended that following laser cutting the material be "tempered". The high temperature of the laser causes tension in the material, which can lead to cracking. Tempering equalises these tensions.

PRINTING

SIBUGLAS AR+ products can be printed.

Owing to the many differing printing and colour systems, customers must carry out a printing test. The result will depend on the respective motif. We will be pleased to provide original samples for testing.

CLEANING / CARE

Standard household cleaners without scouring agents can be used.

DISPOSAL

Current LGA certificates exist for SIBUGLAS. We are pleased to make these available.

Private area: SIBUGLAS can be disposed of with the normal household refuse.

Commercial area: SIBUGLAS should be conducted to thermal disposal.

STORAGE INFORMATION

Always store SIBUGLAS products dry and flat, and protect them against the effects of humidity.

Wrap the sheets in plastic together with a silicate cachet and seal carefully. This prevents possible ripples along the sheet edges due to moisture in the air.

Outdoor storage is not possible

The following should be noted:

In order to prevent damage, the card underlay should be used and weighed down over its entire area. The uppermost sheet in the stack should be stored face down.

In storage, SIBUGLAS must be protected against sunlight and not come into contact with any liquids or damp.

The material should also be safeguarded against dirt, dust and mechanical damage.

TRANSPORT INFORMATION

When transporting SIBUGLAS care should be taken that the sheets are protected against dirt, UV rays, moisture and mechanical damage.

Stable, flat pallets that are larger than the sheets are to be employed with a card underlay.

The uppermost sheet must lie on the pallet with the structured face down. In addition, this top sheet should be protected by card and a slatted frame.

The edges and the sides must also be safeguarded (edge protection, PE film, ...).

The temperatures below minus 35° C or above 50° C should not be exceeded.

SIBUGLAS AR+ SA - BONDED ONTO COATED WOOD BASE SHEETS INCLUDING EDGES AND MILLING

MATERIAL REQUIREMENTS

SIBU decorative sheet:

SIBUGLAS SA dimensions: 2600 x 1000 mm, strongly adhesive

Wood base sheet:

Wood base sheet coated on both sides, dimensions: 2600 x 1000 mm

Counter-pressure:

Not required

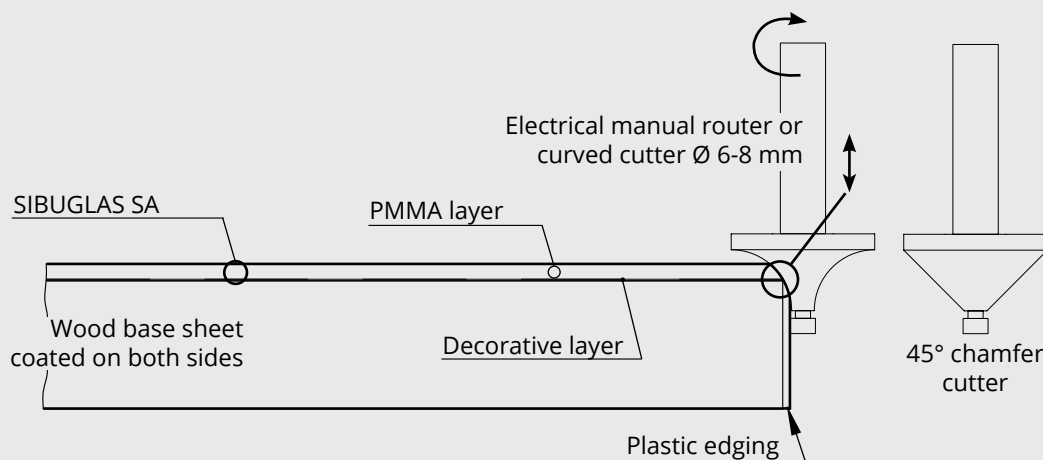
Edge material:

All standard furniture edging

PROCESSING STEPS

1. Clean the coated wood sheet.
2. Remove the protective film on the adhesive side of the SIBUGLAS sheet.
3. Bond the SIBUGLAS sheet onto the wood base sheet using a rubber roller.
4. Immediately cut the bonded sheets into the desired final dimensions (saw).
5. Place the edgings on the edge gluing machine.
6. **Using an electrical manual router, cut a rounded or chamfered edge exactly up to the point of transition from the transparent PMMA layer to the structured layer. Please see sketch!** In combination, the edge material and the transparent PMMA layer give the resultant radius or chamfer. The thicker the edge material, the wider the facet.

FACET MILLING IS THE PREREQUISITE FOR AN EDGED END PRODUCT!



SIBUGLAS AR+ PVA - GLUED AND PRESSED ON ABSORBENT WOOD BASE SHEETS

Whether on home furniture, in display windows, bars, hotels, or trade fair stands, today SIBUGLAS is used for a diversity of applications. SIBUGLAS is a multilayer sheet comprised of PMMA, PU leather, a special synthetic leather or a special paper. This multilayersheet can be bonded onto absorbent surfaces using PVA white glue. In order to ensure optimum flatness, we also deliver an accompanying, technically matching balancing sheet.

SIBUGLAS AR+ INCL. SIBUGLAS BALANCING SHEET

Both SIBUGLAS reverse sides are saturated with PVA white glue as evenly and quickly as possible using a roller. They are then laid on both sides of the absorbent wood base sheet and this composite is subsequently placed in a sheet press.

AS A RESULT, PERFECT, HIGH-GLOSS SURFACES CAN BE SIMPLY CREATED.

DESCRIPTION – STRUCTURE

SIBUGLAS decorative sheet

- PE protective film
- Scratch-resistant surface (AR+)
- Transparent PMMA layer, UV-resistant
- Decorative layer

PVA white glue

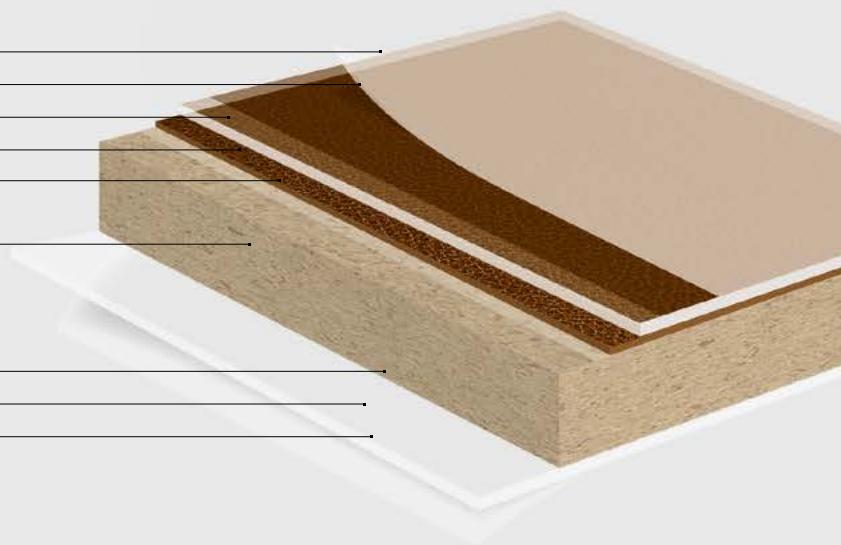
Wood base sheet

minimum thickness of 16 mm!

Use thicker wood base sheets for larger formats!

Balancing sheet

- PVA white glue
- balancing sheet
- PE protective film



SIBUGLAS decorative sheets that have been glued and pressed in this manner can be easily processed with the majority of woodworking machinery and tools with good results. The PE protective film must be left on the top surface during processing. Optimum machine parameters, tool layout and cutting speeds are to be determined individually prior to production on the basis of a sample.

BONDING INSTRUCTIONS FOR SIBUGLAS SHEETS WITH PVA WHITE GLUE

Glue application: only use flat, wood base sheets!

The acclimatised SIBUGLAS structured and balancing sheets, as well as the wood base sheet, should be laid out adjacent to one another on a straight, clean and sufficiently large work table. The cut wood base sheet must be roughly 10mm larger than the SIBUGLAS sheets. **Both SIBUGLAS sheets should first be generously coated with PVA glue using a roller.** Owing to the highly absorbent SIBUGLAS reverse side, the consumption of PVA white glue is considerable. Subsequently, both SIBUGLAS sheets are positioned as quickly as possible on the middle of the wood base sheet.

! Warning! Glue should not be applied directly to the wood base sheet, as this can have a negative effect on evenness!

Pressing:

The composite sheet is now placed in the press for approx. 30 minutes at 30° C. Do not apply excessive pressure and take into account both your know-how and the values gained from personal experience. Standard value: 20 N/cm² or 2 kg/cm².

As soon as the sheets are removed from the press, they must be stored under **stacking pressure for at least 12 hours in a FLAT position.** A genuinely even surface is extremely important for the flatness of the composite sheet!

A second possibility for small batches is to press the sheets in the machine overnight at approx. 20° C. This type of processing eliminates the need for subsequent stack pressure.

Always clean the press thoroughly prior to processing SIBUGLAS sheets!

Cutting to length/edge trimming and other processing steps:

With standard woodworking machines:

Recommendation: Fine cut saw blades

At the earliest, complete this work 12 hours after gluing/pressing!

Edging application: As usual, any standard edging can be mounted in the familiar manner!

BALANCING SHEET

A technically matching balancing sheet is required for the glued and pressed composite (surface + wood base sheet + counter-pressure) that is ideally matched to the characteristics of the materials used. This virtually rules out warping due to heat, cold or fluctuating humidity.

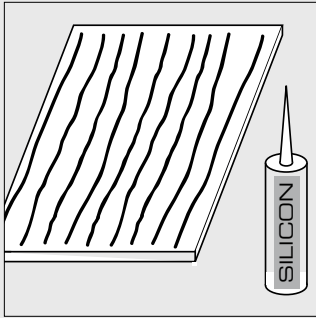
For SIBUGLAS AR+ (PMMA 2 mm) we recommend the use of the **PX Balance Sheet PMMA White 2800x1250x2** (article number: 20278) for balancing.

If the PMMA White PX balance sheet has not been pressed within six months, we recommend a check on the surface tension of the reverse side and if required, its subsequent surface treatment.

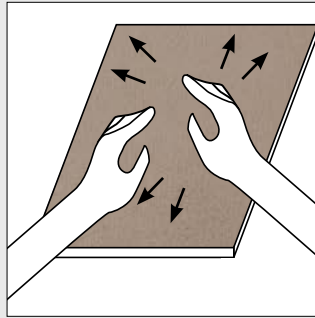
Processing ANTIGRAV

Standard processing

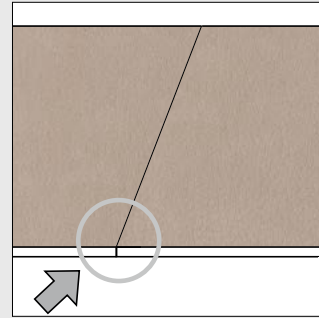
ANTIGRAV can be bonded edge to edge and therefore does not require expansion joints.
Readjustment on **any surface** is no problem when bonding with standard silicon or hybrid polymer adhesive is employed.
ANTIGRAV can be cut to size by using standard cutting-tools. Processing to be executed from the patterned side.



Apply beads of silicone vertically (1cm from the edge and with 6cm-spaces between the individual beads).



Press the sheet onto the wall and then adjust it.



Bonding is edge to edge = 0mm expansion joint

NA

non-adhesive

SA

strongly adhesive

FR

flame-retardant version
available on request

PRD

digital printing possible

PRS

screen printing possible

PR+

digital/screen printing possible

PR+*

digital/screen printing possible
Prior to printing a corona or plasma
treatment has to be carried out.
By request available in pre-treated version.

PRS*

screen printing possible
Prior to printing a corona or plasma
treatment has to be carried out.
By request available in pre-treated version.

■■■■

wet room suitability

■■■■□

limited suitability for wet rooms

AR

abrasion-resistant

AR+

scratch-resistant

+ V

entire panel length not shown
in image

SIBU | DESIGN
we decorate.

SIBU | DESIGN

we decorate.

SIBU DESIGN GmbH & Co KG

Jupiterstraße 8 / 4452 Ternberg, Austria

T. 0043 (0) 7256 / 6025-0 / **F.** 0043 (0) 7256 / 7020

info@sibu.at / www.sibu.at

